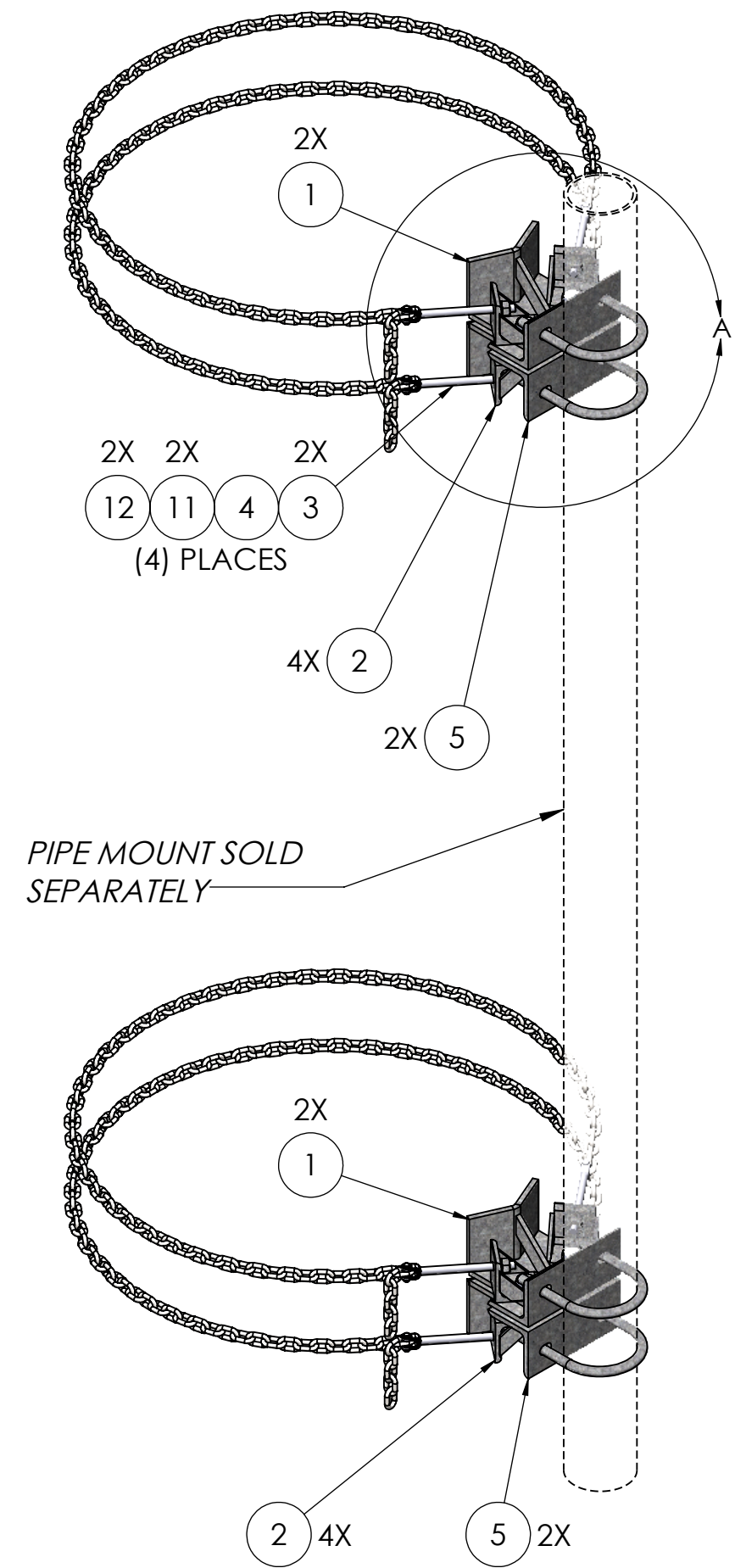
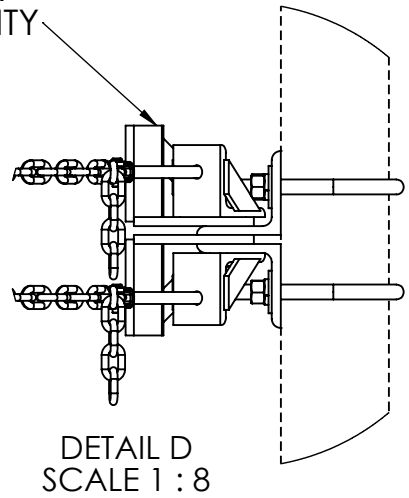


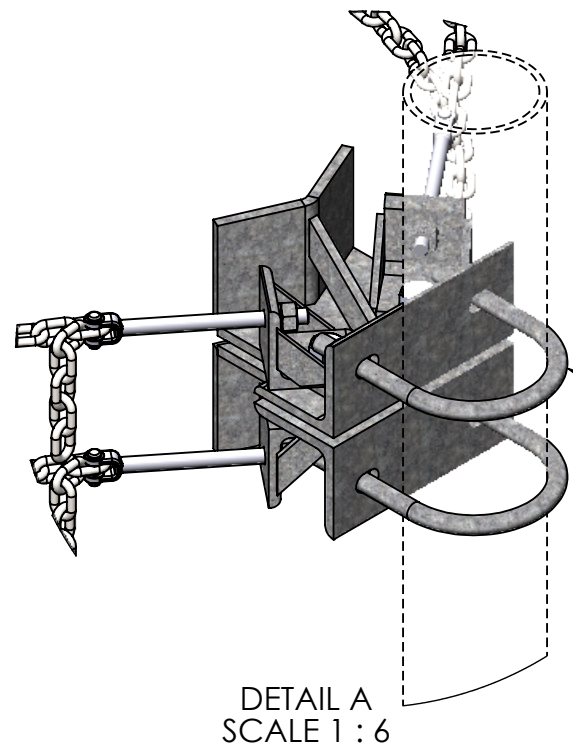
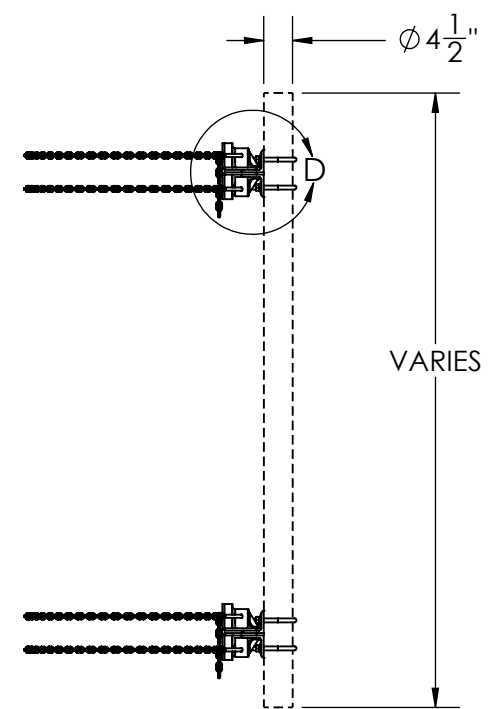
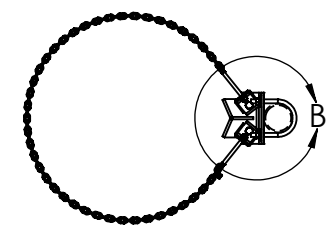
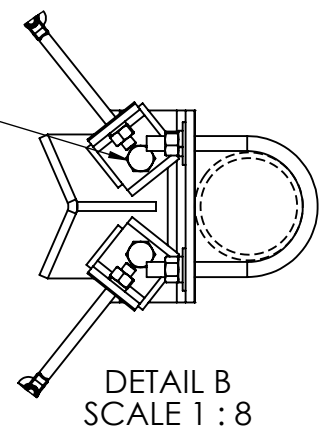
NOTES:
-FITS UP TO 32IN O.D. MONOPOLE WITH 8FT CHAIN



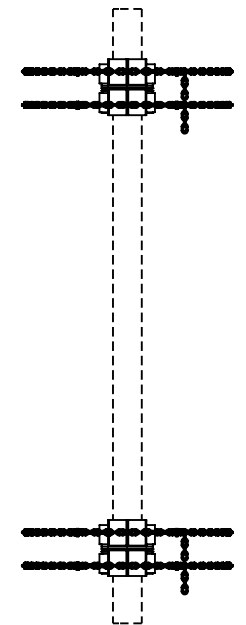
ENLARGED
FOR
CLARITY



10 9 7
(4) PLACES



2X 2X 2X
6 8 9 10
(4) PLACES



ITEM NO.	PART NUMBER	DESCRIPTION	FINISH	WEIGHT (PER)	QTY.
1	MP1300.01	CHAIN MOUNT CLAMP BRACKET (WELDMENT)	H.D.G.	5.78	4
2	MP1300.02	CHAIN MOUNT TIGHTNER BRACKET (WELDMENT)	H.D.G.	1.70	8
3	MP1300.03	1/2" x 6" TURNBUCKLE JAW END FITTING	H.D.G.	0.44	8
4	MP1300.05	1/4" G-40 CHAIN 8FT LONG	H.D.G.	5.53	4
5	MP1300.10	CHAIN MOUNT ANGLE CLIP FOR 4-1/2" O.D. PIPE	H.D.G.	5.36	4
6	GU54564	5/8" x 6-1/2" x 4-5/8" x 3" U-BOLT	H.D.G.	1.48	4
7	GB0534A	5/8" x 3-1/2" HEX BOLT (A325)	H.D.G.	0.42	4
8	GF05	5/8" FLAT WASHER	H.D.G.	0.08	8
9	GL05	5/8" LOCK WASHER	H.D.G.	0.03	12
10	GN05A	5/8" HEX NUT (2H)	H.D.G.	0.12	12
11	GL04	1/2" LOCK WASHER	H.D.G.	0.02	8
12	GN04A	1/2" HEX NUT (2H)	H.D.G.	0.04	8

		UNLESS OTHERWISE SPECIFIED: DIMENSIONS ARE IN INCHES TOLERANCE ± 1/16		DESCRIPTION: MP SINGLE SECTOR, DOUBLE CHAIN MOUNT, FITS 4-1/2" OD PIPE, NO PIPE MOUNT, FITS UP TO 32" O.D. POLE		
			PRO TOWER MANUFACTURING L.L.C. 5601 San Francisco St. NE Albuquerque, N.M. 87109 (505) 924-2810	DWG NO: MP1315		
SIZE B				DRAWN BY: AJK	DATE: 12/13/2022	REV
MATERIAL -				CHECKED BY: E.FILMER	DATE: 12/13/2022	WEIGHT: 93.92
FINISH H.D.G.				SHEET: 1 of 1	SCALE: NTS	