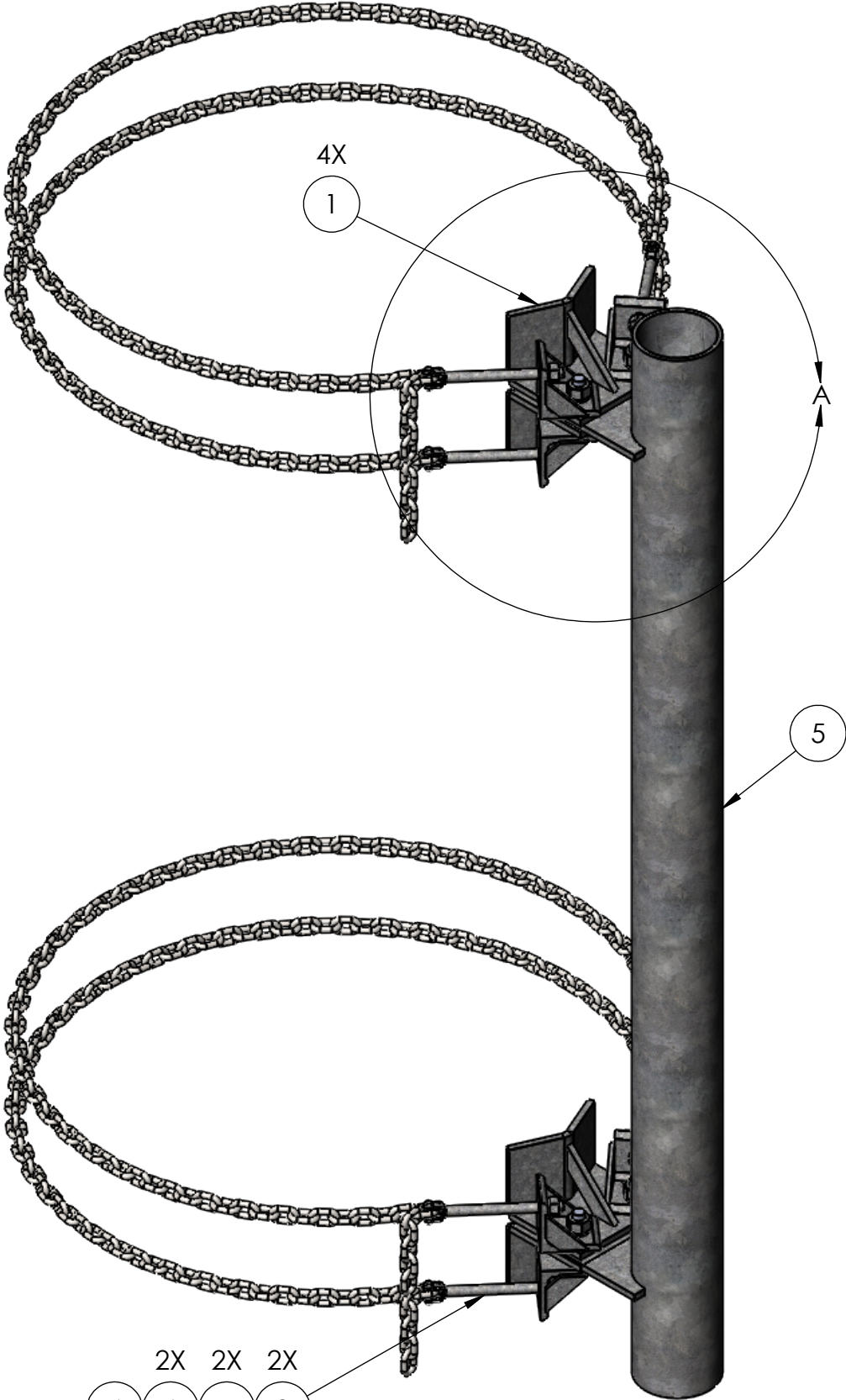
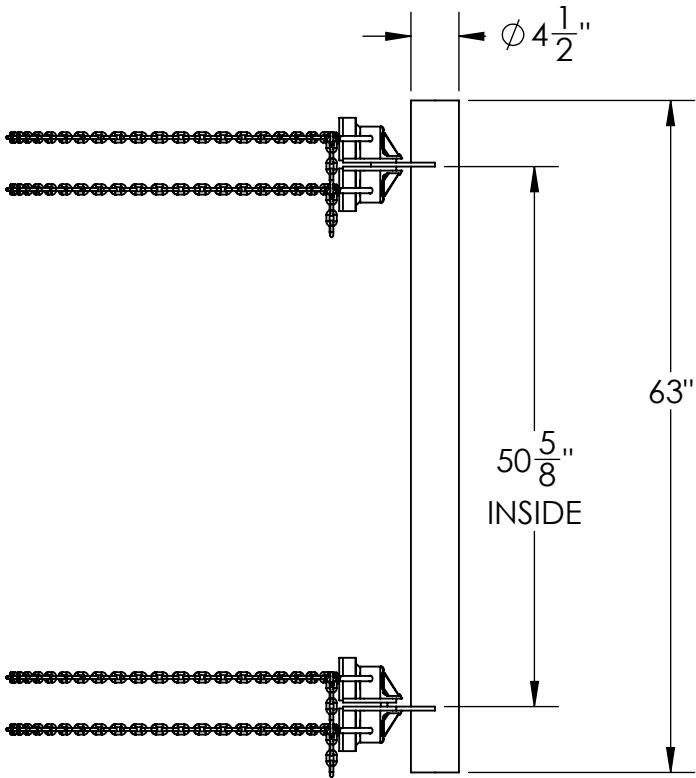
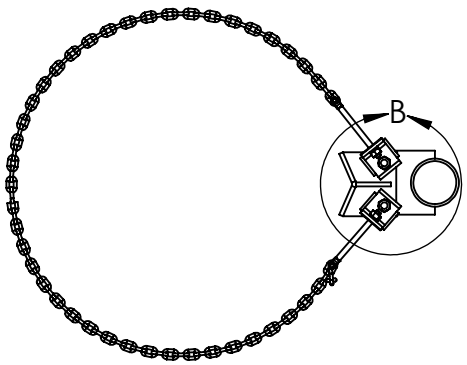
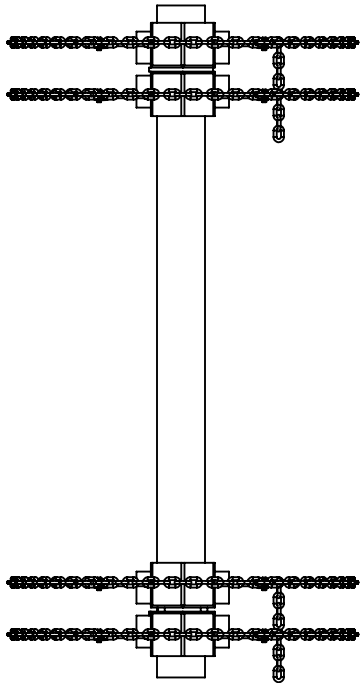
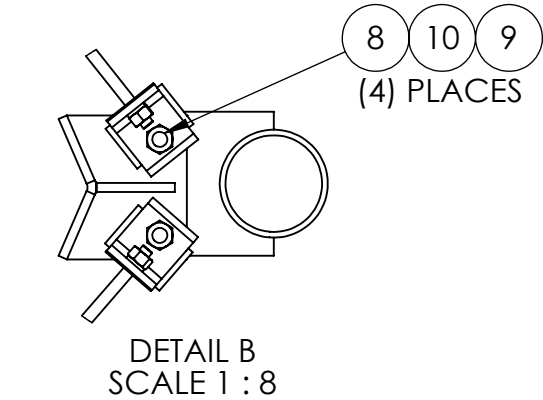
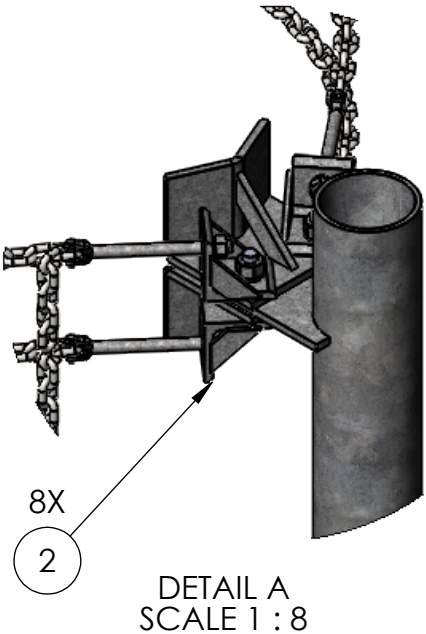


NOTES:
-FITS UP TO 32IN O.D. MONOPOLE WITH 8FT CHAIN

| ITEM NO. | PART NUMBER | DESCRIPTION | FINISH | WEIGHT (PER) | QTY. |
|----------|-------------|---|--------|--------------|------|
| 1 | MP1300.01 | CHAIN MOUNT CLAMP BRACKET (WELDMENT) | H.D.G. | 5.78 | 4 |
| 2 | MP1300.02 | CHAIN MOUNT TIGHTNER BRACKET (WELDMENT) | H.D.G. | 1.70 | 8 |
| 3 | MP1300.03 | 1/2" x 6" TURNBUCKLE JAW END FITTING | H.D.G. | 0.43 | 8 |
| 4 | MP1300.05 | 1/4" G-40 CHAIN 8FT LONG | H.D.G. | 5.53 | 4 |
| 5 | TW1210 | STRAIGHT TOWER PIPE MOUNT, 4-1/2" O.D. x 63" (WELDMENT) | H.D.G. | 63.84 | 1 |
| 6 | GL04 | 1/2" LOCK WASHER | H.D.G. | 0.02 | 8 |
| 7 | GN04A | 1/2" HEX NUT (2H) | H.D.G. | 0.06 | 8 |
| 8 | GB0530A | 5/8" x 3" HEX BOLT | H.D.G. | 0.38 | 4 |
| 9 | GL05 | 5/8" LOCK WASHER | H.D.G. | 0.03 | 4 |
| 10 | GN05A | 5/8" HEX NUT | H.D.G. | 0.12 | 4 |



2X 2X 2X
4 6 7 3
(2) PLACES UPPER
(2) PLACES LOWER



| | | | | | | |
|------------------|--|---|--|---|--|-------------------|
| | | UNLESS OTHERWISE SPECIFIED: DIMENSIONS ARE IN INCHES TOLERANCE ± 1/16 | | DESCRIPTION: MONOPOLE SINGLE SECTOR, DOUBLE CHAIN MOUNT, Ø4-1/2" x 63", FITS UP TO 32" O.D. POLE | | |
| | | PROPRIETARY AND CONFIDENTIAL THE INFORMATION CONTAINED IN THIS DRAWING IS THE SOLE PROPERTY OF PRO TOWER MANUFACTURING L.L.C. ANY REPRODUCTION IN PART OR AS A WHOLE WITHOUT THE WRITTEN PERMISSION OF PRO TOWER MANUFACTURING L.L.C. IS PROHIBITED. | |  | PRO TOWER MANUFACTURING L.L.C. 5601 San Francisco St. NE Albuquerque, N.M. 87109 (505) 924-2810 | |
| | | | | | | |
| SIZE B | | | | DWG NO: MP1310 | | |
| MATERIAL - | | | | DRAWN BY: AJK | DATE: 12/13/2022 | REV |
| FINISH H.D.G. | | | | CHECKED BY: E.FILMER | DATE: 12/13/2022 | |
| | | | | SHEET: 1 of 1 | SCALE: NTS | WEIGHT: 128.96 |