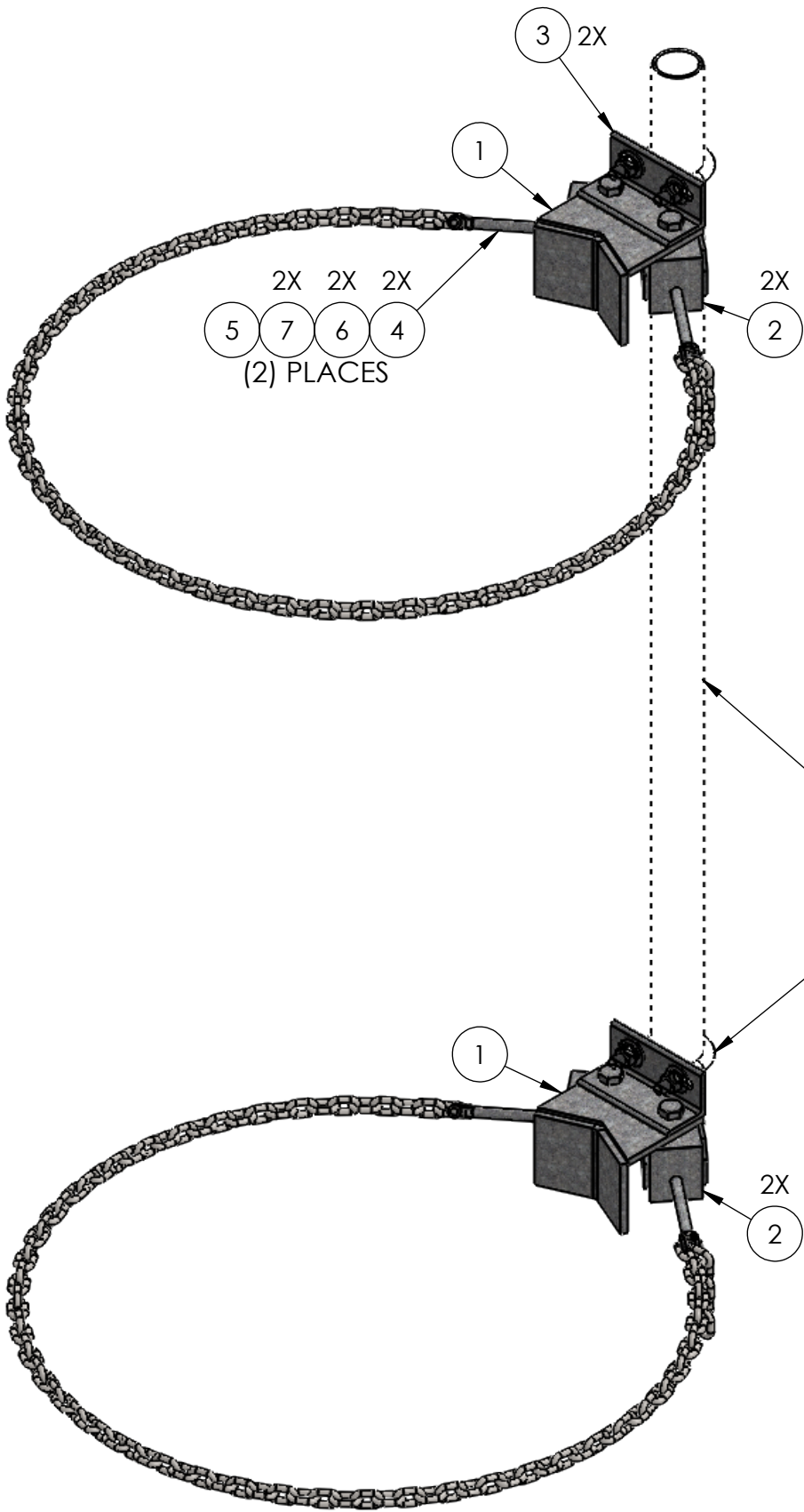


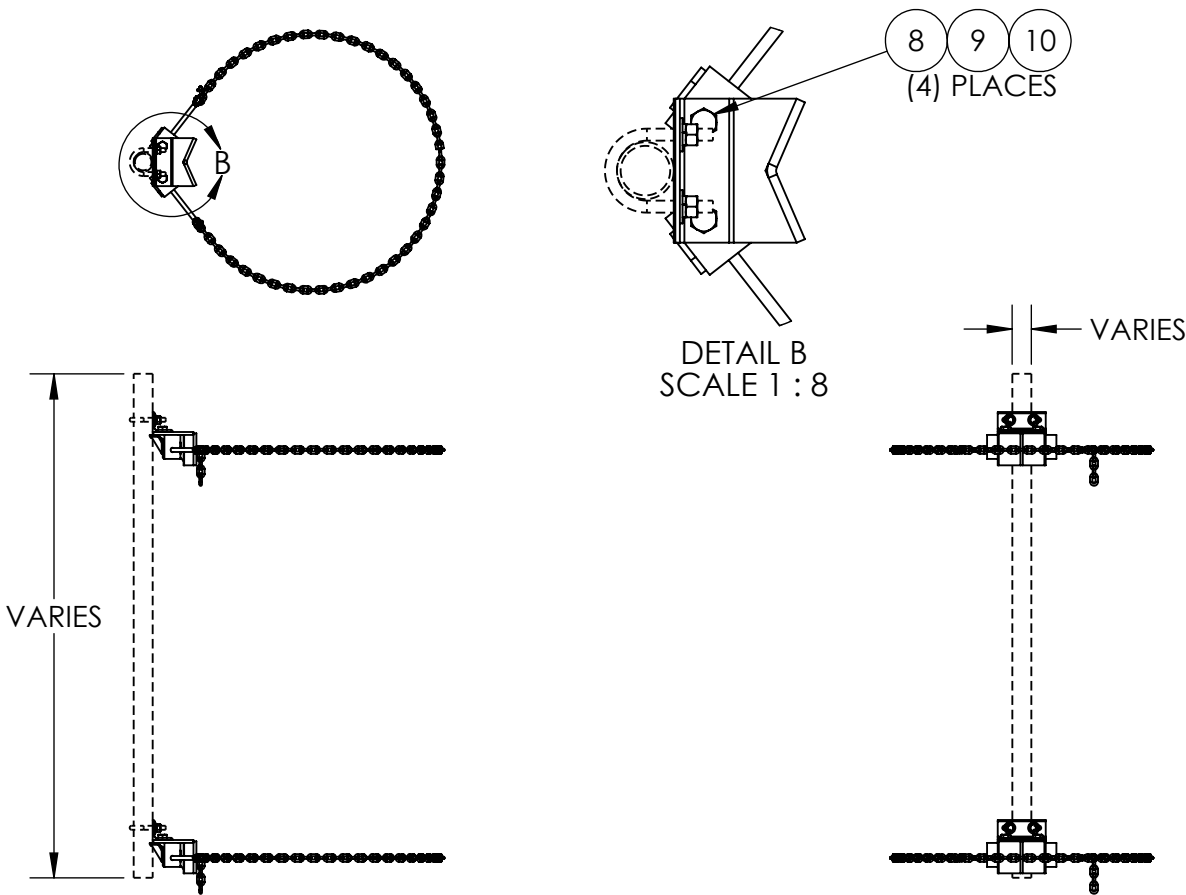
NOTES:
-FITS UP TO 32IN O.D. MONOPOLE WITH 8FT CHAIN

| ITEM NO. | PART NUMBER | DESCRIPTION | FINISH | WEIGHT (PER) | QTY. |
|----------|-------------|---|--------|--------------|------|
| 1 | MP1300.01 | CHAIN MOUNT CLAMP BRACKET (WELDMNT) | H.D.G. | 5.78 | 2 |
| 2 | MP1300.02 | CHAIN MOUNT TIGHTNER BRACKET (WELDMNT) | H.D.G. | 1.70 | 4 |
| 3 | MP1300.09 | CHAIN MOUNT ANGLE CLIP FOR 2-3/8" , 2-7/8", 3-1/2" (L2-1/2" x 2-1/2" x 1/4" x 6") | H.D.G. | 1.87 | 2 |
| 4 | MP1300.03 | 1/2" x 6" TURNBUCKLE JAW END FITTING | H.D.G. | 0.43 | 4 |
| 5 | MP1300.05 | 1/4" G-40 CHAIN 8FT LONG | H.D.G. | 5.53 | 2 |
| 6 | GL04 | 1/2" LOCK WASHER | H.D.G. | 0.02 | 4 |
| 7 | GN04A | 1/2" HEX NUT (2H) | H.D.G. | 0.06 | 4 |
| 8 | GB0522A | 5/8" x 2-1/4" HEX BOLT | H.D.G. | 0.31 | 4 |
| 9 | GL05 | 5/8" LOCK WASHER | H.D.G. | 0.03 | 4 |
| 10 | GN05A | 5/8" HEX NUT (2H) | H.D.G. | 0.12 | 4 |



| U-BOLT ASSEMBLIES (SOLD SEPARATELY) | | | |
|-------------------------------------|--|-----------|--------|
| PART NUMBER | DESCRIPTION | PIPE O.D. | FINISH |
| GUA42440 | 1/2" X 4" X 2-1/2" X 2" U-BOLT ASSM. | Ø2-3/8" | H.D.G. |
| GUA43045 | 1/2" X 4-1/2" X 3" X 2" U-BOLT ASSM. | Ø2-7/8" | H.D.G. |
| GUA43550 | 1/2" X 5" X 3-5/8" X 2-1/2" U-BOLT ASSM. | Ø3-1/2" | H.D.G. |

CUSTOMER MUST SPECIFY
PIPE DIAMETER & LENGTH.
HARDWARE WILL BE INCLUDED.
(ORDER SEPERATELY)



| | | | | | | | |
|---------------|--|---|--|---|----------------------|------------------|---------------|
| | | UNLESS OTHERWISE SPECIFIED: DIMENSIONS ARE IN INCHES TOLERANCE ± 1/16 | | DESCRIPTION: MP SINGLE SECTOR CHAIN MOUNT, FITS 2-3/8", 2-7/8", 3-1/2", NO PIPE MOUNT, FITS UP TO 32" O.D. POLE | | | |
| | | PROPRIETARY AND CONFIDENTIAL THE INFORMATION CONTAINED IN THIS DRAWING IS THE SOLE PROPERTY OF PRO TOWER MANUFACTURING L.L.C. ANY REPRODUCTION IN PART OR AS A WHOLE WITHOUT THE WRITTEN PERMISSION OF PRO TOWER MANUFACTURING L.L.C. IS PROHIBITED. | |  | DWG NO: MP1306 | | |
| MATERIAL - | | | | | DRAWN BY: AJK | DATE: 12/13/2022 | REV |
| FINISH H.D.G. | | | | | CHECKED BY: E.FILMER | DATE: 12/13/2022 | |
| | | | | | | | SHEET: 1 of 1 |