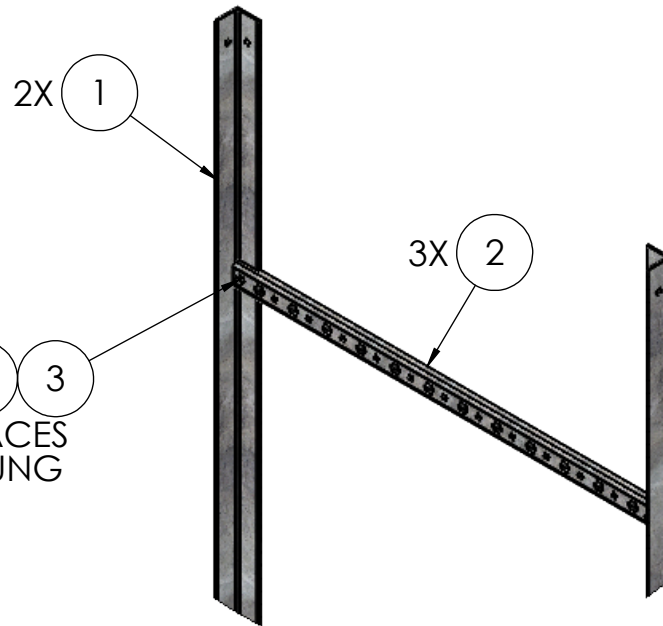


J-CLIP ATTACHMENT KITS SOLD SEPARATELY
PART NO. CS1050

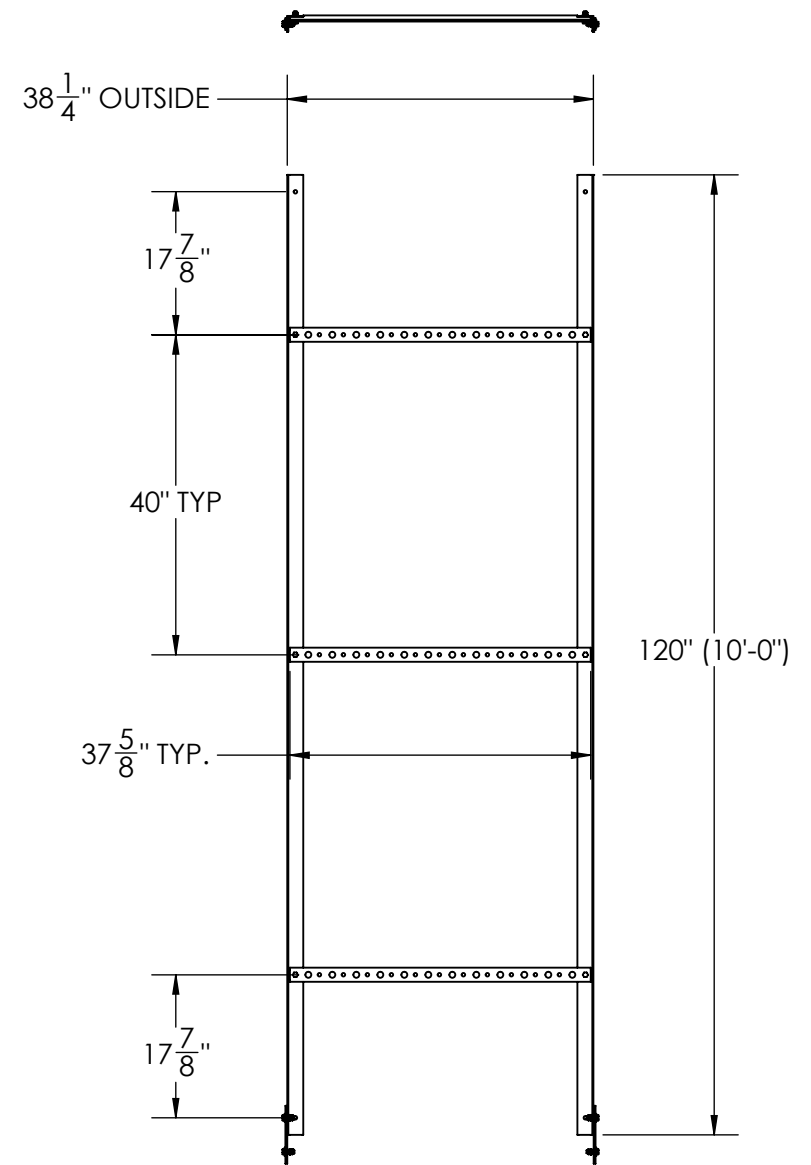
6 2X

3 4 5 7
(4) PLACES



5 4 3
(2) PLACES
PER RUNG

DETAIL A
SCALE 1 : 12



ITEM NO.	PART NUMBER	DESCRIPTION	FINISH	WEIGHT (PER)	QTY.
1	CS1010.01	10' CABLE LADDER RAIL (L2" x 2" x 1/8")	H.D.G.	16.52	2
2	CS3055.02	37-1/2" 12-HOLE CABLE LADDER RUNG	H.D.G.	3.37	3
3	GB03125	3/8" x 1-1/4" HEX BOLT	H.D.G.	0.06	10
4	GL03	3/8" LOCK WASHER	H.D.G.	0.01	10
5	GN03	3/8" HEX NUT	H.D.G.	0.02	10
6	CS1060.01	CABLE LADDER SPLICE PLATE (1/4" PLATE)	H.D.G.	0.65	2
7	GF03	3/8" FLAT WASHER	H.D.G.	0.02	4

MATERIAL
FINISH

-
H.D.G.

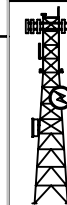
SIZE
B

UNLESS OTHERWISE SPECIFIED:
DIMENSIONS ARE IN INCHES
TOLERANCE $\pm 1/16$

PROPRIETARY AND CONFIDENTIAL
THE INFORMATION CONTAINED IN THIS
DRAWING IS THE SOLE PROPERTY OF
PRO TOWER MANUFACTURING L.L.C. ANY
REPRODUCTION IN PART OR AS A WHOLE
WITHOUT THE WRITTEN PERMISSION OF
PRO TOWER MANUFACTURING L.L.C. IS
PROHIBITED.

DESCRIPTION:

10' CABLE LADDER, 12 RUN, J-CLIP SOLD SEPARATELY



**PRO TOWER
MANUFACTURING
L.L.C.**
5601 San Francisco St. NE
Albuquerque, N.M. 87109
(505) 924-2810

DWG NO:

CS1020

DRAWN BY:
AJK
CHECKED BY:
E.FILMER
SHEET: 1 of 1

DATE: 9/21/2022
DATE: 9/21/2022
SCALE: NTS

REV
WEIGHT:
45.36