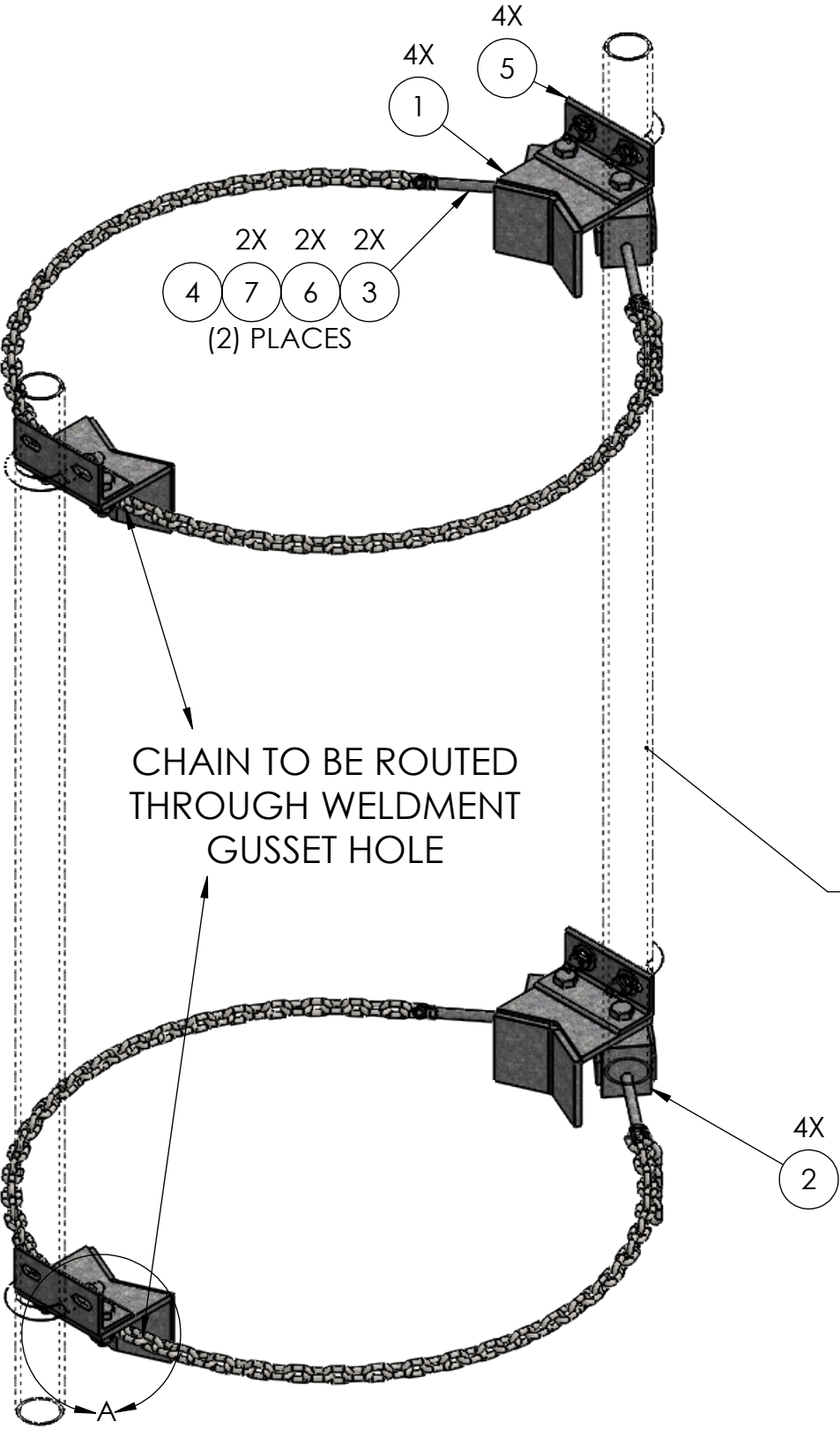


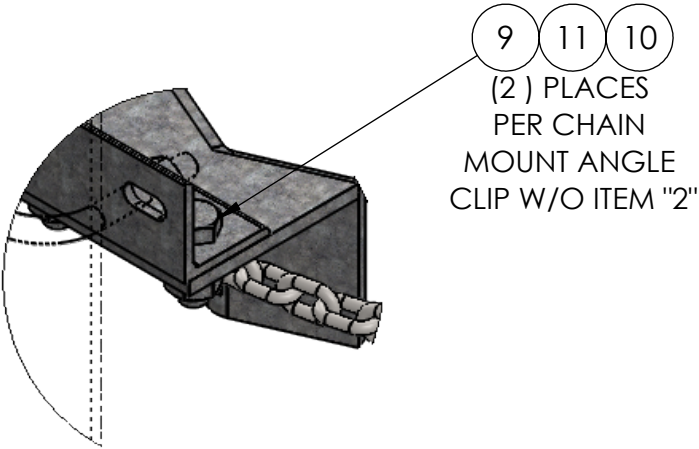
NOTES:
-FITS UP TO 32IN O.D. MONOPOLE WITH 8FT CHAIN



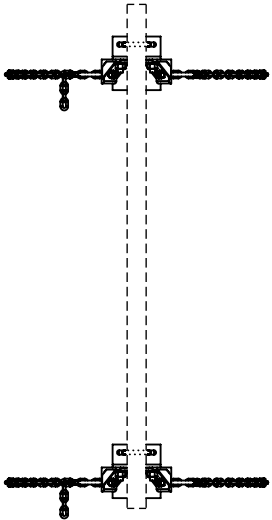
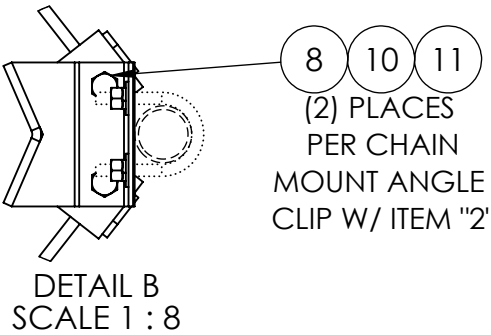
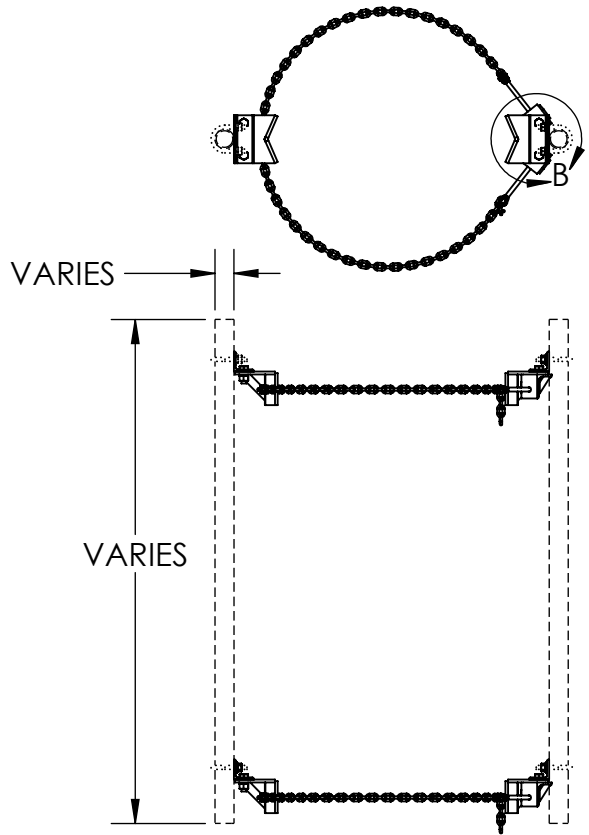
ITEM NO.	PART NUMBER	DESCRIPTION	FINISH	WEIGHT (PER)	QTY.
1	MP1300.01	CHAIN MOUNT CLAMP BRACKET (WELDMENT)	H.D.G.	5.78	4
2	MP1300.02	CHAIN MOUNT TIGHTNER BRACKET (WELDMENT)	H.D.G.	1.70	4
3	MP1300.03	1/2" x 6" TURNBUCKLE JAW END FITTING	H.D.G.	0.43	4
4	MP1300.05	1/4" G-40 CHAIN 8FT LONG	H.D.G.	5.53	2
5	MP1300.09	CHAIN MOUNT ANGLE CLIP FOR 2-3/8" , 2-7/8" , 3-1/2" (L2-1/2" x 2-1/2" x 1/4" x 6")	H.D.G.	1.87	4
6	GL04	1/2" LOCK WASHER	H.D.G.	0.02	4
7	GN04A	1/2" HEX NUT (2H)	H.D.G.	0.06	4
8	GB0522A	5/8" x 2-1/4" HEX BOLT	H.D.G.	0.31	4
9	GB0516A	5/8" x 1-3/4" HEX BOLT	H.D.G.	0.26	4
10	GL05	5/8" LOCK WASHER	H.D.G.	0.03	8
11	GN05A	5/8" HEX NUT (2H)	H.D.G.	0.12	8

U-BOLT ASSEMBLIES (SOLD SEPARATELY)			
PART NUMBER	DESCRIPTION	PIPE O.D.	FINISH
GUA42440	1/2" x 4" x 2-1/2" x 2" U-BOLT ASSM.	Ø2-3/8"	H.D.G.
GUA43045	1/2" x 4-1/2" x 3" x 2" U-BOLT ASSM.	Ø2-7/8"	H.D.G.
GUA43550	1/2" x 5" x 3-5/8" x 2" U-BOLT ASSM.	Ø3-1/2"	H.D.G.

CUSTOMER MUST SPECIFY
PIPE DIAMETER & LENGTH.
HARDWARE WILL BE INCLUDED.
(ORDER SEPERATELY)



DETAIL A
SCALE 1 : 4



		SIZE B	UNLESS OTHERWISE SPECIFIED: DIMENSIONS ARE IN INCHES TOLERANCE ± 1/16		DESCRIPTION: MP DOUBLE SECTOR, CHAIN MOUNT FITS 2-3/8", 2-7/8", 3-1/2", NO PIPE MOUNTS, FITS UP TO 32" O.D. POLE			
			PROPRIETARY AND CONFIDENTIAL THE INFORMATION CONTAINED IN THIS DRAWING IS THE SOLE PROPERTY OF PRO TOWER MANUFACTURING L.L.C. ANY REPRODUCTION IN PART OR AS A WHOLE WITHOUT THE WRITTEN PERMISSION OF PRO TOWER MANUFACTURING L.L.C. IS PROHIBITED.			PRO TOWER MANUFACTURING L.L.C. 5601 San Francisco St. NE Albuquerque, N.M. 87109 (505) 924-2810		DWG NO: MP1307
DRAWN BY: A.J.K.		DATE: 12/14/2022						REV
CHECKED BY: E.FILMER		DATE: 12/14/2022						
MATERIAL -		FINISH H.D.G.						