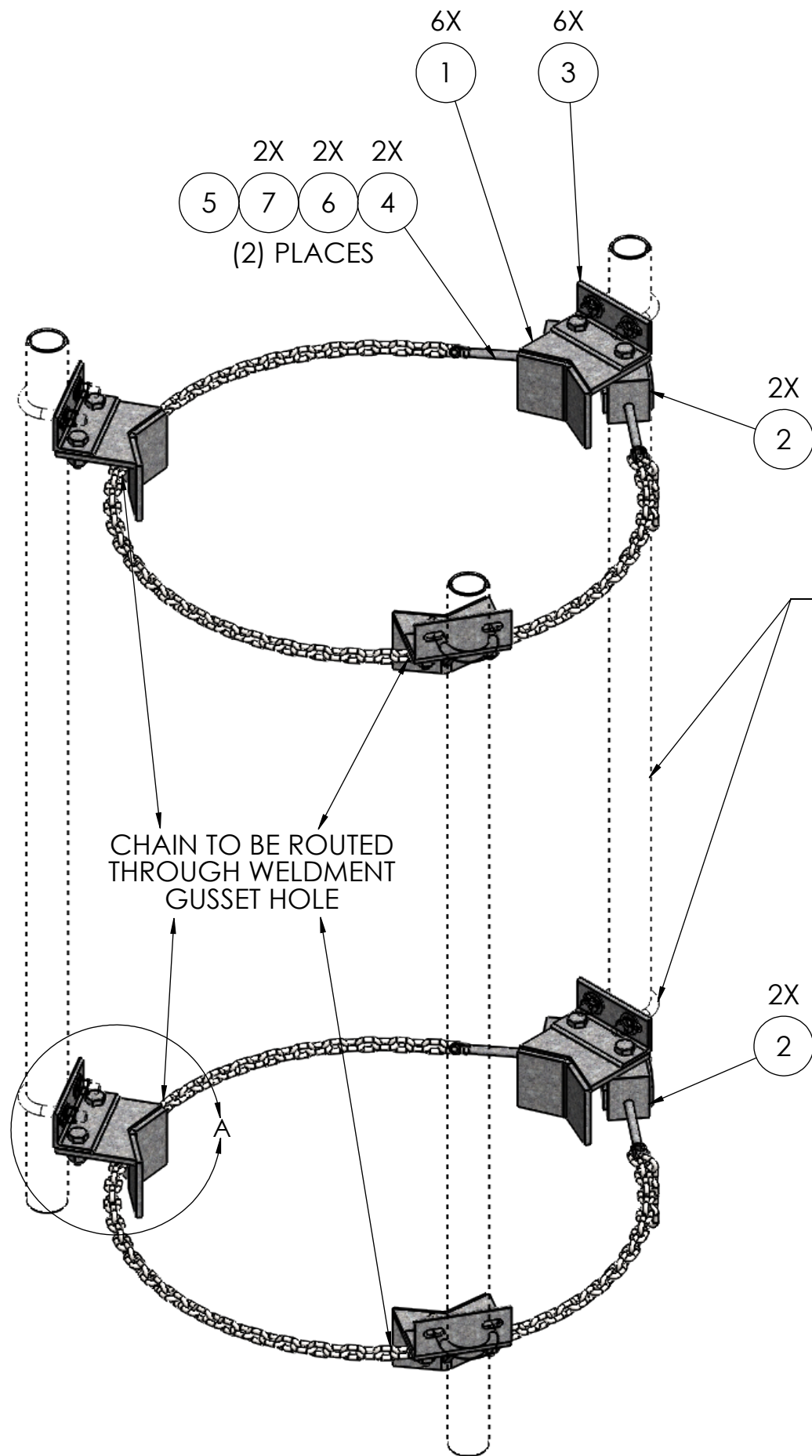
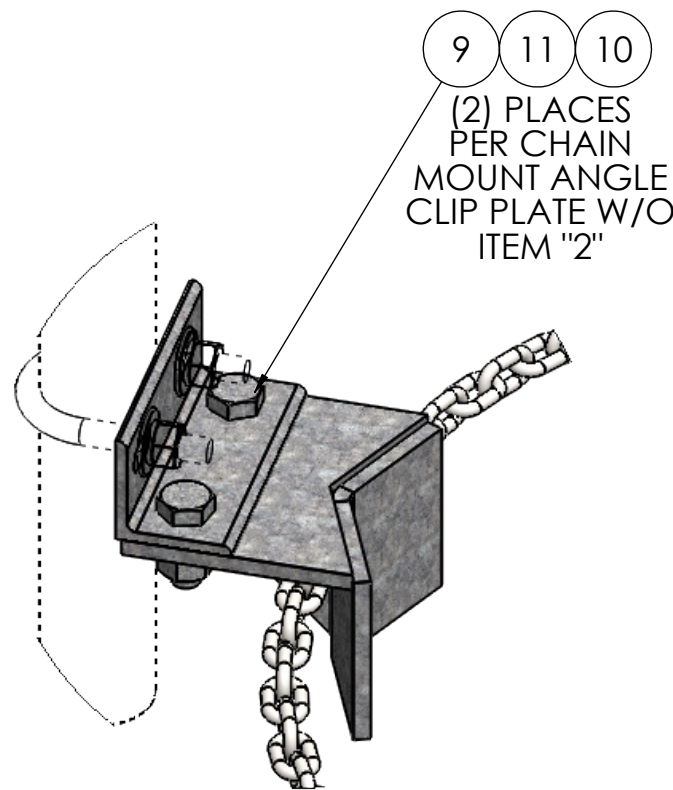


NOTES:
-FITS UP TO 32IN O.D. MONOPOLE WITH 8FT CHAIN



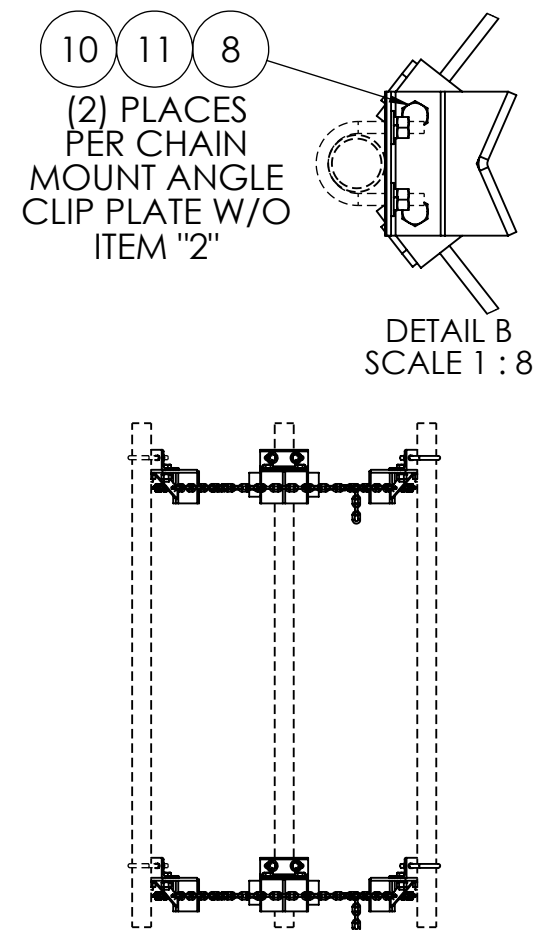
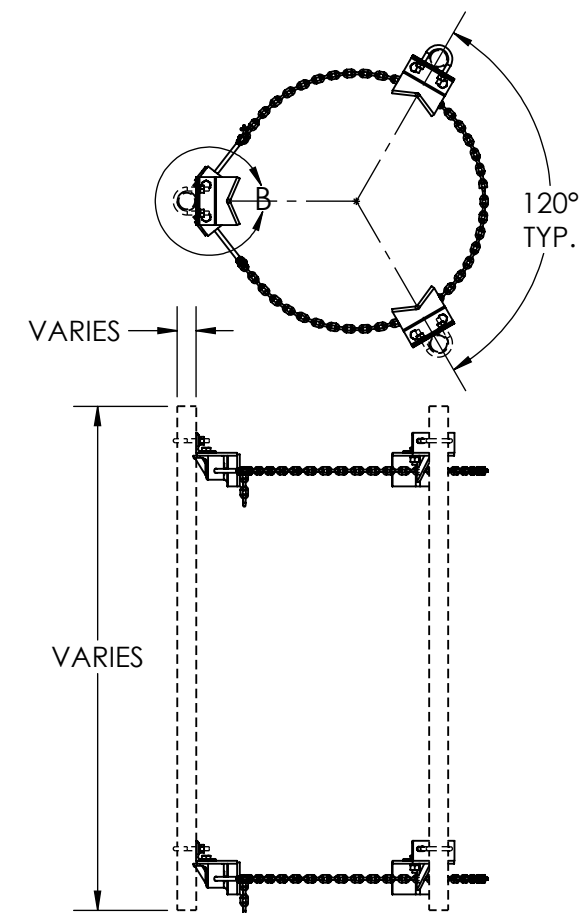
*-CUSTOMER MUST SPECIFY
PIPE DIAMETER & LENGTH.
HARDWARE WILL BE INCLUDED.
(ORDER SEPERATELY)*



DETAIL A
SCALE 1 : 4

ITEM NO.	PART NUMBER	DESCRIPTION	FINISH	WEIGHT (PER)	QTY.
1	MP1300.01	CHAIN MOUNT CLAMP BRACKET (WELDMENT)	H.D.G.	5.78	6
2	MP1300.02	CHAIN MOUNT TIGHTNER BRACKET (WELDMENT)	H.D.G.	1.70	4
3	MP1300.09	CHAIN MOUNT ANGLE CLIP FOR 2-3/8" , 2.7/8", 3-1/2" (L2-1/2" x 2-1/2" x 1/4" x 6")	H.D.G.	1.87	6
4	MP1300.03	1/2" x 6" TURNBUCKLE JAW END FITTING	H.D.G.	0.43	4
5	MP1300.05	1/4" G-40 CHAIN 8FT LONG	H.D.G.	6.33	2
6	GL04	1/2" LOCK WASHER	H.D.G.	0.02	4
7	GN04A	1/2" HEX NUT (2H)	H.D.G.	0.06	4
8	GB0522A	5/8" x 2-1/4" HEX BOLT	H.D.G.	0.31	4
9	GB0516A	5/8" x 1-3/4" HEX BOLT	H.D.G.	0.26	8
10	GL05	5/8" LOCK WASHER	H.D.G.	0.03	12
11	GN05A	5/8" HEX NUT (2H)	H.D.G.	0.12	12

U-BOLT ASSEMBLIES (SOLD SEPARATELY)			
PART NUMBER	DESCRIPTION	PIPE ϕ	FINISH
GUA42440	1/2" X 4" X 2-1/2" X 2" U-BOLT ASSM.	ϕ 2-3/8"	H.D.G.
GUA43045	1/2" X 4-1/2" X 3" X 2" U-BOLT ASSM.	ϕ 2-7/8"	H.D.G.
GUA43550	1/2" X 5" X 3-5/8" X 2" U-BOLT ASSM.	ϕ 3-1/2"	H.D.G.



<div>SIZE</div> <div>B</div>		UNLESS OTHERWISE SPECIFIED:	DESCRIPTION:				
		DIMENSIONS ARE IN INCHES TOLERANCE ± 1/16	MP TRIPLE SECTOR, CHAIN MOUNT FITS 2-3/8", 2-7/8", 3-1/2", NO PIPE MOUNTS, FITS UP TO 32" O.D. POLE				
MATERIAL		PROPRIETARY AND CONFIDENTIAL THE INFORMATION CONTAINED IN THIS DRAWING IS THE SOLE PROPERTY OF PRO TOWER MANUFACTURING L.L.C.. ANY REPRODUCTION IN PART OR AS A WHOLE WITHOUT THE WRITTEN PERMISSION OF PRO TOWER MANUFACTURING L.L.C. IS PROHIBITED.		PRO TOWER MANUFACTURING L.L.C. 5601 San Francisco St. NE Albuquerque, N.M. 87109 (505) 924-2810	DWG NO:		
FINISH					MP1326		
H.D.G.					DRAWN BY:	DATE:	REV
		-	AJK	12/14/2022			
			CHECKED BY:	DATE:			
			E.FILMER	12/14/2022	WEIGHT:		
			SHEET:	SCALE:			
			1 of 1	NTS	72.50		