

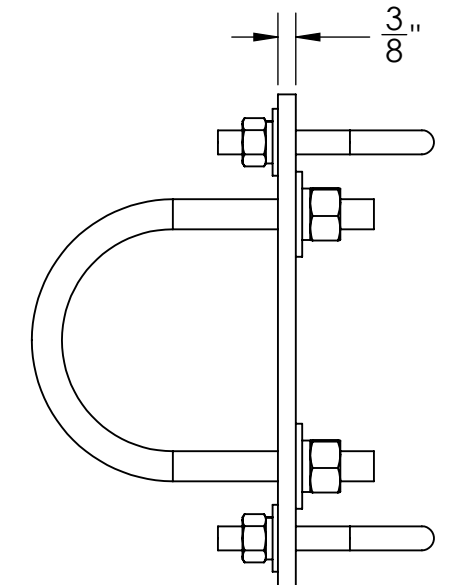
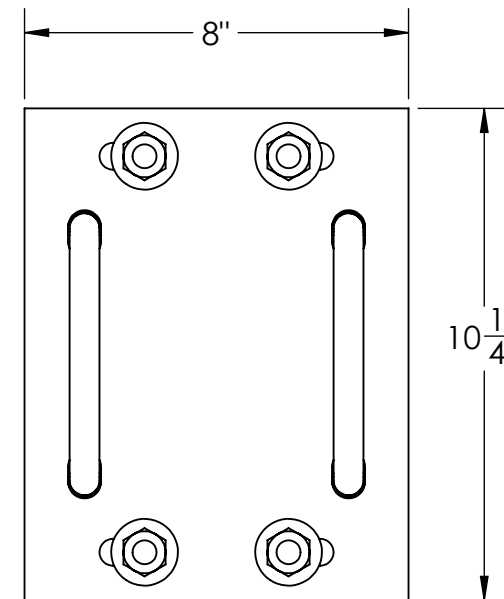
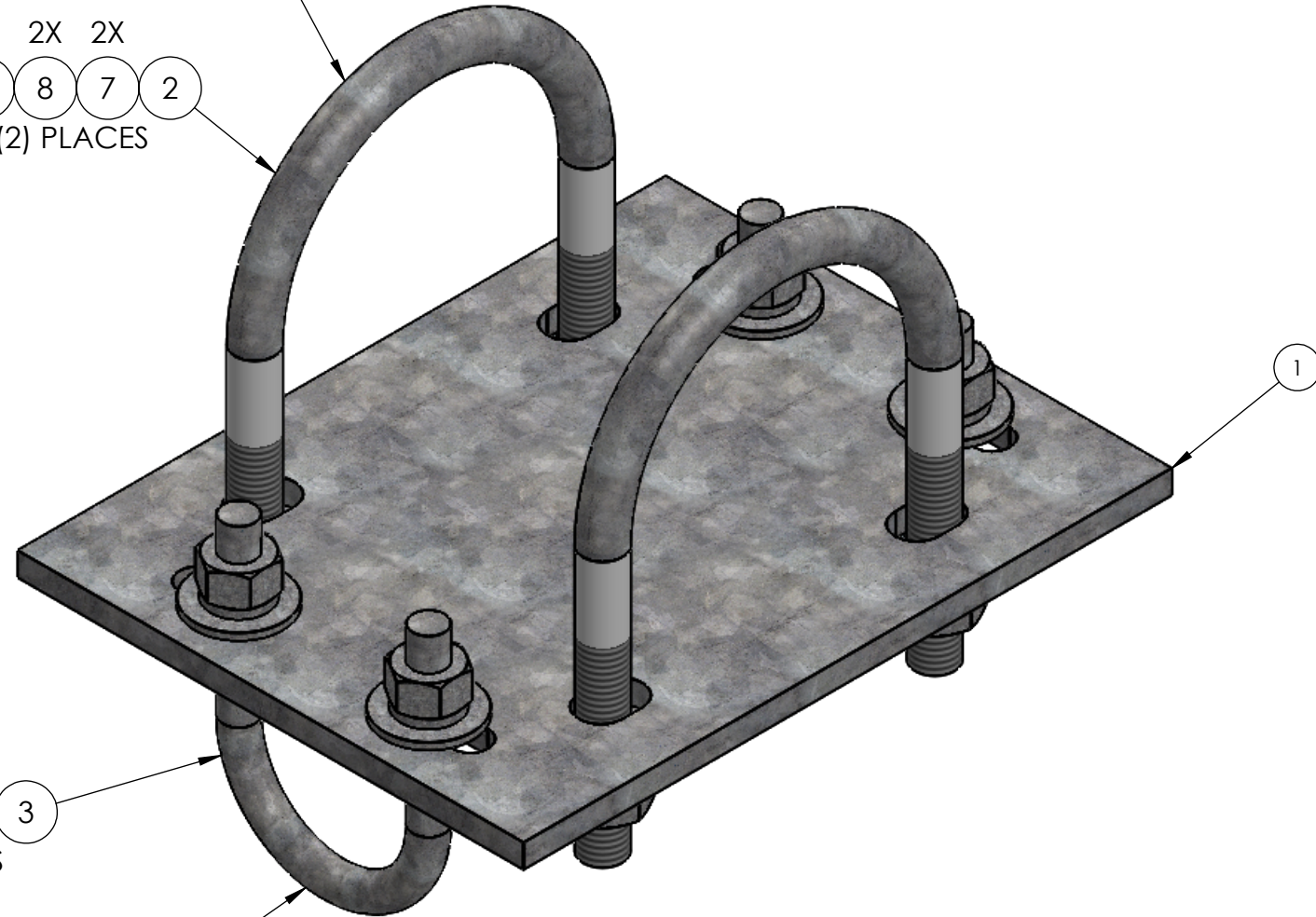
ITEM NO.	PART NUMBER	DESCRIPTION	FINISH	WEIGHT (PER)	QTY.
1	TW1107	LARGE CROSSOVER PLATE (3/8" PLATE)	H.D.G.	8.22	1
2	GU54564	5/8" x 6-1/2" x 4-5/8" x 3" U-BOLT	H.D.G.	1.45	2
3	GU42440	1/2" x 4" x 2-1/2" x 2" U-BOLT	H.D.G.	0.57	2
4	GN04A	1/2" HEX NUT (2H)	H.D.G.	0.06	4
5	GL04	1/2" LOCK WASHER	H.D.G.	0.02	4
6	GF04	1/2" FLAT WASHER	H.D.G.	0.04	4
7	GN05A	5/8" HEX NUT	H.D.G.	0.12	4
8	GL05	5/8" LOCK WASHER	H.D.G.	0.03	4
9	GF05	5/8" FLAT WASHER	H.D.G.	0.08	4

FITS 4-1/2" O.D. PIPE

2X 2X 2X
 9 8 7 2
 (2) PLACES

2X 2X 2X
 6 5 4 3
 (2) PLACES

FITS 2-3/8" O.D. PIPE



MATERIAL -	FINISH H.D.G.	SIZE B	UNLESS OTHERWISE SPECIFIED: DIMENSIONS ARE IN INCHES TOLERANCE ± 1/16	DESCRIPTION: LARGE CROSSOVER PLATE KIT, 2-3/8" O.D. TO 4-1/2" O.D. PIPE	DWG NO: TW1108
			PROPRIETARY AND CONFIDENTIAL THE INFORMATION CONTAINED IN THIS DRAWING IS THE SOLE PROPERTY OF PRO TOWER MANUFACTURING L.L.C. ANY REPRODUCTION IN PART OR AS A WHOLE WITHOUT THE WRITTEN PERMISSION OF PRO TOWER MANUFACTURING L.L.C. IS PROHIBITED.	 PRO TOWER MANUFACTURING L.L.C. 5601 San Francisco St. NE Albuquerque, N.M. 87109 (505) 924-2810	DRAWN BY: A.J.K. CHECKED BY: E.FILMER SHEET: 1 of 1