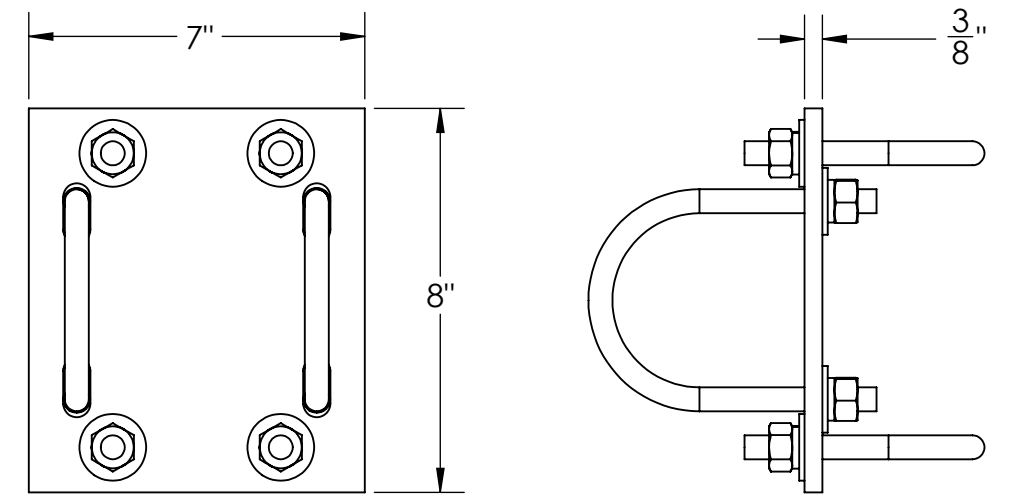
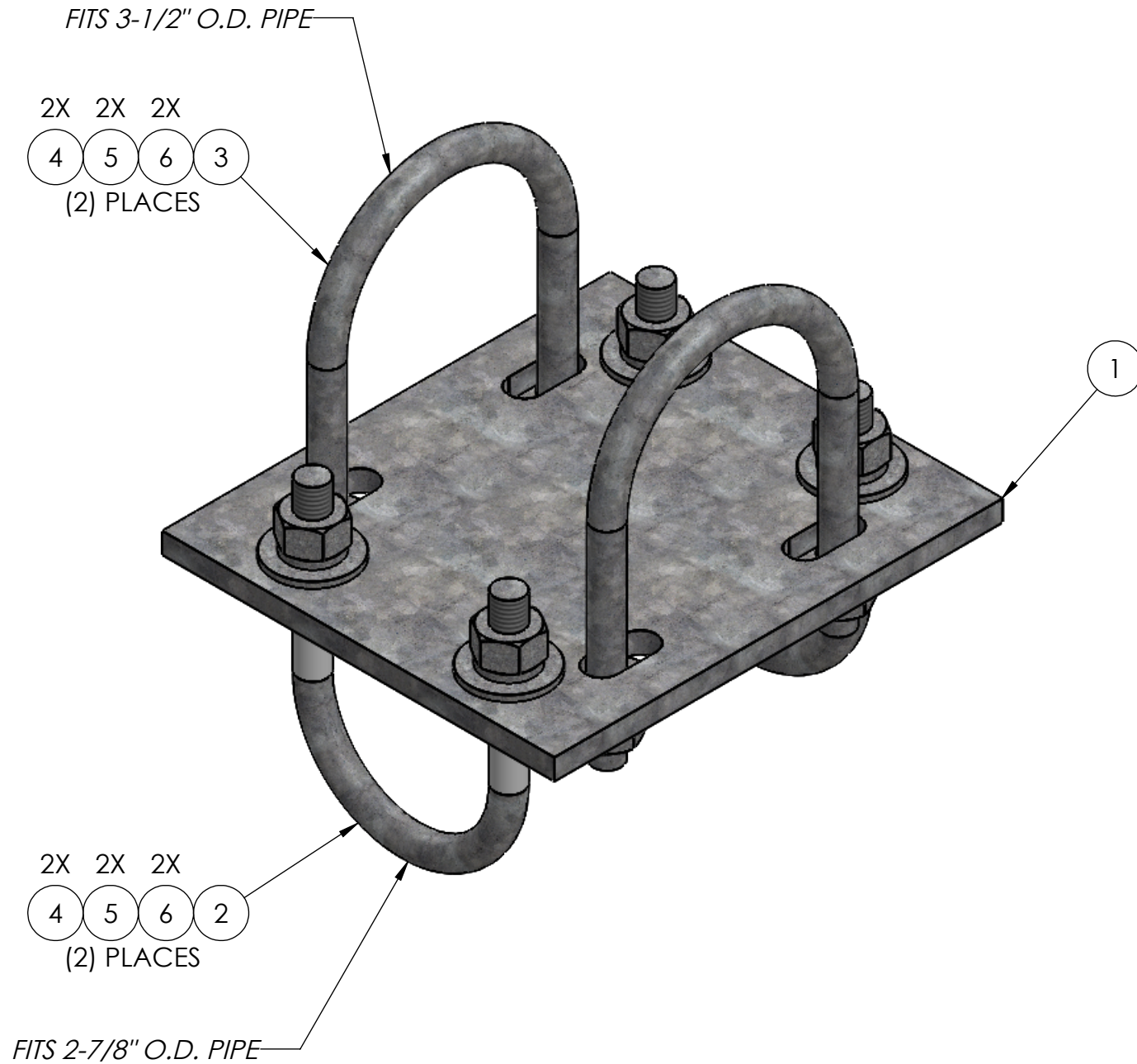


ITEM NO.	PART NUMBER	DESCRIPTION	FINISH	WEIGHT (PER)	QTY.
1	TW1100	MEDIUM CROSSOVER PLATE (3/8" PLATE)	H.D.G.	5.43	1
2	GU43045	1/2" x 4-1/2" x 3" x 2" U-BOLT	H.D.G.	0.64	2
3	GU43550	1/2" x 5-1/2" x 3-5/8" x 2-1/2" U-BOLT	H.D.G.	0.77	2
4	GF04	1/2" FLAT WASHER	H.D.G.	0.04	8
5	GL04	1/2" LOCK WASHER	H.D.G.	0.02	8
6	GN04A	1/2" HEX NUT	H.D.G.	0.06	8



MATERIAL -	FINISH H.D.G.	SIZE B	UNLESS OTHERWISE SPECIFIED: DIMENSIONS ARE IN INCHES TOLERANCE ± 1/16	DESCRIPTION: MEDIUM CROSSOVER PLATE KIT, 2-7/8" TO 3-1/2" PIPE		
			PROPRIETARY AND CONFIDENTIAL THE INFORMATION CONTAINED IN THIS DRAWING IS THE SOLE PROPERTY OF PRO TOWER MANUFACTURING L.L.C. ANY REPRODUCTION IN PART OR AS A WHOLE WITHOUT THE WRITTEN PERMISSION OF PRO TOWER MANUFACTURING L.L.C. IS PROHIBITED.	 PRO TOWER MANUFACTURING L.L.C. 5601 San Francisco St. NE Albuquerque, N.M. 87109 (505) 924-2810	DWG NO: TW1105	
			CHECKED BY: E.FILMER		DATE: 7/6/2021	WEIGHT: 9.22
			SHEET: 1 of 1	SCALE: NTS		