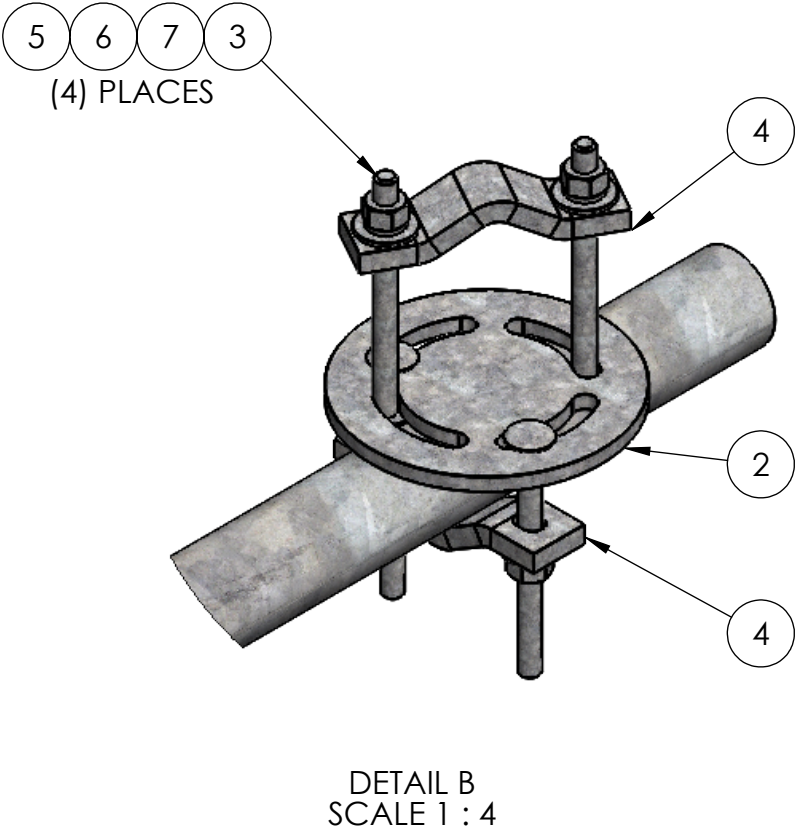
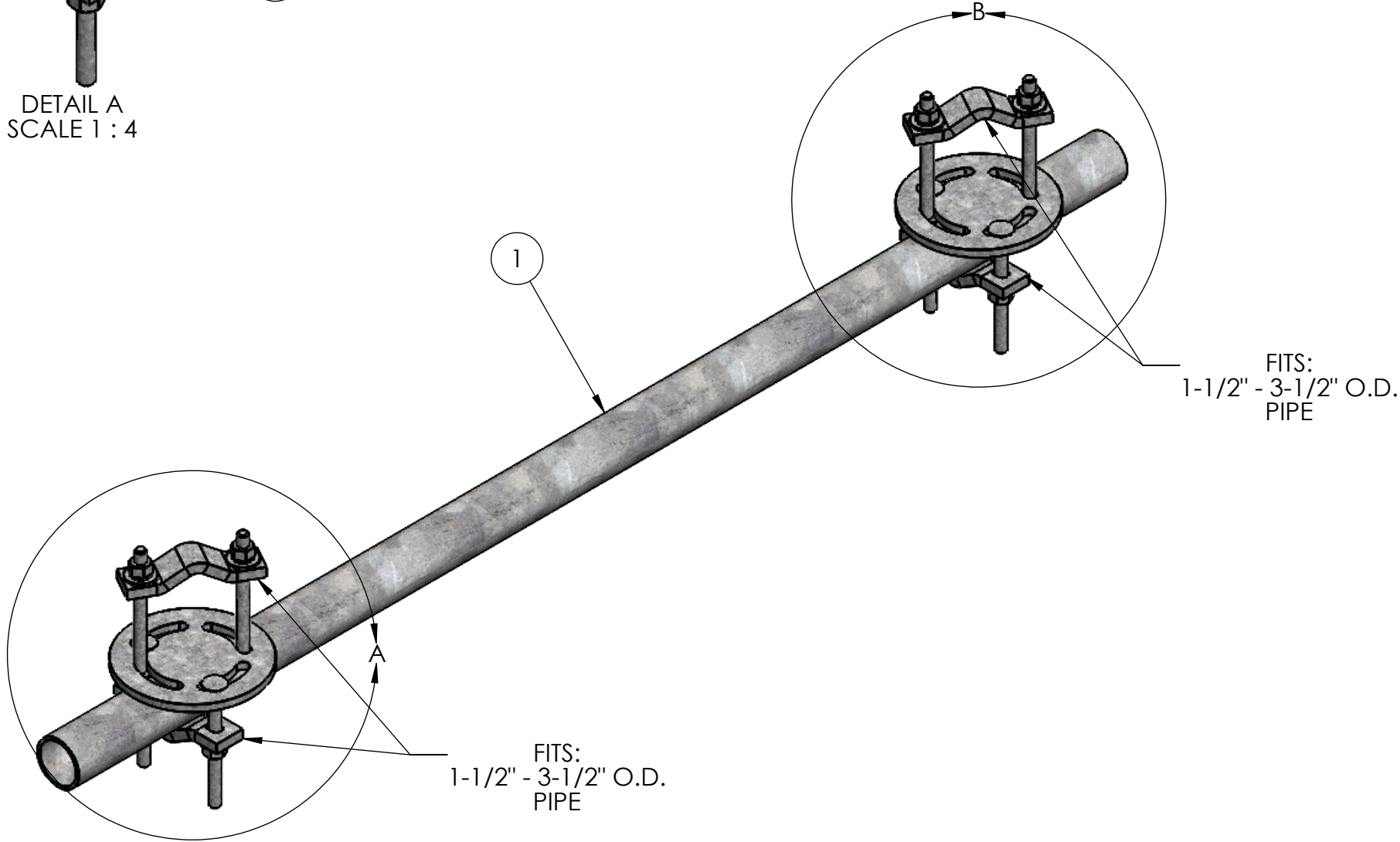
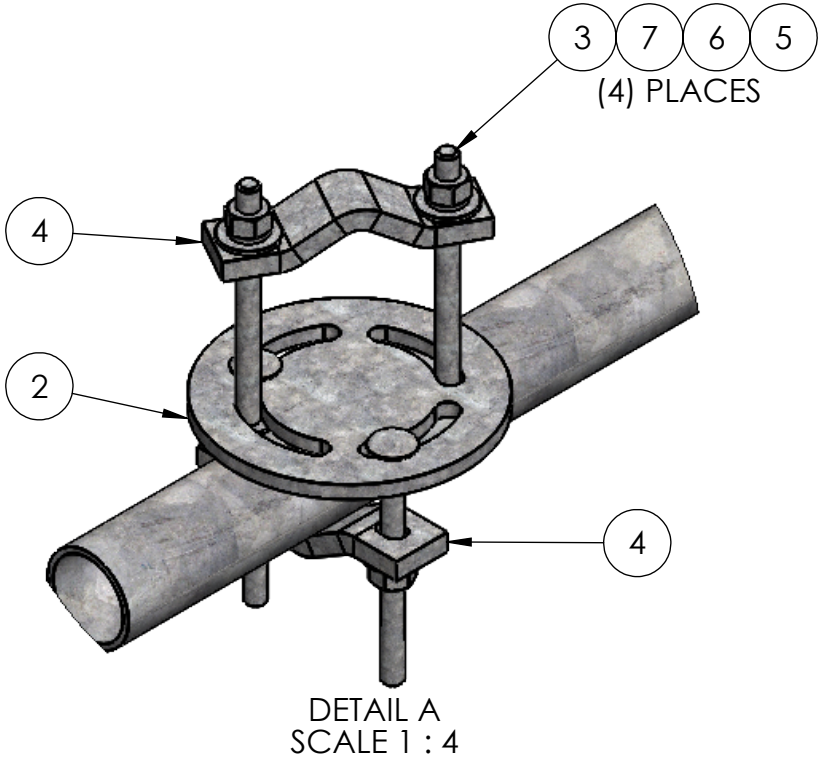



ITEM NO.	PART NUMBER	DESCRIPTION	FINISH	WEIGHT (PER)	QTY.
1	GP2375.060	PLAIN END GALV PIPE 2-3/8" O.D. x 60"	H.D.G.	18.33	1
2	TW1112.01	ROUND PLATE FOR 1" TO 3-1/2" OD CLAMP ASSEMBLY	H.D.G.	3.18	2
3	GBC0506	1/2" X 6" CARRIAGE BOLT	H.D.G.	0.39	8
4	TW1320.01	CLAMP HALF 1-1/2" TO 3-1/2" OD ROUND (1/2" PLATE)	H.D.G.	1.23	4
5	GF04	1/2" FLAT WASHER	H.D.G.	0.04	8
6	GL04	1/2" LOCK WASHER	H.D.G.	0.02	8
7	GN04A	1/2" HEX NUT	H.D.G.	0.06	8



		UNLESS OTHERWISE SPECIFIED: DIMENSIONS ARE IN INCHES TOLERANCE ± 1/16		DESCRIPTION: PIPE CORNER SUPPORT KIT, FITS 1-1/2" - 3-1/2" PIPE				
		PROPRIETARY AND CONFIDENTIAL THE INFORMATION CONTAINED IN THIS DRAWING IS THE SOLE PROPERTY OF PRO TOWER MANUFACTURING L.L.C. ANY REPRODUCTION IN PART OR AS A WHOLE WITHOUT THE WRITTEN PERMISSION OF PRO TOWER MANUFACTURING L.L.C. IS PROHIBITED.			<b>PRO TOWER MANUFACTURING L.L.C.</b> <b>5601 San Francisco St. NE Albuquerque, N.M. 87109 (505) 924-2810</b>		DWG NO: MP3510	
SIZE <b>B</b>								
MATERIAL -								
FINISH H.D.G.								
						DRAWN BY: AJK	DATE: 6/13/2022	REV
						CHECKED BY: E. FILMER	DATE: 6/13/2022	
						SHEET: 1 of 1	SCALE: NTS	