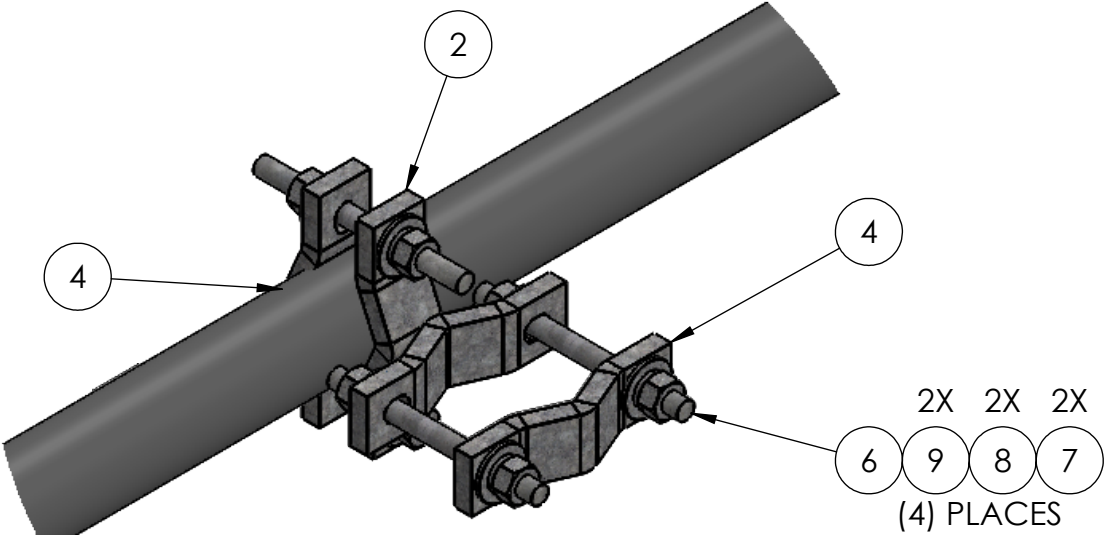
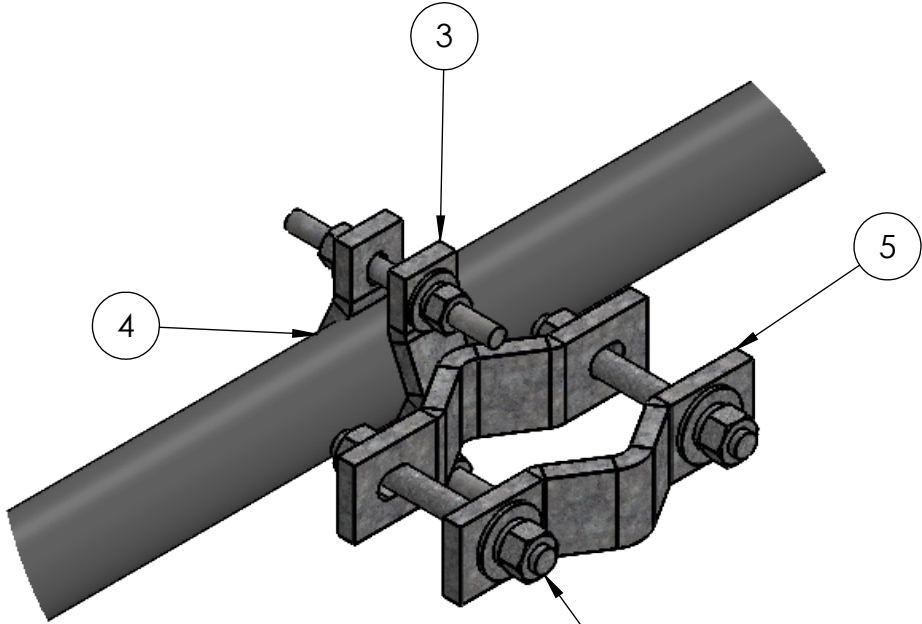
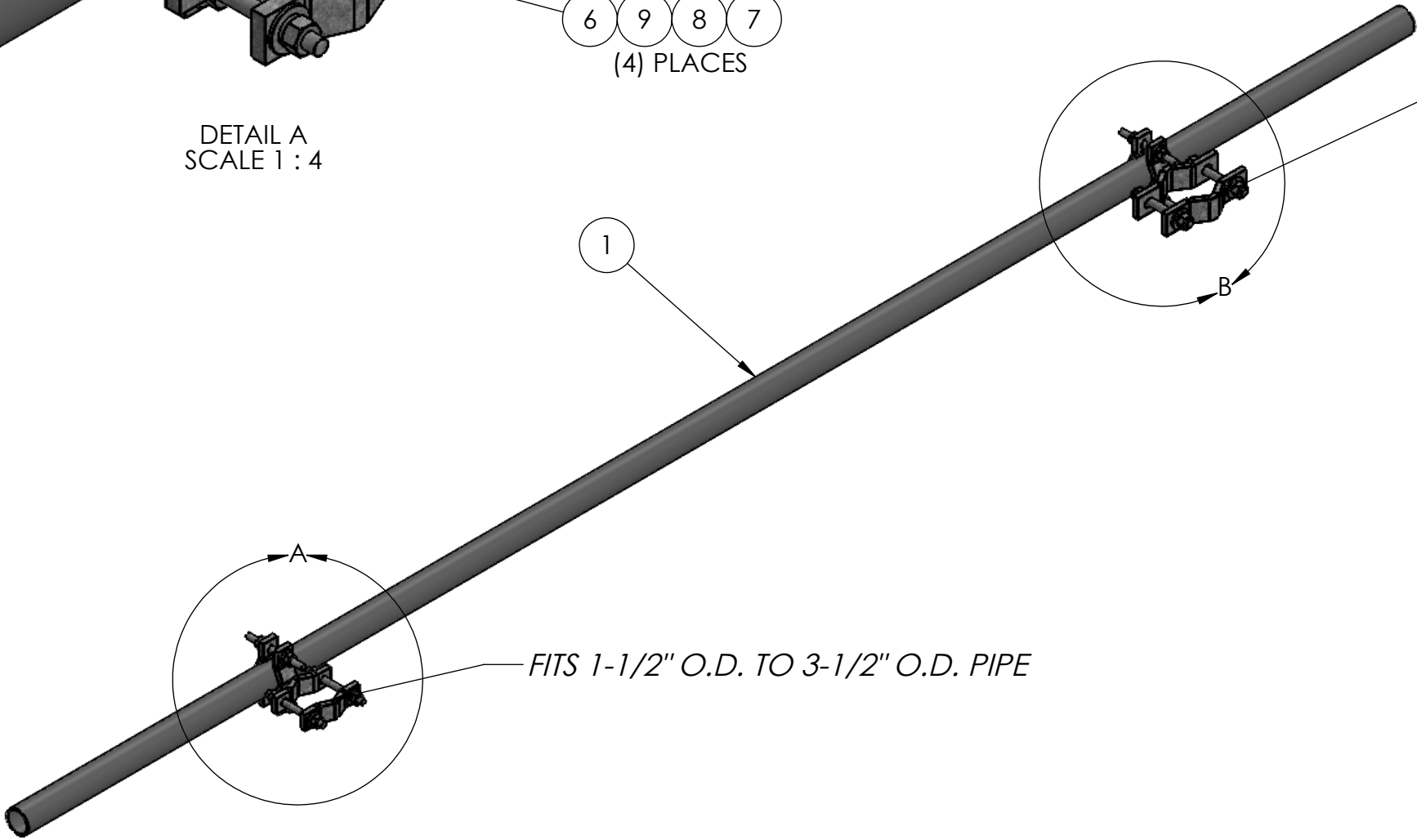


REVISIONS			
REV.	DESCRIPTION	DATE	APPROVED
A	Ø1/2" THREADED ROD FOR 2-3/8" TO 4" O.D. CLAMPS HAVE BEEN REPLACED WITH Ø5/8" THREADED ROD	07/12/2021	E. FILMER

ITEM NO.	PART NUMBER	DESCRIPTION	FINISH	WEIGHT (PER)	QTY.
1	GP2375.150	PLAIN END GALV PIPE, 2-3/8" O.D. x 150" (12'-6")	H.D.G.	45.83	1
2	TW1315.01	CROSS OVER CLAMP BRACKET, SM TO SM (WELDMENT)	H.D.G.	2.46	1
3	TW1316.01	SMALL TO MEDIUM CROSSOVER BRACKET	H.D.G.	3.64	1
4	TW1320.01	CLAMP HALF 1-1/2" TO 3-1/2" OD ROUND (1/2" PLATE)	H.D.G.	1.20	3
5	TW1321.01	CLAMP HALF 2-3/8" TO 5-9/16" O.D. ROUND (1/2" PLATE)	H.D.G.	2.44	1
6	GR500.006	1/2" X 6" THREADED ROD	H.D.G.	0.33	6
7	GF04	1/2" FLAT WASHER	H.D.G.	0.04	12
8	GL04	1/2" LOCK WASHER	H.D.G.	0.02	12
9	GN04A	1/2" HEX NUT (2H)	H.D.G.	0.06	12
10	GR625.006	5/8" X 6" THREADED ROD	H.D.G.	0.52	2
11	GF05	5/8" FLAT WASHER	H.D.G.	0.08	4
12	GL05	5/8" LOCK WASHER	H.D.G.	0.03	4
13	GN05A	5/8" HEX NUT (2H)	H.D.G.	0.12	4



DETAIL A  
SCALE 1 : 4



DETAIL B  
SCALE 1 : 4

<div>UNLESS OTHERWISE SPECIFIED: DIMENSIONS ARE IN INCHES TOLERANCE ± 1/16</div>		DESCRIPTION: UNIV. STIFF ARM KIT, 2-3/8" O.D. X 12'-6" 1-1/2" TO 3-1/2" O.D. - 2-3/8" TO 4" O.D.				
		<div><div>PRO TOWER MANUFACTURING L.L.C. 5601 San Francisco St. NE Albuquerque, N.M. 87109 (505) 924-2810</div></div>	DWG NO: SA1333.150			
<div>OLD P.N.: TW1333.150</div> <div>FINISH H.D.G.</div>	<div>SIZE B</div>		DRAWN BY: AJK		DATE: 5/13/2022	REV A
			CHECKED BY: E. FILMER		DATE: 5/13/2022	WEIGHT: 63.41
			SHEET: 1 of 1	SCALE: NTS		