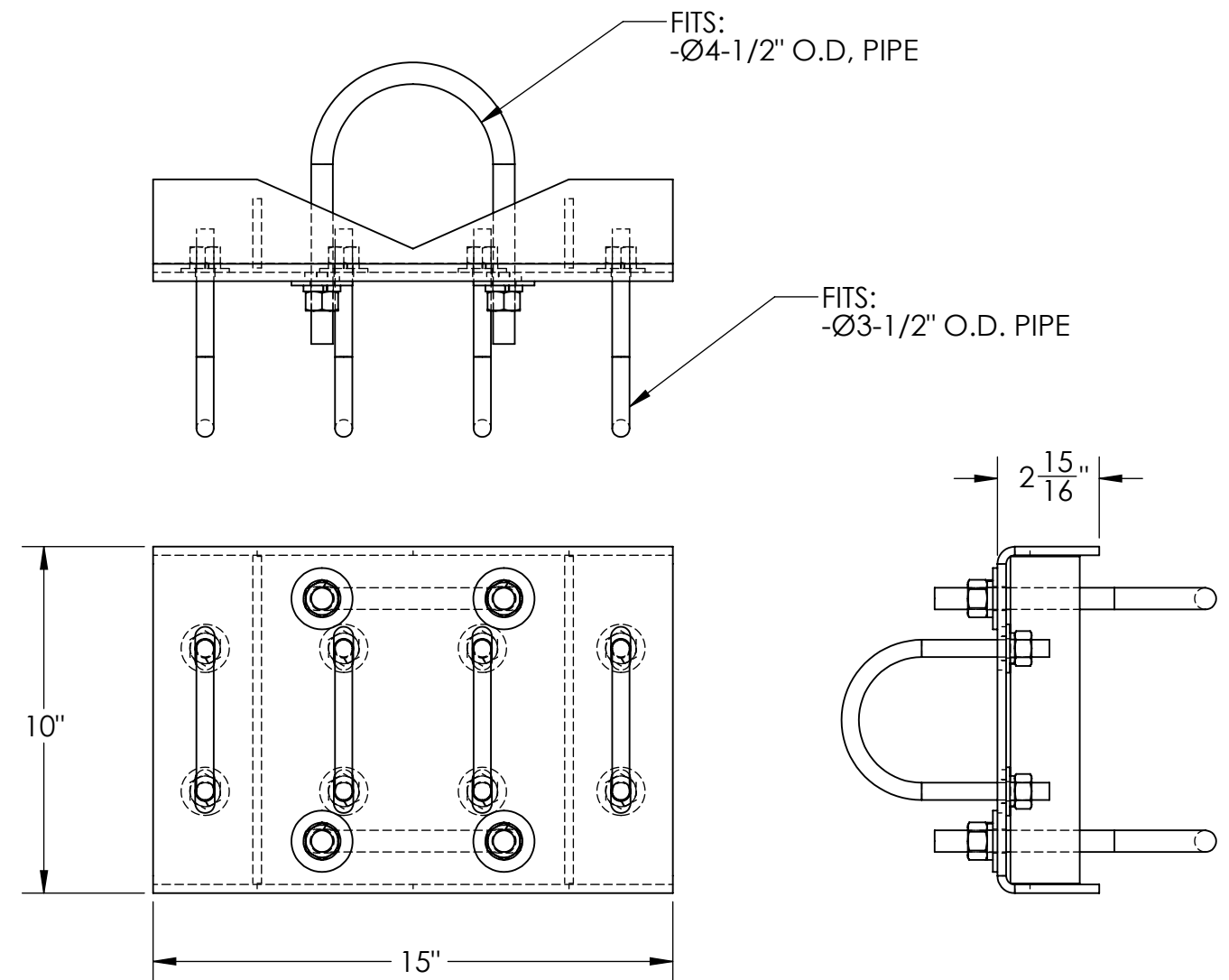
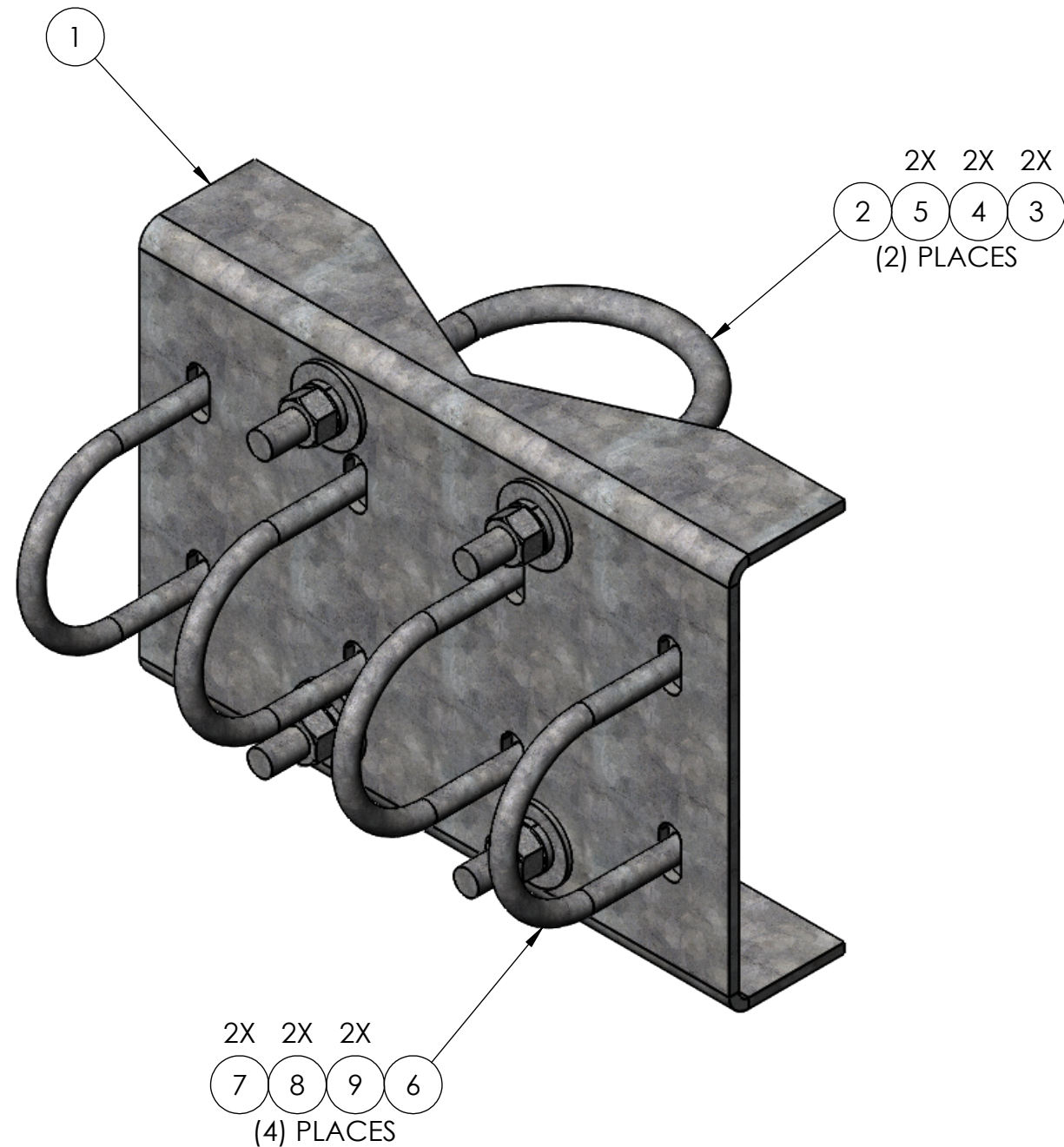


ITEM NO.	PART NUMBER	DESCRIPTION	FINISH	WEIGHT (PER)	QTY.
1	MP1186.01	15" CENTER CHANNEL BRACKET (WELDMENT)	H.D.G.	16.93	1
2	GU54574	5/8" x 7-1/2" x 4-5/8" x 2-1/2" U-BOLT	H.D.G.	1.62	2
3	GF05	5/8" FLAT WASHER	H.D.G.	0.08	4
4	GL05	5/8" LOCK WASHER	H.D.G.	0.03	4
5	GN05A	5/8" HEX NUT	HDG	0.07	4
6	GU43550	1/2" x 5-1/2" x 3-5/8" x 2-1/2" U-BOLT	H.D.G.	0.77	4
7	GF04	1/2" FLAT WASHER	H.D.G.	0.04	8
8	GL04	1/2" LOCK WASHER	H.D.G.	0.02	8
9	GN04A	1/2" HEX NUT (2H)	H.D.G.	0.06	8



		UNLESS OTHERWISE SPECIFIED: DIMENSIONS ARE IN INCHES TOLERANCE ± 1/16		DESCRIPTION: 15" CENTER CHANNEL BRACKET KIT		
SIZE B		PROPRIETARY AND CONFIDENTIAL THE INFORMATION CONTAINED IN THIS DRAWING IS THE SOLE PROPERTY OF PRO TOWER MANUFACTURING L.L.C. ANY REPRODUCTION IN PART OR AS A WHOLE WITHOUT THE WRITTEN PERMISSION OF PRO TOWER MANUFACTURING L.L.C. IS PROHIBITED.			PRO TOWER MANUFACTURING L.L.C. 5601 San Francisco St. NE Albuquerque, N.M. 87109 (505) 924-2810	DWG NO: MP1186
MATERIAL -	DRAWN BY: AJK CHECKED BY: E.FILMER SHEET: 1 of 1					DATE: 9/12/2022 DATE: 9/12/2022 SCALE: NTS
FINISH H.D.G.						