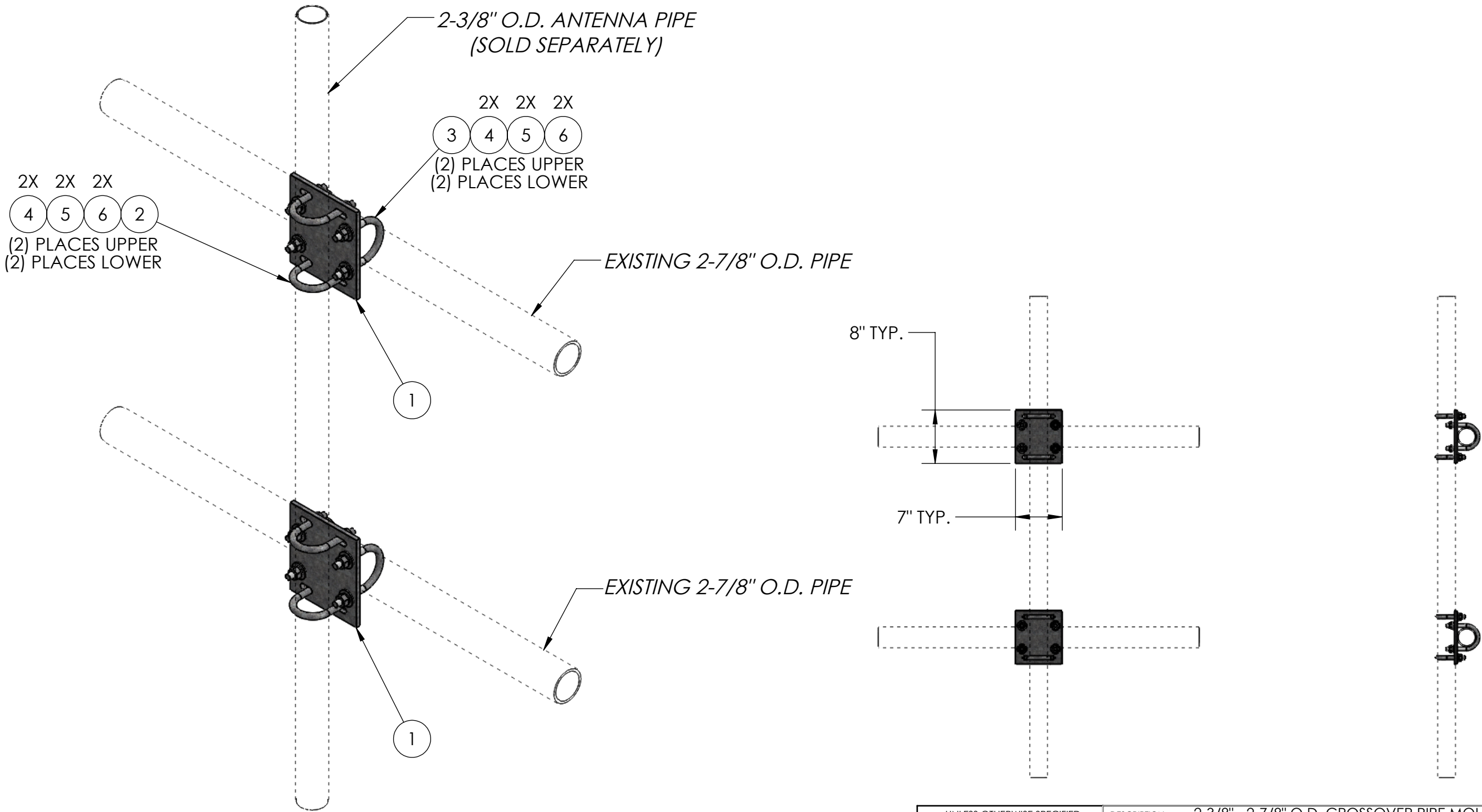


ITEM NO.	PART NUMBER	DESCRIPTION	FINISH	WEIGHT (PER)	QTY.
1	TW1100	MEDIUM CROSSOVER PLATE (3/8" PLATE)	H.D.G.	5.43	2
2	GU42440	1/2" x 4" x 2-1/2" x 2" U-BOLT	H.D.G.	0.57	4
3	GU43045	1/2" x 4-1/2" x 3" x 2" U-BOLT	H.D.G.	0.64	4
4	GF04	1/2" FLAT WASHER	H.D.G.	0.04	16
5	GL04	1/2" LOCK WASHER	H.D.G.	0.02	16
6	GN04A	1/2" HEX NUT	H.D.G.	0.06	16



		UNLESS OTHERWISE SPECIFIED: DIMENSIONS ARE IN INCHES TOLERANCE ± 1/16		DESCRIPTION: 2-3/8" - 2-7/8" O.D. CROSSOVER PIPE MOUNT KIT, PIPE NOT INCLUDED (KIT OF 2)							
		PROPRIETARY AND CONFIDENTIAL THE INFORMATION CONTAINED IN THIS DRAWING IS THE SOLE PROPERTY OF PRO TOWER MANUFACTURING L.L.C. ANY REPRODUCTION IN PART OR AS A WHOLE WITHOUT THE WRITTEN PERMISSION OF PRO TOWER MANUFACTURING L.L.C. IS PROHIBITED.			PRO TOWER MANUFACTURING L.L.C. 5601 San Francisco St. NE Albuquerque, N.M. 87109 (505) 924-2810		DWG NO: TW1093				
SIZE B							DRAWN BY: AJK CHECKED BY: E. FILMER SHEET: 1 of 1		DATE: 6/21/2021 DATE: 6/21/2021 SCALE: NTS		REV WEIGHT: 17.62
MATERIAL -											
FINISH H.D.G.											