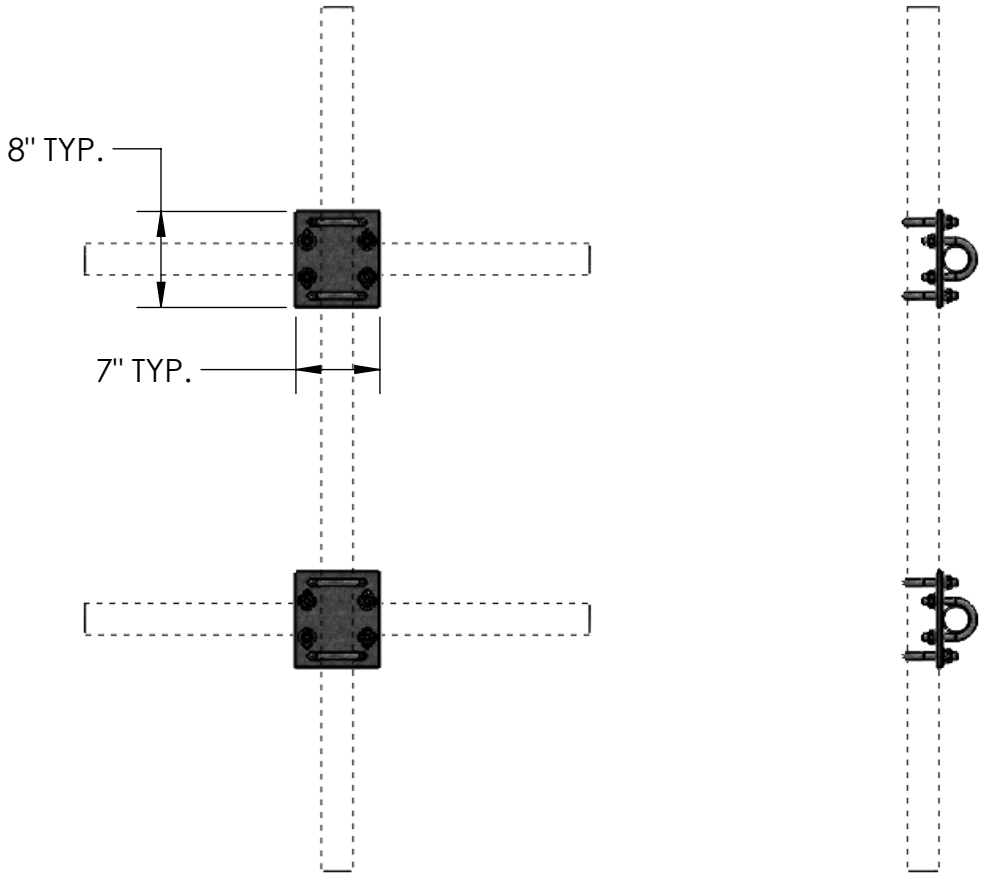
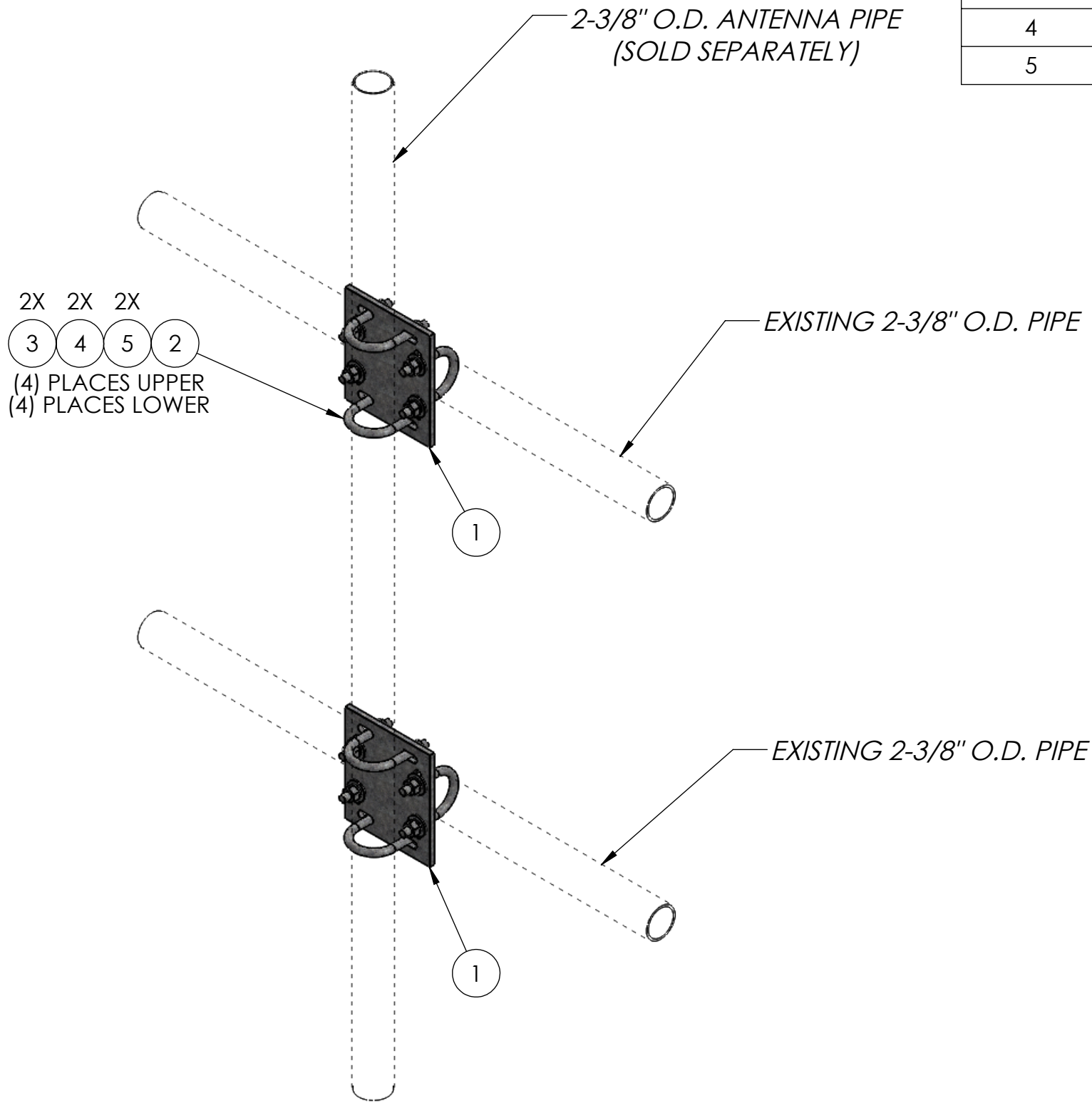


ITEM NO.	PART NUMBER	DESCRIPTION	FINISH	WEIGHT (PER)	QTY.
1	TW1100	MEDIUM CROSSOVER PLATE (3/8" PLATE)	H.D.G.	5.43	2
2	GU42440	1/2" x 4" x 2-1/2" x 2" U-BOLT	H.D.G.	0.57	8
3	GF04	1/2" FLAT WASHER	H.D.G.	0.04	16
4	GL04	1/2" LOCK WASHER	H.D.G.	0.02	16
5	GN04A	1/2" HEX NUT	H.D.G.	0.06	16



		UNLESS OTHERWISE SPECIFIED: DIMENSIONS ARE IN INCHES TOLERANCE ± 1/16		DESCRIPTION: 2-3/8" O.D. CROSSOVER PIPE MOUNT KIT, PIPE NOT INCLUDED (KIT OF 2)			
		SIZE B	PROPRIETARY AND CONFIDENTIAL THE INFORMATION CONTAINED IN THIS DRAWING IS THE SOLE PROPERTY OF PRO TOWER MANUFACTURING L.L.C. ANY REPRODUCTION IN PART OR AS A WHOLE WITHOUT THE WRITTEN PERMISSION OF PRO TOWER MANUFACTURING L.L.C. IS PROHIBITED.		PRO TOWER MANUFACTURING L.L.C. 5601 San Francisco St. NE Albuquerque, N.M. 87109 (505) 924-2810	DWG NO: TW1090	
DRAWN BY: AJK						DATE: 6/21/2021	REV
CHECKED BY: E. FILMER						DATE: 6/21/2021	
MATERIAL -	FINISH H.D.G.					WEIGHT:	
					SCALE: NTS	17.34	
						1 of 1	