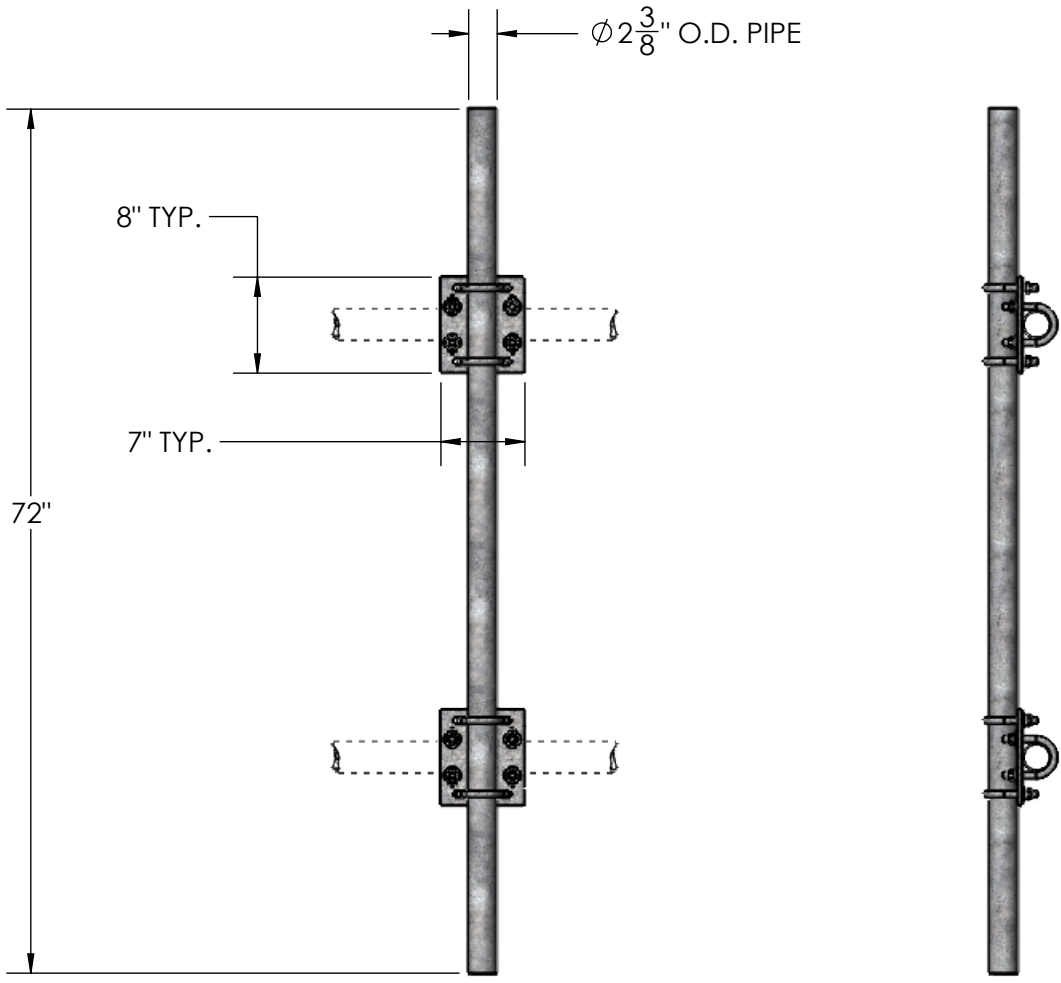


ITEM NO.	PART NUMBER	DESCRIPTION	FINISH	WEIGHT (PER)	QTY.
1	TW1100	MEDIUM CROSSOVER PLATE (3/8" PLATE)	H.D.G.	5.43	2
2	GU42440	1/2" x 4" x 2-1/2" x 2" U-BOLT	H.D.G.	0.57	8
3	GF04	1/2" WASHER	H.D.G.	0.04	16
4	GL04	1/2" LOCK WASHER	H.D.G.	0.02	16
5	GN04A	1/2" HEX NUT	H.D.G.	0.04	16
6	GP2375.072	PLAIN END GALV PIPE, 2-3/8" O.D. x 72" (6'-0")	H.D.G.	14.63	1



<div>UNLESS OTHERWISE SPECIFIED: DIMENSIONS ARE IN INCHES TOLERANCE ± 1/16</div>		DESCRIPTION: 2-3/8" O.D. x 72" PIPE MOUNT KIT				
		<div><div><div>PRO TOWER MANUFACTURING L.L.C.</div><div>5601 San Francisco St. NE Albuquerque, N.M. 87109 (505) 924-2810</div></div></div>	DWG NO: TW1090.072			
<div>OLD PART NO: TW1094</div> <div>FINISH H.D.G.</div>	<div>PROPRIETARY AND CONFIDENTIAL THE INFORMATION CONTAINED IN THIS DRAWING IS THE SOLE PROPERTY OF PRO TOWER MANUFACTURING L.L.C. ANY REPRODUCTION IN PART OR AS A WHOLE WITHOUT THE WRITTEN PERMISSION OF PRO TOWER MANUFACTURING L.L.C. IS PROHIBITED.</div>		<div>DRAWN BY: AJK</div>	<div>DATE: 6/22/2021</div>	REV	
			<div>CHECKED BY: E.FILMER</div>	<div>DATE: 6/22/2021</div>		WEIGHT: 31.58
			<div>SHEET: 1 of 1</div>		<div>SCALE: NTS</div>	