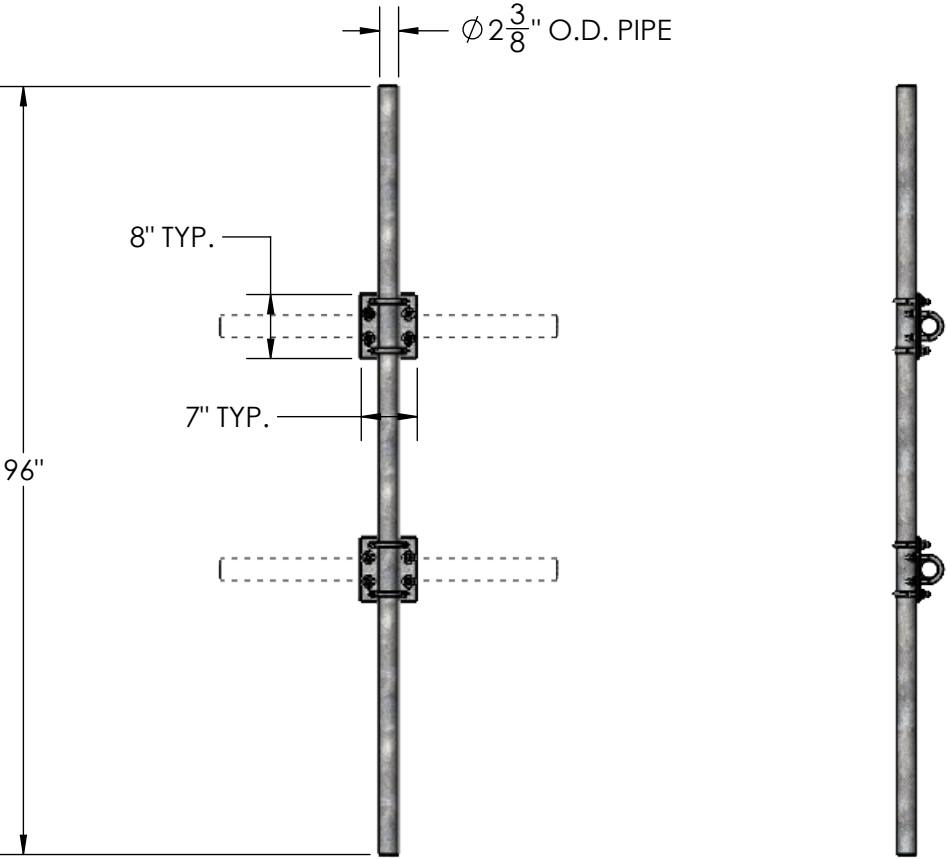
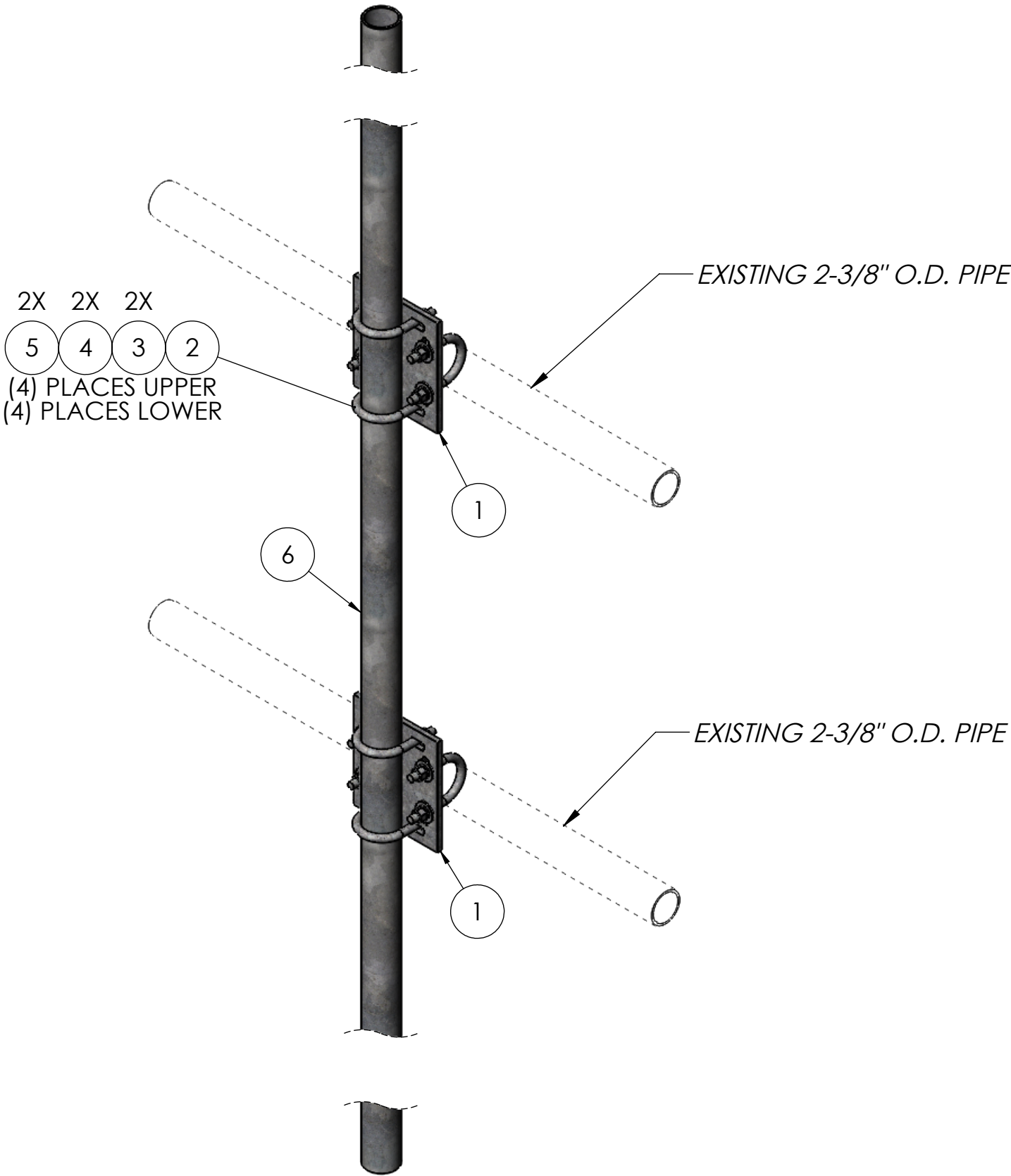



ITEM NO.	PART NUMBER	DESCRIPTION	FINISH	WEIGHT (PER)	QTY.
1	TW1100	MEDIUM CROSSOVER PLATE (3/8" PLATE)	H.D.G.	5.43	2
2	GU42440	1/2" x 4" x 2-1/2" x 2" U-BOLT	H.D.G.	0.57	8
3	GF04	1/2" FLAT WASHER	H.D.G.	0.04	16
4	GL04	1/2" LOCK WASHER	H.D.G.	0.02	16
5	GN04A	1/2" HEX NUT	H.D.G.	0.04	16
6	GP2375.096	PLAIN END GALV PIPE, 2-3/8" O.D. x 96" (8'-0")	H.D.G.	29.33	1



		UNLESS OTHERWISE SPECIFIED:  DIMENSIONS ARE IN INCHES TOLERANCE ± 1/16		DESCRIPTION:  2-3/8" O.D. x 96" PIPE MOUNT KIT		
			PRO TOWER MANUFACTURING L.L.C.  5601 San Francisco St. NE Albuquerque, N.M. 87109 (505) 924-2810	DWG NO:  TW1090.096		
OLD PART NO: TW1096				DRAWN BY: AJK	DATE: 6/22/2021	REV
FINISH H.D.G.				CHECKED BY: E. FILMER	DATE: 6/22/2021	
						SHEET: 1 of 1