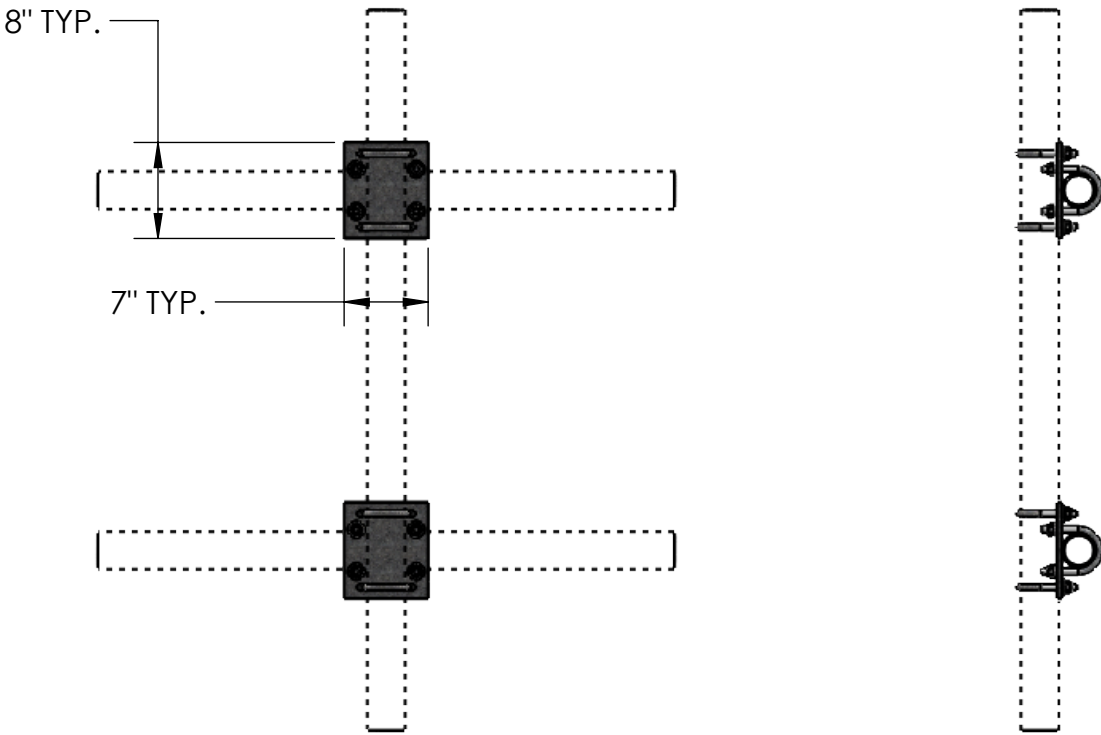
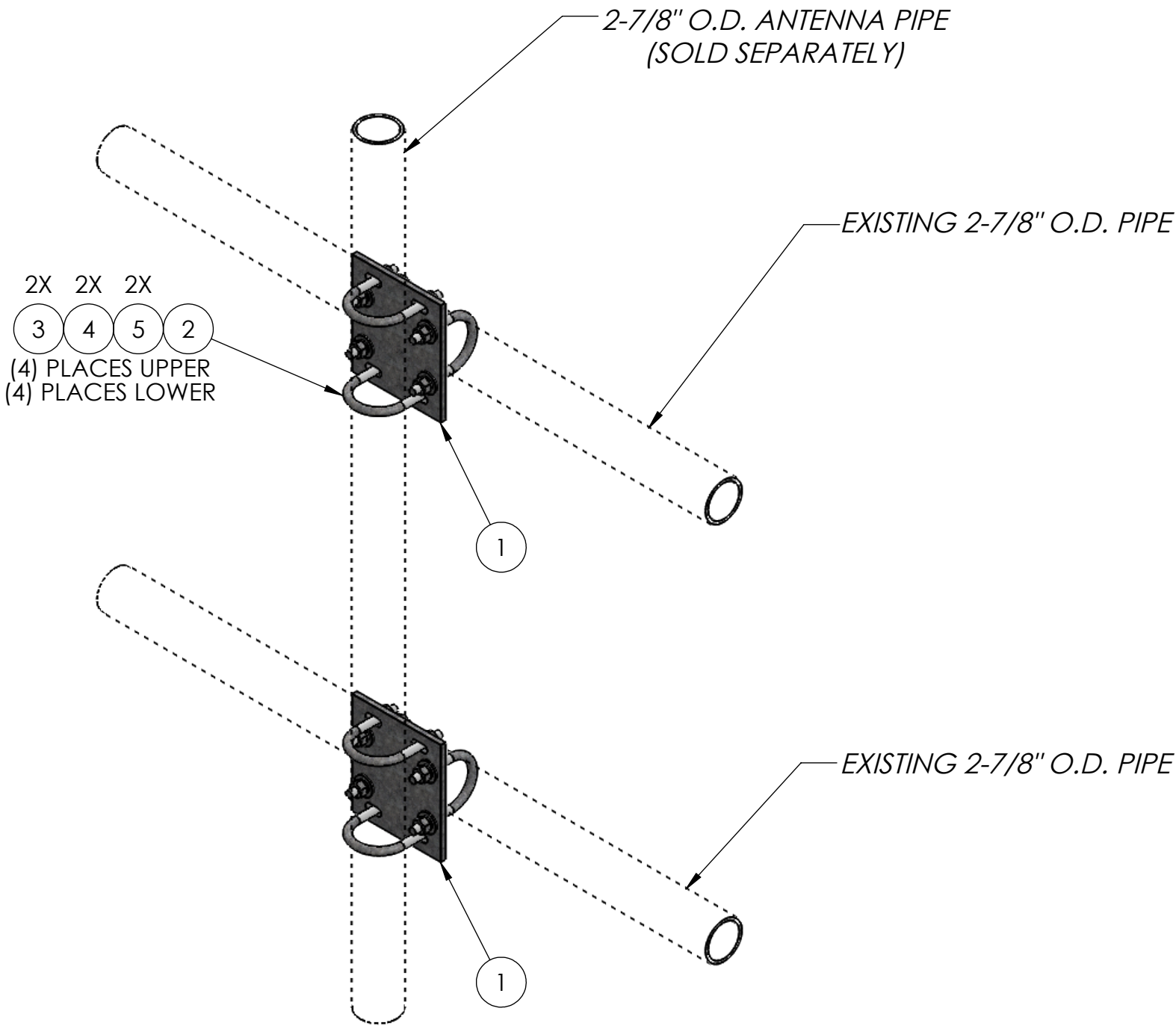


ITEM NO.	PART NUMBER	DESCRIPTION	FINISH	WEIGHT (PER)	QTY.
1	TW1100	MEDIUM CROSSOVER PLATE (3/8" PLATE)	H.D.G.	5.43	2
2	GU43045	1/2" x 4-1/2" x 3" x 2" U-BOLT	H.D.G.	0.64	8
3	GF04	1/2" FLAT WASHER	H.D.G.	0.04	16
4	GL04	1/2" LOCK WASHER	H.D.G.	0.02	16
5	GN04A	1/2" HEX NUT	H.D.G.	0.06	16



<div>SIZE B</div>		UNLESS OTHERWISE SPECIFIED:  DIMENSIONS ARE IN INCHES TOLERANCE ± 1/16	DESCRIPTION: 2-7/8" O.D. CROSSOVER PIPE MOUNT KIT, PIPE NOT INCLUDED (KIT OF 2)		
		<div>PROPRIETARY AND CONFIDENTIAL  THE INFORMATION CONTAINED IN THIS DRAWING IS THE SOLE PROPERTY OF PRO TOWER MANUFACTURING L.L.C. ANY REPRODUCTION IN PART OR AS A WHOLE WITHOUT THE WRITTEN PERMISSION OF PRO TOWER MANUFACTURING L.L.C. IS PROHIBITED.</div>	<div> <b>PRO TOWER MANUFACTURING L.L.C.</b> <b>5601 San Francisco St. NE</b> <b>Albuquerque, N.M. 87109</b> <b>(505) 924-2810</b></div>	DWG NO: TW1091	
DRAWN BY: AJK	DATE: 6/21/2021			REV	
CHECKED BY: E. FILMER	DATE: 6/21/2021				
MATERIAL -	FINISH H.D.G.				SHEET: 1 of 1