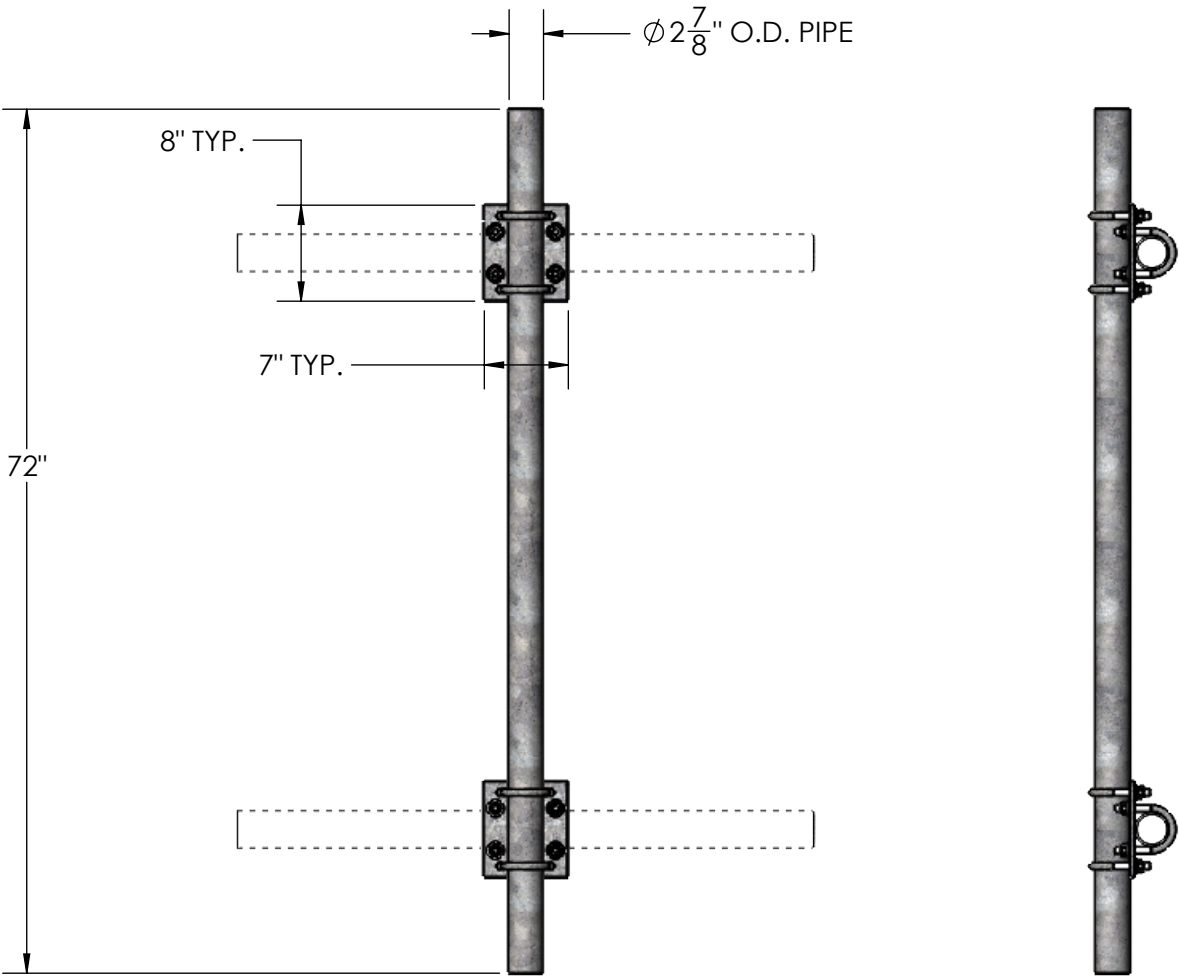
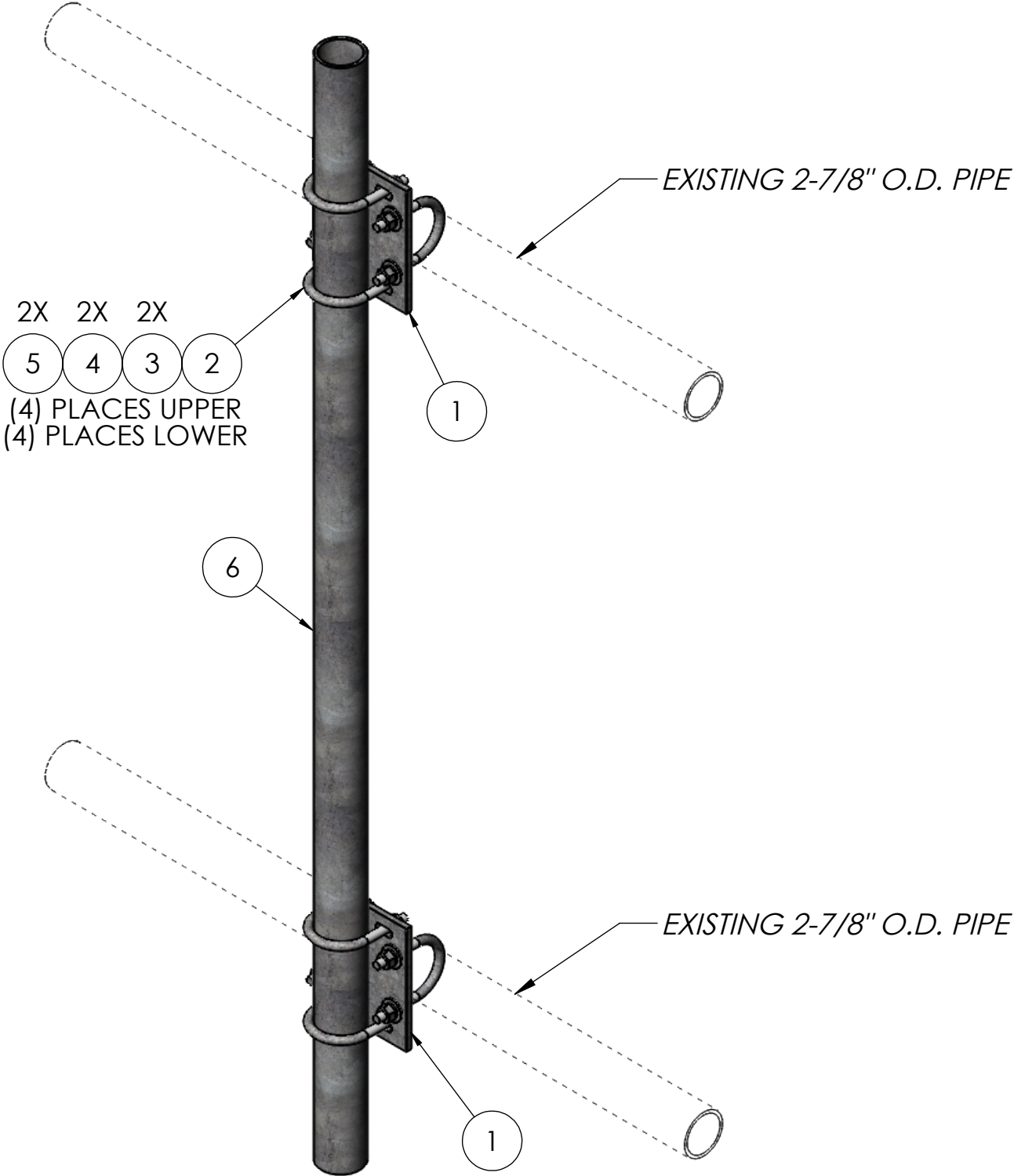



ITEM NO.	PART NUMBER	DESCRIPTION	FINISH	WEIGHT (PER)	QTY.
1	TW1100	MEDIUM CROSSOVER PLATE (3/8" PLATE)	H.D.G.	5.43	2
2	GU43045	1/2" x 4-1/2" x 3" x 1-1/2" U-BOLT	H.D.G.	0.64	8
3	GF04	1/2" FLAT WASHER	H.D.G.	0.04	16
4	GL04	1/2" LOCK WASHER	H.D.G.	0.02	16
5	GN04A	1/2" HEX NUT	H.D.G.	0.06	16
6	GP2875.072	2-1/2" SCH 40 x 72" (2-7/8" O.D.)	H.D.G.	34.88	1



		UNLESS OTHERWISE SPECIFIED: DIMENSIONS ARE IN INCHES TOLERANCE ± 1/16		DESCRIPTION: 2-7/8" O.D. x 72" PIPE MOUNT KIT							
		PROPRIETARY AND CONFIDENTIAL THE INFORMATION CONTAINED IN THIS DRAWING IS THE SOLE PROPERTY OF PRO TOWER MANUFACTURING L.L.C. ANY REPRODUCTION IN PART OR AS A WHOLE WITHOUT THE WRITTEN PERMISSION OF PRO TOWER MANUFACTURING L.L.C. IS PROHIBITED.		 PRO TOWER MANUFACTURING L.L.C. 5601 San Francisco St. NE Albuquerque, N.M. 87109 (505) 924-2810		DWG NO: TW1091.072					
OLD PART NO: TW1095						DRAWN BY: AJK		DATE: 6/29/2021		REV	
FINISH H.D.G.						CHECKED BY: E.FILMER		DATE: 6/29/2021		WEIGHT: 52.79	
						SHEET: 1 of 1		SCALE: NTS			