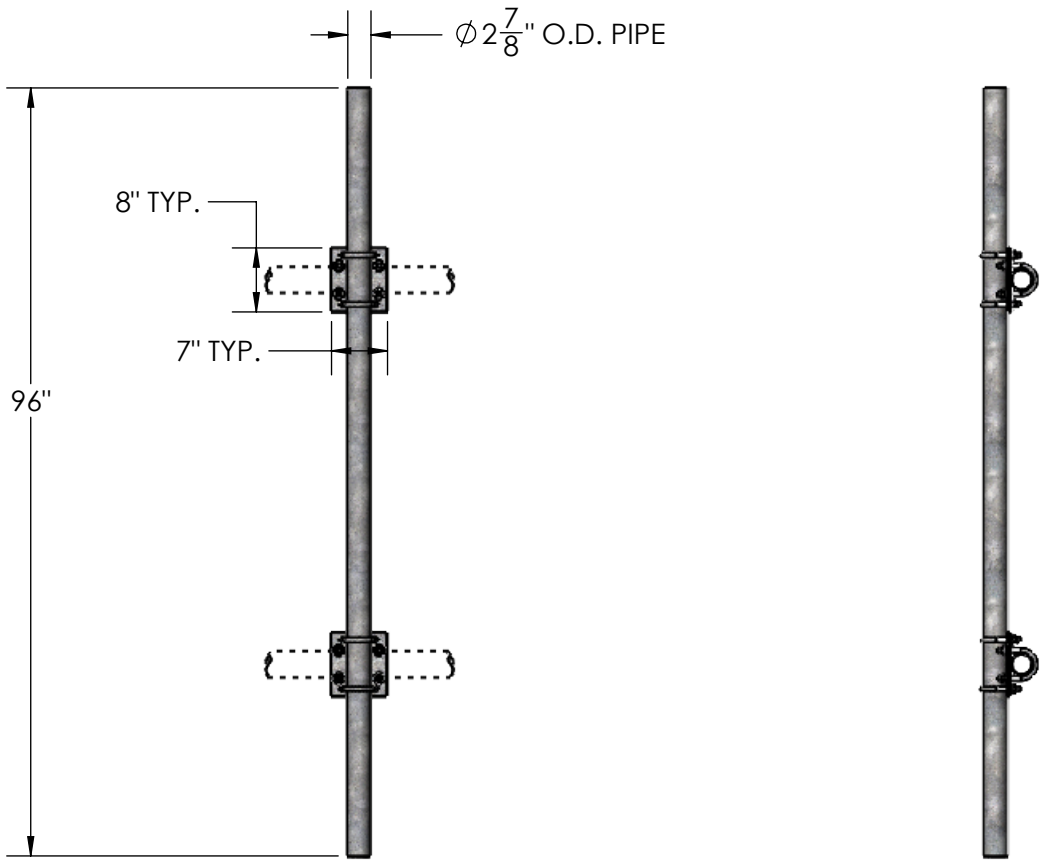


ITEM NO.	PART NUMBER	DESCRIPTION	FINISH	WEIGHT (PER)	QTY.
1	TW1100	MEDIUM CROSSOVER PLATE (3/8" PLATE)	H.D.G.	5.43	2
2	GU43045	1/2" x 4-1/2" x 3" x 1-1/2" U-BOLT	H.D.G.	0.64	8
3	GF04	1/2" FLAT WASHER	H.D.G.	0.04	16
4	GL04	1/2" LOCK WASHER	H.D.G.	0.02	16
5	GN04A	1/2" HEX NUT	H.D.G.	0.06	16
6	GP2875.096	2-7/8" OD X 96" PLAIN END GALV PIPE	H.D.G.	46.51	1



<div>UNLESS OTHERWISE SPECIFIED: DIMENSIONS ARE IN INCHES TOLERANCE ± 1/16</div>		DESCRIPTION: 2-7/8" O.D. x 96" PIPE MOUNT KIT		
		<div><div><div>PRO TOWER MANUFACTURING L.L.C.</div><div>5601 San Francisco St. NE Albuquerque, N.M. 87109 (505) 924-2810</div></div></div>	DWG NO: TW1091.096	
DRAWN BY: AJK	DATE: 6/29/2021		REV	
CHECKED BY: E. FILMER	DATE: 6/29/2021			
OLD PART NO: TW1097	FINISH H.D.G.		SHEET: 1 of 1	SCALE: NTS
<div>PROPRIETARY AND CONFIDENTIAL THE INFORMATION CONTAINED IN THIS DRAWING IS THE SOLE PROPERTY OF PRO TOWER MANUFACTURING L.L.C. ANY REPRODUCTION IN PART OR AS A WHOLE WITHOUT THE WRITTEN PERMISSION OF PRO TOWER MANUFACTURING L.L.C. IS PROHIBITED.</div>				