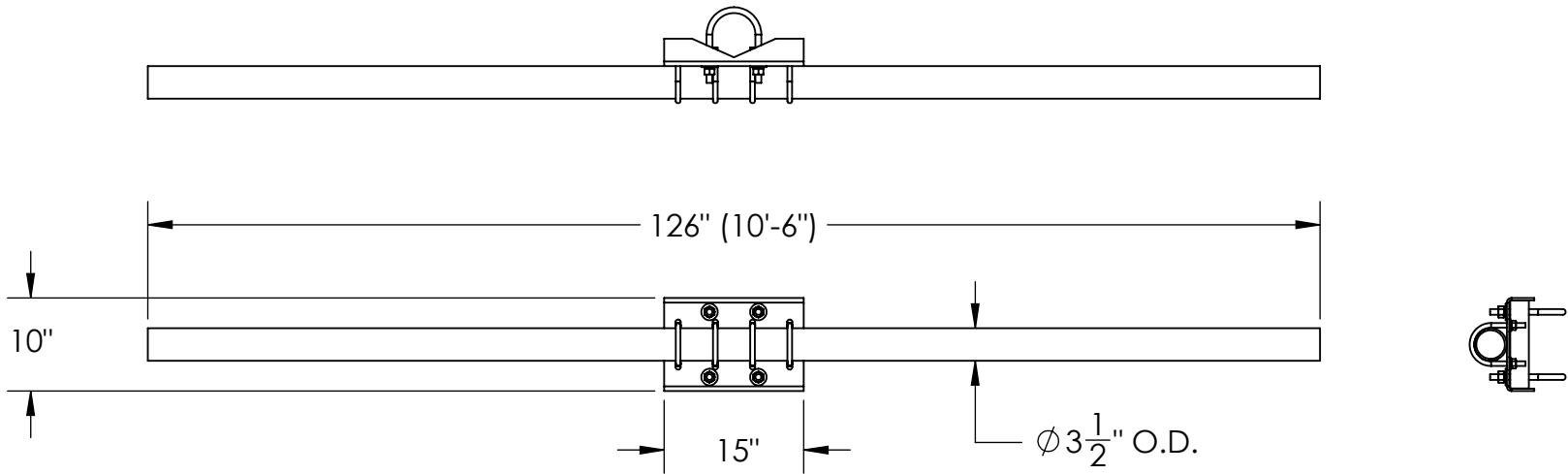


ITEM NO.	PART NUMBER	DESCRIPTION	FINISH	Weight (PER)	QTY.
1	MP1186.01	15" CENTER CHANNEL BRACKET (WELDMENT)	H.D.G.	16.93	1
2	GP3500.126	PLAIN END GALV PIPE, 3-1/2" O.D. x 126" (10'-6")	H.D.G.	79.83	1
3	GU54574	5/8" x 7-1/2" x 4-5/8" x 2-1/2" U-BOLT	H.D.G.	1.62	2
4	GF05	5/8" FLAT WASHER	H.D.G.	0.08	4
5	GL05	5/8" LOCK WASHER	H.D.G.	0.03	4
6	GN05A	5/8" HEX NUT (2H)	H.D.G.	0.12	4
7	GU43550	1/2" x 5-1/2" x 3-5/8" x 2-1/2" U-BOLT	H.D.G.	0.77	4
8	GF04	1/2" FLAT WASHER	H.D.G.	0.04	8
9	GL04	1/2" LOCK WASHER	H.D.G.	0.02	8
10	GN04A	1/2" HEX NUT (2H)	H.D.G.	0.06	8



<div>UNLESS OTHERWISE SPECIFIED: DIMENSIONS ARE IN INCHES TOLERANCE ± 1/16</div>		DESCRIPTION:		CELLULAR PIPE FRAME, 10'-6"		
			<div>PRO TOWER MANUFACTURING L.L.C. 5601 San Francisco St. NE Albuquerque, N.M. 87109 (505) 924-2810</div>	DWG NO:		MP1159
DRAWN BY:	DATE:			REV		
AJK	9/13/2022					
MATERIAL	<div>SIZE B</div>	<div>PROPRIETARY AND CONFIDENTIAL THE INFORMATION CONTAINED IN THIS DRAWING IS THE SOLE PROPERTY OF PRO TOWER MANUFACTURING L.L.C. ANY REPRODUCTION IN PART OR AS A WHOLE WITHOUT THE WRITTEN PERMISSION OF PRO TOWER MANUFACTURING L.L.C. IS PROHIBITED.</div>	CHECKED BY:	DATE:	WEIGHT:	
FINISH			E.FILMER	9/13/2022		
H.D.G.			SHEET:	1 of 1	SCALE:	NTS