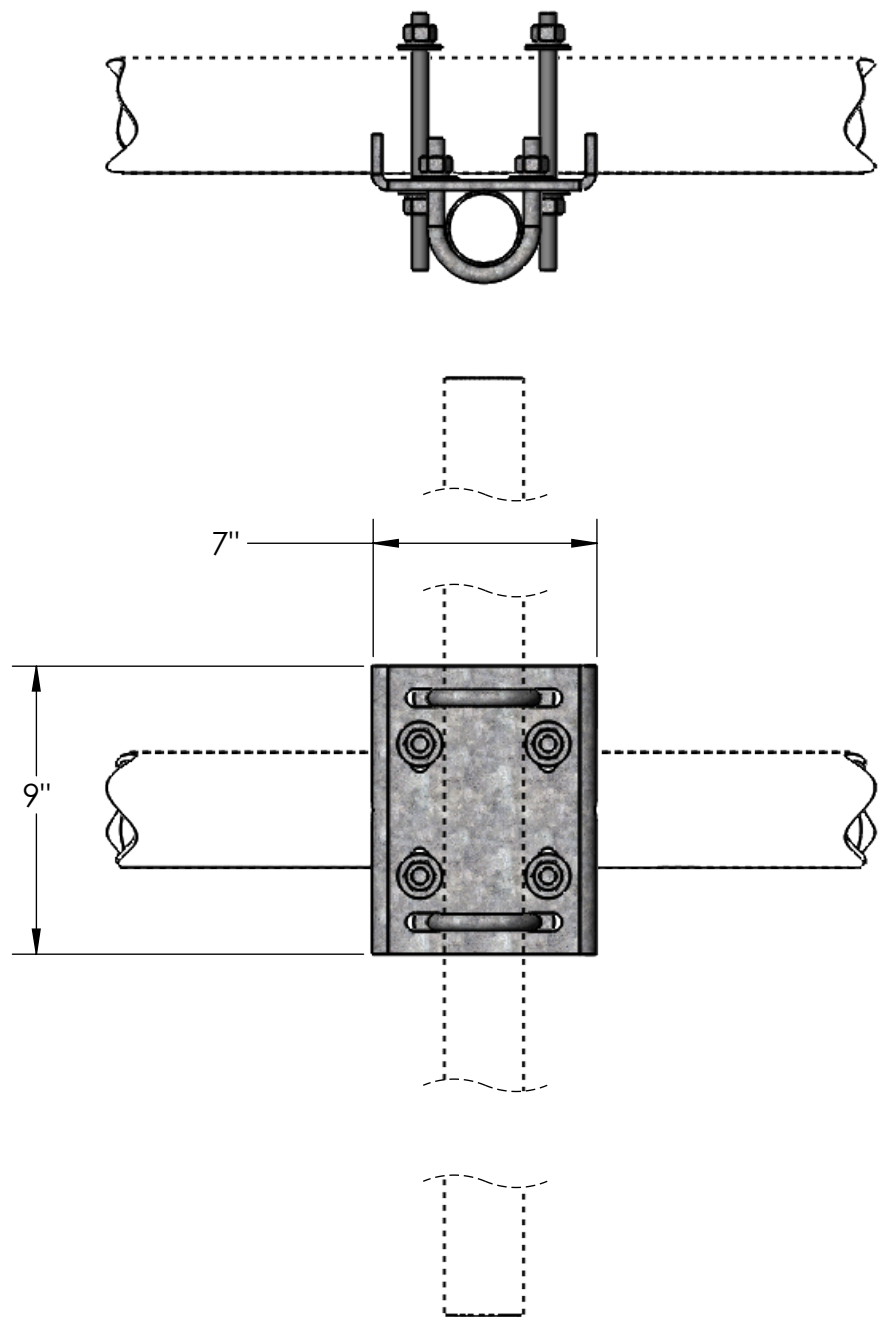
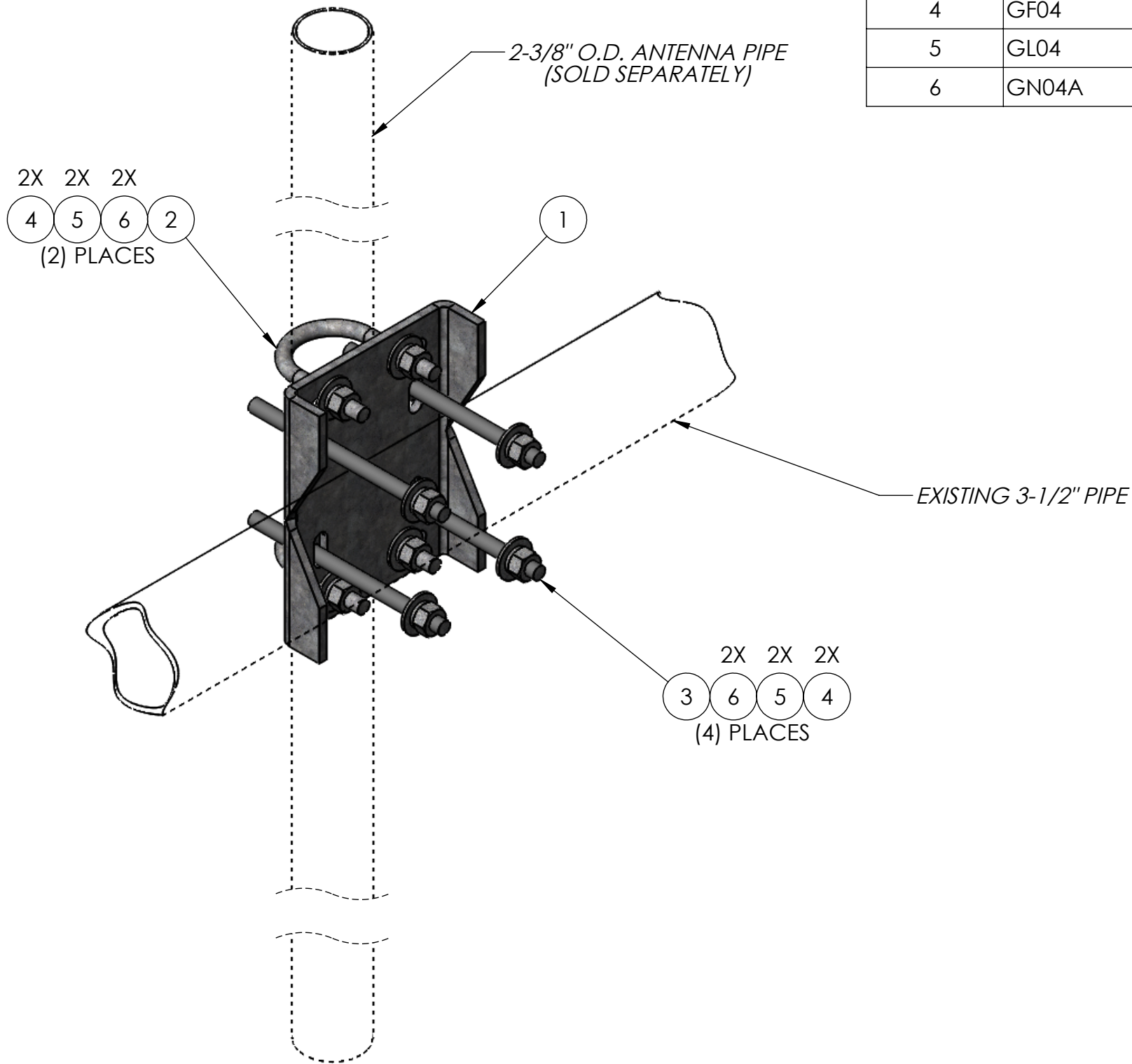


ITEM NO.	PART NUMBER	DESCRIPTION	FINISH	WEIGHT (PER)	QTY.
1	MP1081.01	PIPE MOUNT CHANNEL BRACKET 2-3/8"	H.D.G.	6.57	1
2	GU42440	1/2" x 4" x 2-1/2" x 2" U-BOLT	H.D.G.	0.57	2
3	GR500.008	1/2" x 8" THREADED ROD	H.D.G.	0.45	4
4	GF04	1/2" FLAT WASHER	H.D.G.	0.04	12
5	GL04	1/2" LOCK WASHER	H.D.G.	0.02	12
6	GN04A	1/2" HEX NUT (2H)	H.D.G.	0.06	12



<div>MATERIAL</div> <div>FINISH</div>		<div>SIZE</div> <div>B</div>	UNLESS OTHERWISE SPECIFIED: DIMENSIONS ARE IN INCHES TOLERANCE ± 1/16	DESCRIPTION: CENTER CHANNEL PIPE MOUNT KIT, FITS 2-3/8" OD ANTENNA PIPE, NO PIPE		
			<div></div>	<div>PRO TOWER MANUFACTURING L.L.C.</div> <div>5601 San Francisco St. NE</div> <div>Albuquerque, N.M. 87109</div> <div>(505) 924-2810</div>	DWG NO: MP1090	
<div>DRAWN BY:</div> <div>AJK</div>	<div>DATE:</div> <div>12/2/2021</div>	<div>REV</div> <div></div>				
<div>CHECKED BY:</div> <div>E. FILMER</div>	<div>DATE:</div> <div>12/2/2021</div>					
<div>H.D.G.</div>					<div>PROPRIETARY AND CONFIDENTIAL THE INFORMATION CONTAINED IN THIS DRAWING IS THE SOLE PROPERTY OF PRO TOWER MANUFACTURING L.L.C. ANY REPRODUCTION IN PART OR AS A WHOLE WITHOUT THE WRITTEN PERMISSION OF PRO TOWER MANUFACTURING L.L.C. IS PROHIBITED.</div>	<div>SHEET:</div> <div>1 of 1</div>