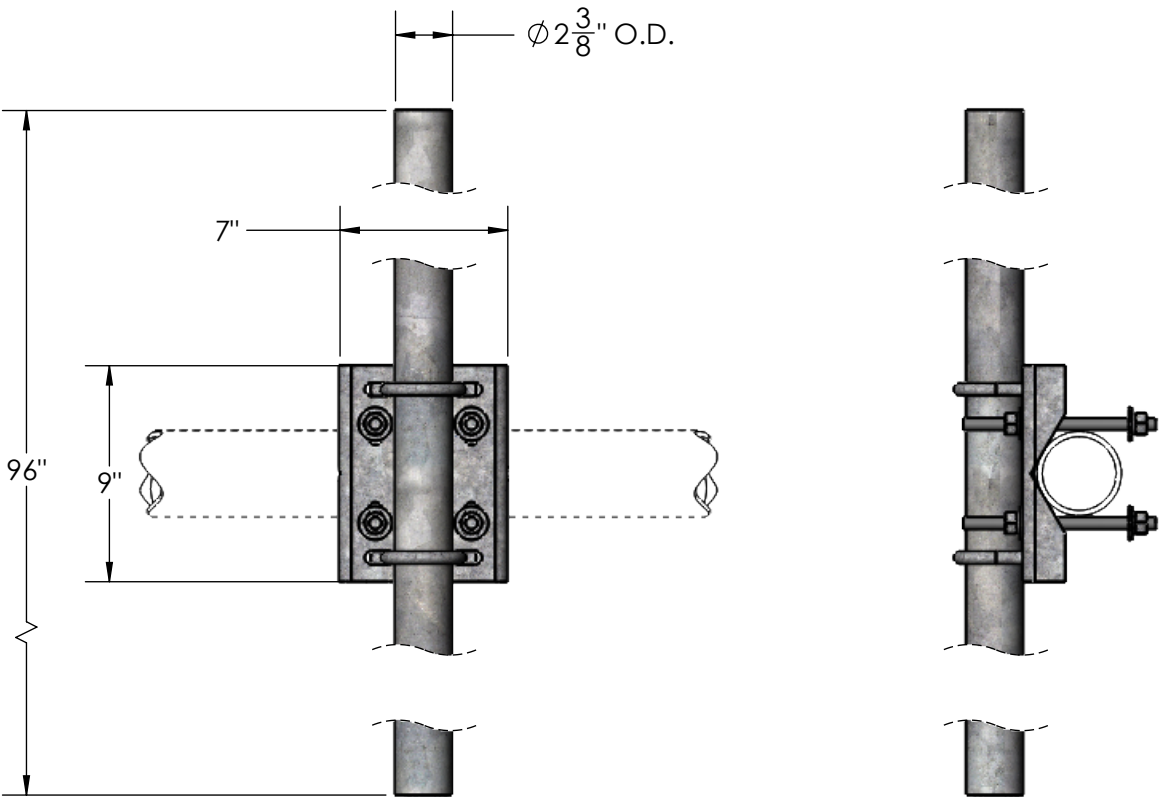
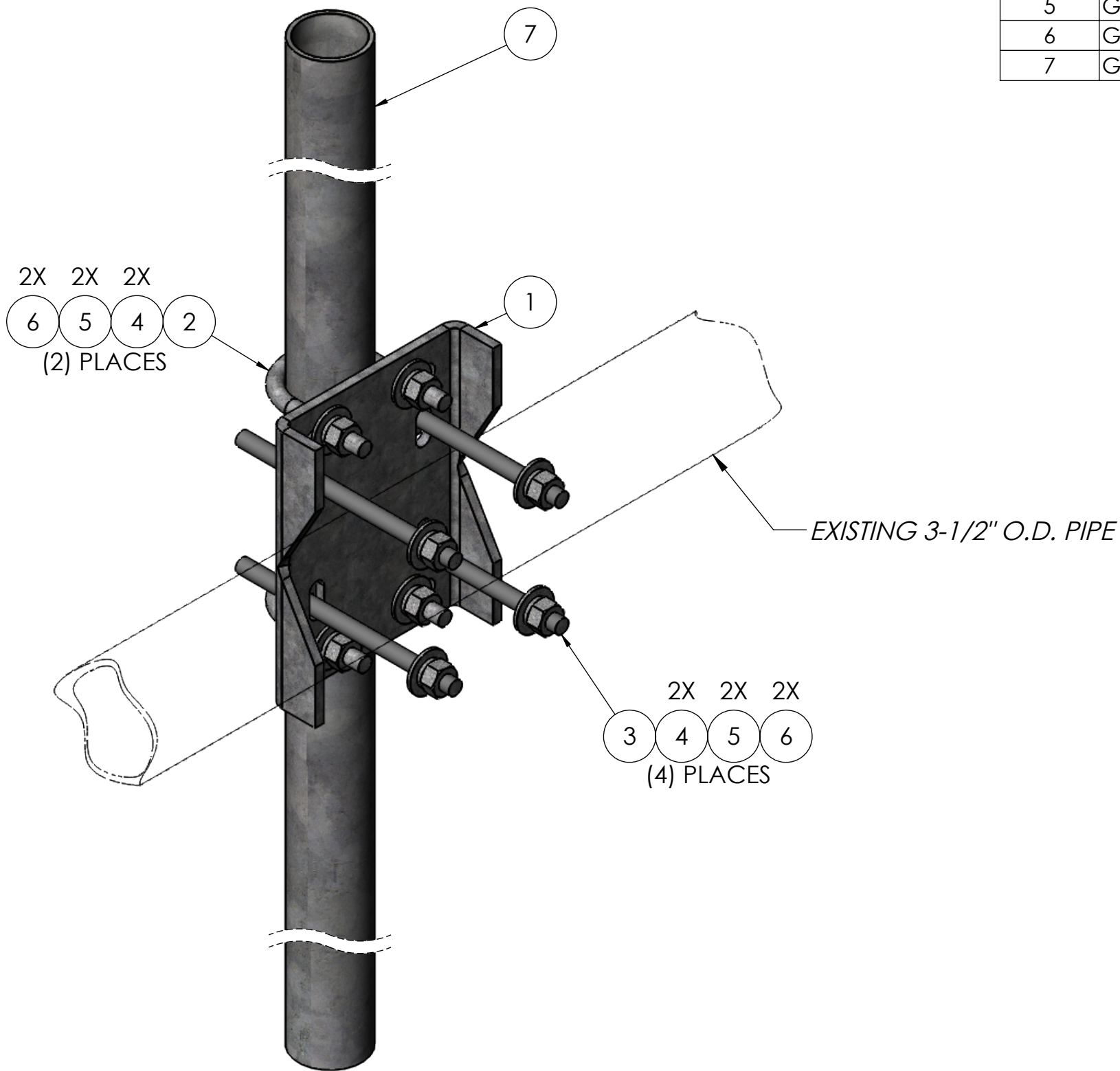


ITEM NO.	PART NUMBER	DESCRIPTION	FINISH	WEIGHT (PER)	QTY.
1	MP1081.01	PIPE MOUNT CHANNEL BRACKET 2-3/8" TO 3-1/2"	H.D.G.	6.57	1
2	GU42440	1/2" x 4" x 2-1/2" x 2" U-BOLT	H.D.G.	0.57	2
3	GR500.008	1/2" x 8" THREADED ROD	H.D.G.	0.45	4
4	GF04	1/2" FLAT WASHER	H.D.G.	0.04	12
5	GL04	1/2" LOCK WASHER	H.D.G.	0.02	12
6	GN04A	1/2" HEX NUT	H.D.G.	0.06	12
7	GP2375.096	PLAIN END GALV PIPE, 2-3/8" O.D. x 96" (8'-0")	H.D.G.	29.33	1



		UNLESS OTHERWISE SPECIFIED: DIMENSIONS ARE IN INCHES TOLERANCE ± 1/16		DESCRIPTION: 2-3/8" O.D. x 96" CENTER CHANNEL PIPE MOUNT KIT			
		SIZE B	PROPRIETARY AND CONFIDENTIAL THE INFORMATION CONTAINED IN THIS DRAWING IS THE SOLE PROPERTY OF PRO TOWER MANUFACTURING L.L.C. ANY REPRODUCTION IN PART OR AS A WHOLE WITHOUT THE WRITTEN PERMISSION OF PRO TOWER MANUFACTURING L.L.C. IS PROHIBITED.		<b>PRO TOWER MANUFACTURING L.L.C.</b> <b>5601 San Francisco St. NE Albuquerque, N.M. 87109 (505) 924-2810</b>	DWG NO:  MP1090.096	
MATERIAL -						DRAWN BY: AJK	DATE: 8/2/2021
FINISH H.D.G.					CHECKED BY: T.SMYTHE	DATE: 8/2/2021	WEIGHT: 40.28
					SHEET: 1 of 1	SCALE: NTS	