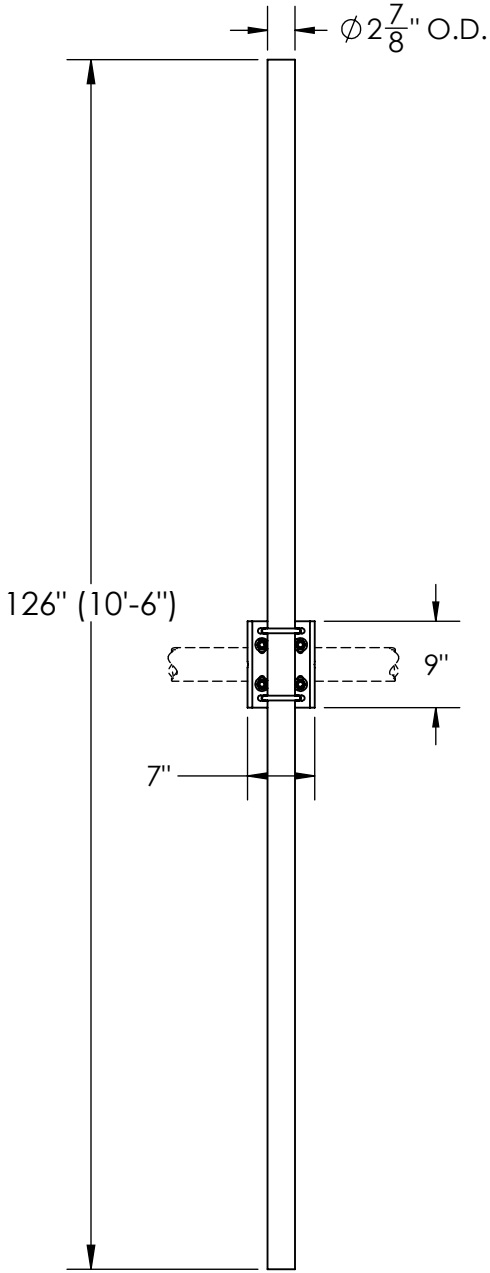
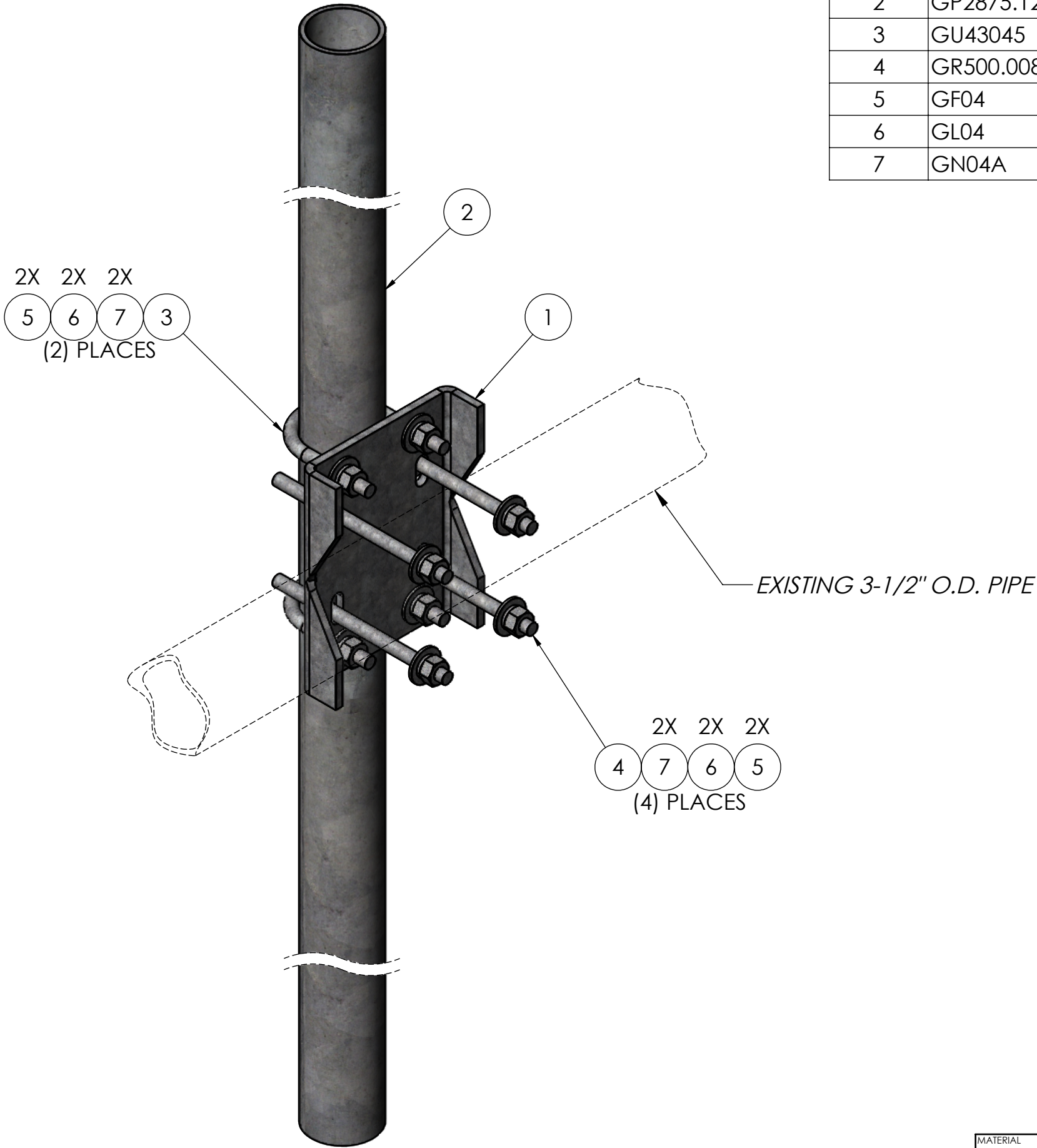


ITEM NO.	PART NUMBER	DESCRIPTION	FINISH	WEIGHT (PER)	QTY.
1	MP1081.01	PIPE MOUNT CHANNEL BRACKET 2-3/8" TO 3-1/2"	H.D.G.	6.57	1
2	GP2875.126	2-7/8" O.D. x 126" PLAIN END GALV PIPE	H.D.G.	61.05	1
3	GU43045	1/2" x 4-1/2" x 3" x 2" U-BOLT	H.D.G.	0.64	2
4	GR500.008	1/2" x 8" THREADED ROD	H.D.G.	0.45	4
5	GF04	1/2" FLAT WASHER	H.D.G.	0.04	12
6	GL04	1/2" LOCK WASHER	H.D.G.	0.02	12
7	GN04A	1/2" HEX NUT (2H)	H.D.G.	0.06	12



<div>MATERIAL</div> <div>FINISH</div>		<div>SIZE</div> <div>B</div>	UNLESS OTHERWISE SPECIFIED: DIMENSIONS ARE IN INCHES TOLERANCE ± 1/16	DESCRIPTION: 2-7/8" O.D. x 126" CENTER CHANNEL PIPE MOUNT KIT		
			PROPRIETARY AND CONFIDENTIAL THE INFORMATION CONTAINED IN THIS DRAWING IS THE SOLE PROPERTY OF PRO TOWER MANUFACTURING L.L.C. ANY REPRODUCTION IN PART OR AS A WHOLE WITHOUT THE WRITTEN PERMISSION OF PRO TOWER MANUFACTURING L.L.C. IS PROHIBITED.	<div></div> <div>PRO TOWER MANUFACTURING L.L.C. 5601 San Francisco St. NE Albuquerque, N.M. 87109 (505) 924-2810</div>	DWG NO: MP1091.126	
<div>DRAWN BY:</div> <div>AJK</div>	<div>DATE:</div> <div>6/15/2022</div>	<div>REV</div>				
<div>CHECKED BY:</div> <div>E. FILMER</div>	<div>DATE:</div> <div>6/15/2022</div>				<div>WEIGHT:</div>	
<div>H.D.G.</div>				<div>SHEET:</div> <div>1 of 1</div>	<div>SCALE:</div> <div>NTS</div>	<div>73.27</div>