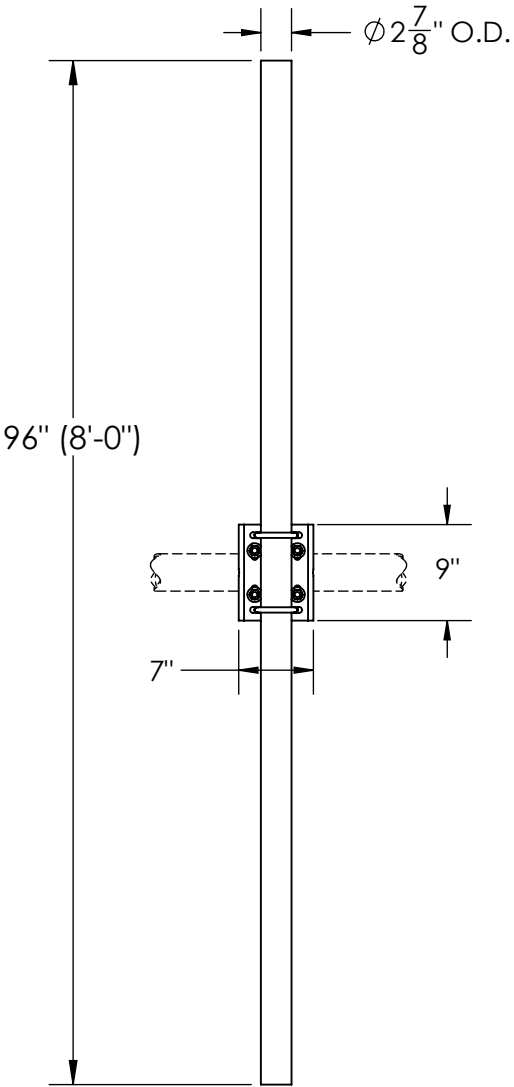
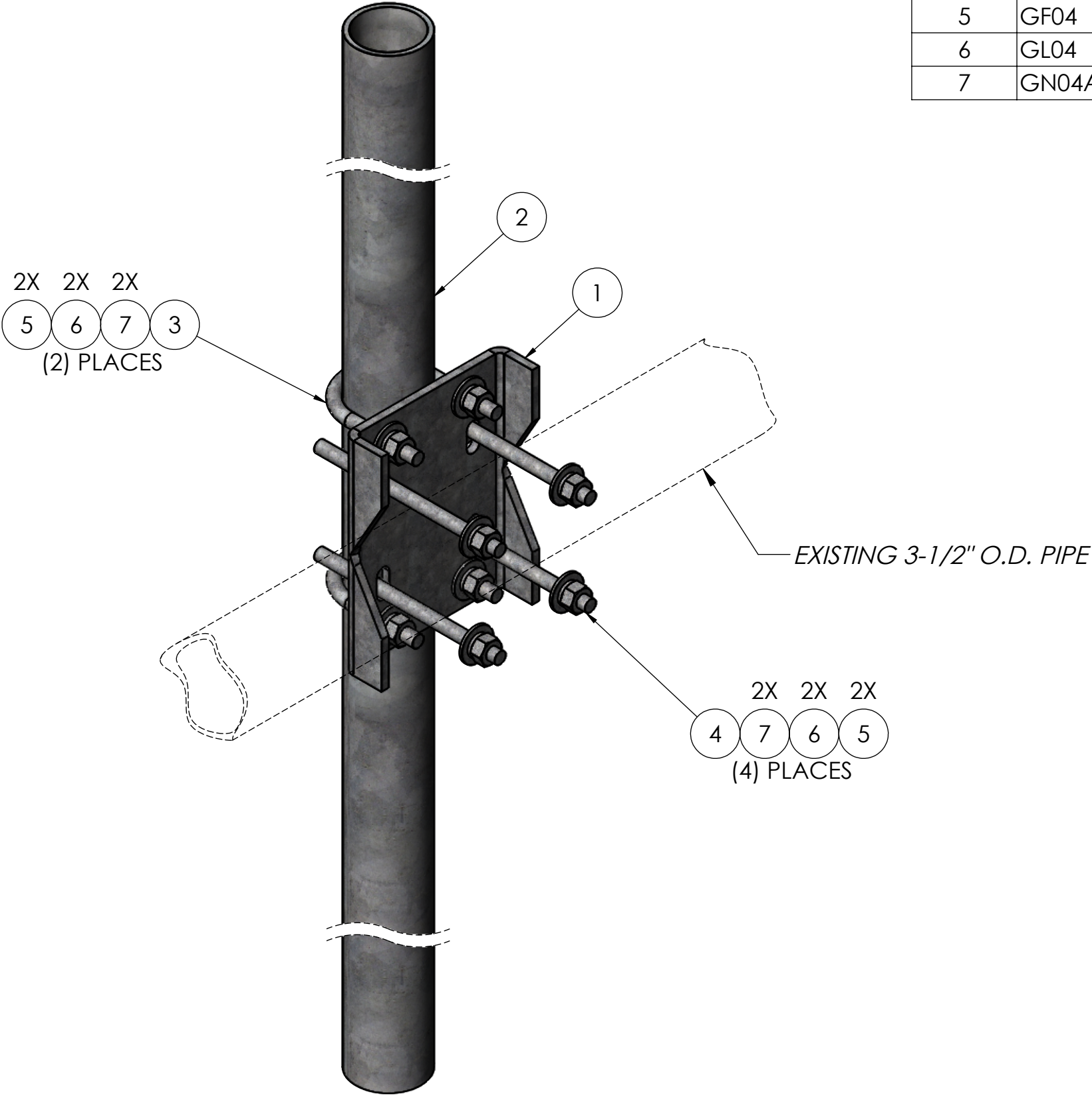


ITEM NO.	PART NUMBER	DESCRIPTION	FINISH	WEIGHT (PER)	QTY.
1	MP1081.01	PIPE MOUNT CHANNEL BRACKET 2-3/8" TO 3-1/2"	H.D.G.	6.57	1
2	GP2875.096	2-7/8" OD X 96" PLAIN END GALV PIPE	H.D.G.	46.51	1
3	GU43045	1/2" x 4-1/2" x 3" x 2" U-BOLT	H.D.G.	0.64	2
4	GR500.008	1/2" x 8" THREADED ROD	H.D.G.	0.45	4
5	GF04	1/2" FLAT WASHER	H.D.G.	0.04	12
6	GL04	1/2" LOCK WASHER	H.D.G.	0.02	12
7	GN04A	1/2" HEX NUT (2H)	H.D.G.	0.06	12



		UNLESS OTHERWISE SPECIFIED: DIMENSIONS ARE IN INCHES TOLERANCE ± 1/16		DESCRIPTION: 2-7/8" O.D. x 96" CENTER CHANNEL PIPE MOUNT KIT				
		SIZE B	PROPRIETARY AND CONFIDENTIAL THE INFORMATION CONTAINED IN THIS DRAWING IS THE SOLE PROPERTY OF PRO TOWER MANUFACTURING L.L.C. ANY REPRODUCTION IN PART OR AS A WHOLE WITHOUT THE WRITTEN PERMISSION OF PRO TOWER MANUFACTURING L.L.C. IS PROHIBITED.		PRO TOWER MANUFACTURING L.L.C. 5601 San Francisco St. NE Albuquerque, N.M. 87109 (505) 924-2810	DWG NO: MP1091.096		
MATERIAL -		FINISH H.D.G.				DRAWN BY: AJK	DATE: 6/15/2022	REV
					CHECKED BY: E. FILMER	DATE: 6/15/2022	WEIGHT:	
					SHEET: 1 of 1	SCALE: NTS	58.44	