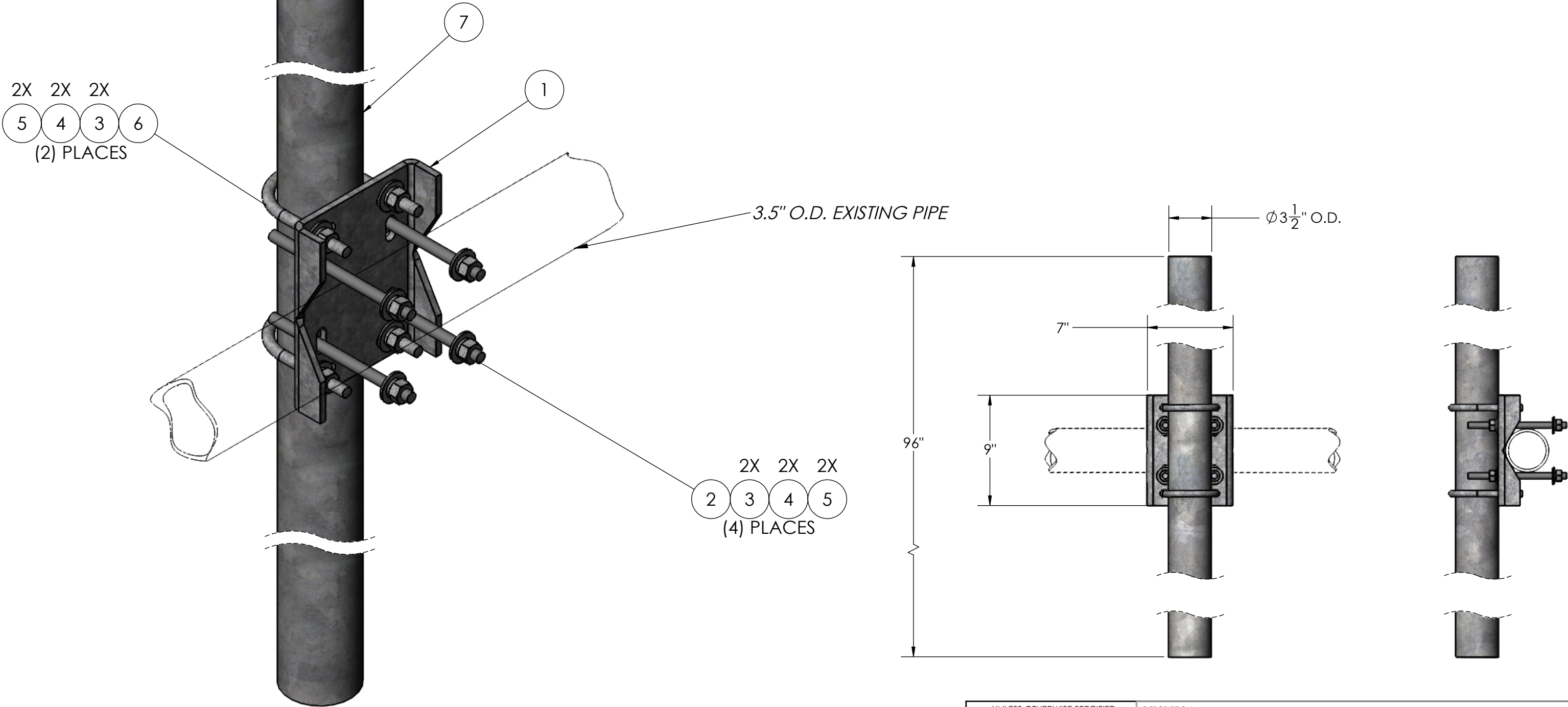



ITEM NO.	PART NUMBER	DESCRIPTION	FINISH	WEIGHT (PER)	QTY.
1	MP1081.01	PIPE MOUNT CHANNEL BRACKET 2-3/8" TO 3-1/2"	H.D.G.	6.57	1
2	GR500.008	1/2" x 8" THREADED ROD	H.D.G.	0.45	4
3	GF04	1/2" FLAT WASHER	H.D.G.	0.04	12
4	GL04	1/2" LOCK WASHER	H.D.G.	0.02	12
5	GN04A	1/2" HEX NUT	H.D.G.	0.06	12
6	GU43550	1/2" x 5-1/2" x 3-5/8" x 2-1/2" U-BOLT	H.D.G.	0.77	2
7	GP3500.096	PLAIN END GALV PIPE, 3-1/2" O.D. x 96" (8'-0")	H.D.G.	60.83	1



		UNLESS OTHERWISE SPECIFIED: DIMENSIONS ARE IN INCHES TOLERANCE ± 1/16		DESCRIPTION: 3-1/2" O.D. x 96" CENTER CHANNEL PIPE MOUNT				
		SIZE B	PROPRIETARY AND CONFIDENTIAL THE INFORMATION CONTAINED IN THIS DRAWING IS THE SOLE PROPERTY OF PRO TOWER MANUFACTURING L.L.C. ANY REPRODUCTION IN PART OR AS A WHOLE WITHOUT THE WRITTEN PERMISSION OF PRO TOWER MANUFACTURING L.L.C. IS PROHIBITED.		PRO TOWER MANUFACTURING L.L.C. 5601 San Francisco St. NE Albuquerque, N.M. 87109 (505) 924-2810	DWG NO: MP1093.096		
MATERIAL -						DRAWN BY: AJK	DATE: 8/3/2021	REV
FINISH H.D.G.						CHECKED BY: T.SMYTHE	DATE: 8/3/2021	