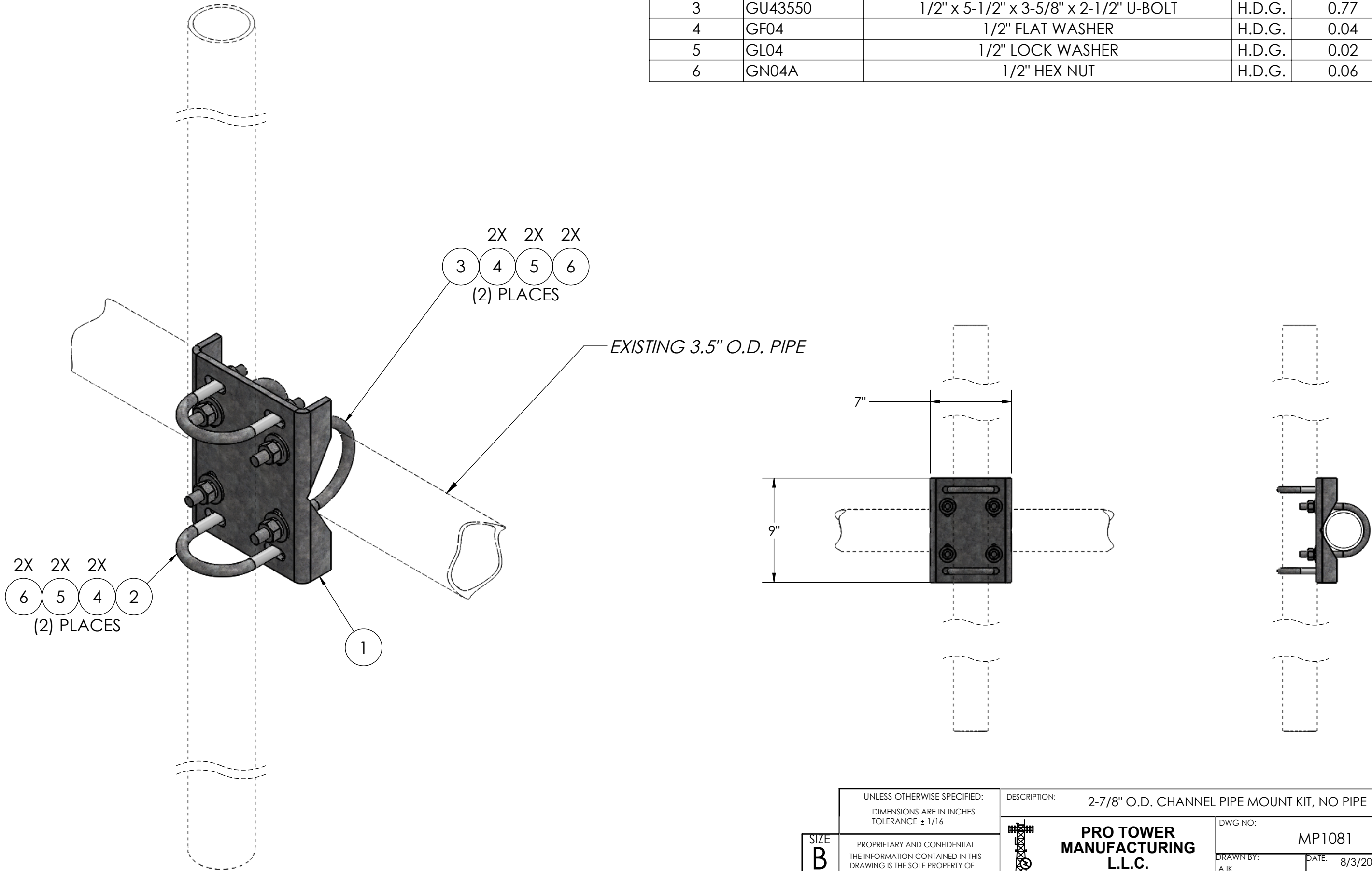


ITEM NO.	PART NUMBER	DESCRIPTION	FINISH	WEIGHT (PER)	QTY.
1	MP1081.01	PIPE MOUNT CHANNEL BRACKET 2-3/8" TO 3-1/2"	H.D.G.	6.57	1
2	GU43045	1/2" x 4-1/2" x 3" x 1-1/2" U-BOLT	H.D.G.	0.64	2
3	GU43550	1/2" x 5-1/2" x 3-5/8" x 2-1/2" U-BOLT	H.D.G.	0.77	2
4	GF04	1/2" FLAT WASHER	H.D.G.	0.04	8
5	GL04	1/2" LOCK WASHER	H.D.G.	0.02	8
6	GN04A	1/2" HEX NUT	H.D.G.	0.06	8



		UNLESS OTHERWISE SPECIFIED: DIMENSIONS ARE IN INCHES TOLERANCE ± 1/16		DESCRIPTION: 2-7/8" O.D. CHANNEL PIPE MOUNT KIT, NO PIPE				
		SIZE B	PROPRIETARY AND CONFIDENTIAL THE INFORMATION CONTAINED IN THIS DRAWING IS THE SOLE PROPERTY OF PRO TOWER MANUFACTURING L.L.C. ANY REPRODUCTION IN PART OR AS A WHOLE WITHOUT THE WRITTEN PERMISSION OF PRO TOWER MANUFACTURING L.L.C. IS PROHIBITED.		PRO TOWER MANUFACTURING L.L.C. 5601 San Francisco St. NE Albuquerque, N.M. 87109 (505) 924-2810	DWG NO: MP1081		
MATERIAL -						DRAWN BY: AJK		DATE: 8/3/2021
FINISH H.D.G.		CHECKED BY: T.SMYTHE		DATE: 8/3/2021		WEIGHT: 10.36		
		SHEET: 1 of 1		SCALE: NTS				