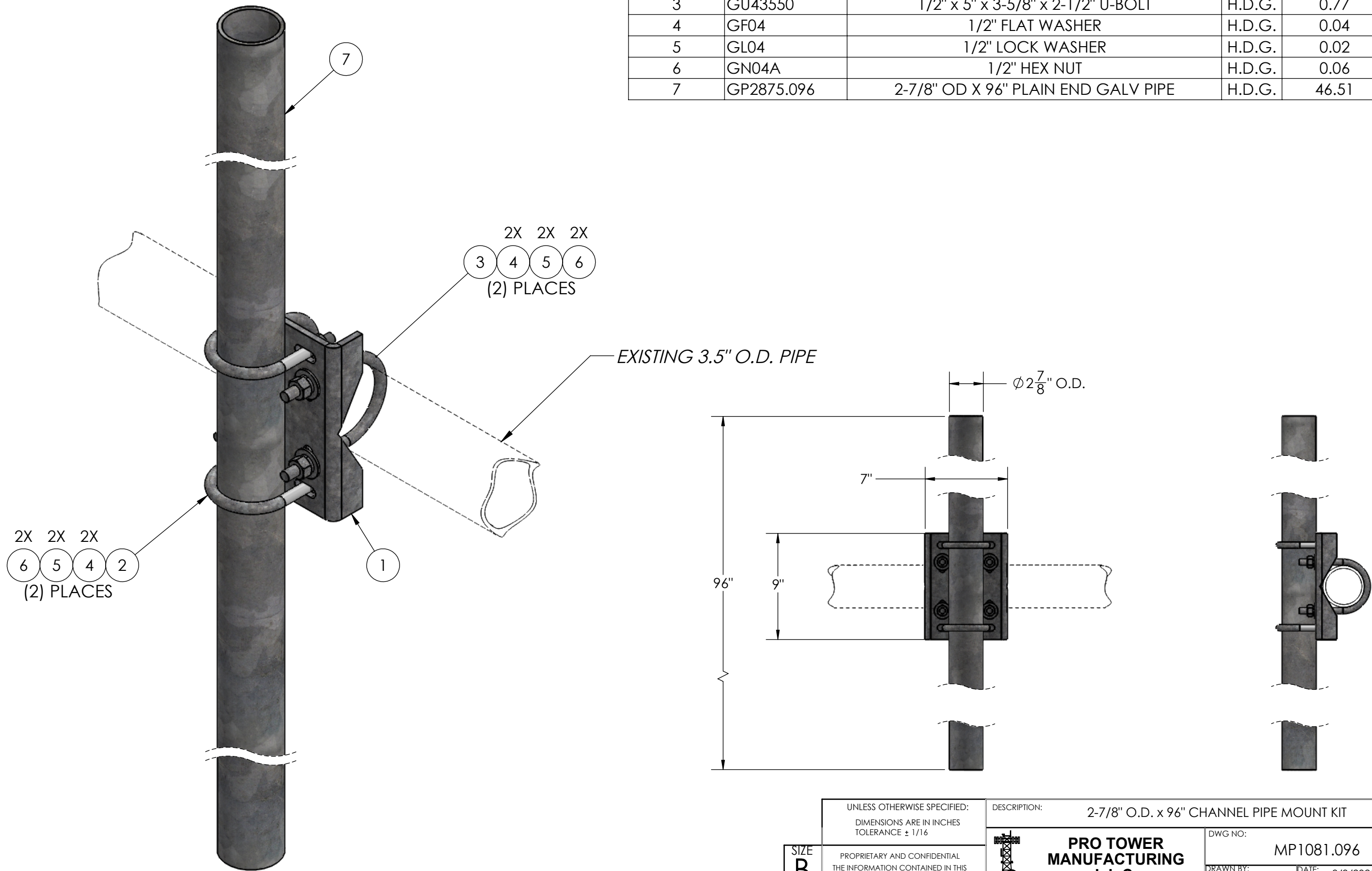


ITEM NO.	PART NUMBER	DESCRIPTION	FINISH	WEIGHT (PER)	QTY.
1	MP1081.01	PIPE MOUNT CHANNEL BRACKET 2-3/8" TO 3-1/2"	H.D.G.	6.57	1
2	GU43045	1/2" x 4-1/2" x 3" x 1-1/2" U-BOLT	H.D.G.	0.64	2
3	GU43550	1/2" x 5" x 3-5/8" x 2-1/2" U-BOLT	H.D.G.	0.77	2
4	GF04	1/2" FLAT WASHER	H.D.G.	0.04	8
5	GL04	1/2" LOCK WASHER	H.D.G.	0.02	8
6	GN04A	1/2" HEX NUT	H.D.G.	0.06	8
7	GP2875.096	2-7/8" OD X 96" PLAIN END GALV PIPE	H.D.G.	46.51	1



		UNLESS OTHERWISE SPECIFIED: DIMENSIONS ARE IN INCHES TOLERANCE ± 1/16		DESCRIPTION: 2-7/8" O.D. x 96" CHANNEL PIPE MOUNT KIT			
		PROPRIETARY AND CONFIDENTIAL THE INFORMATION CONTAINED IN THIS DRAWING IS THE SOLE PROPERTY OF PRO TOWER MANUFACTURING L.L.C. ANY REPRODUCTION IN PART OR AS A WHOLE WITHOUT THE WRITTEN PERMISSION OF PRO TOWER MANUFACTURING L.L.C. IS PROHIBITED.		 PRO TOWER MANUFACTURING L.L.C. 5601 San Francisco St. NE Albuquerque, N.M. 87109 (505) 924-2810		DWG NO: MP1081.096	
OLD PART NO: MP1089		FINISH H.D.G.				DRAWN BY: AJK CHECKED BY: T.SMYTHE SHEET: 1 of 1	
SIZE B						DATE: 8/3/2021 DATE: 8/3/2021 SCALE: NTS	
						REV WEIGHT: 56.87	