

# PRO TOWER MANUFACTURING LLC.

PROJECT DESCRIPTION:  
 FABRICATION SHOP PRINTS FOR A  
 -TW1126 UNIVERSAL SADDLE MOUNT  
 FITS:

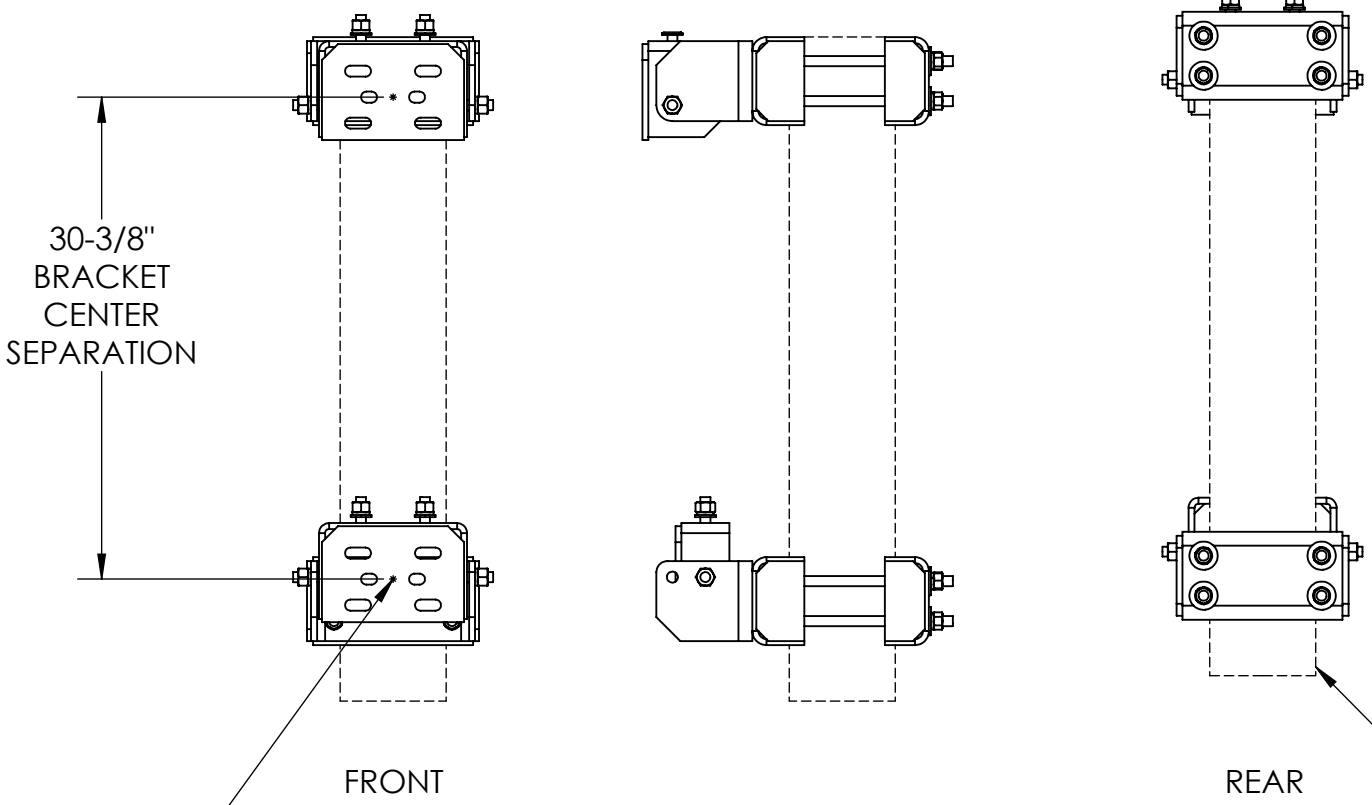
- ANGLE TOWER LEGS (2-3/4" - 4-1/2" LEGS)
- PIPE TOWER LEGS (Ø1-3/4" O.D. - Ø6-5/8" O.D.)

ALSO CAPABLE OF 8° TILT FORWARD FROM PLUMB WITH THE ABILITY TO SET AT 1° INCREMENTS  
 AT A 30-3/8" CENTER TO CENTER OF BRACKET SEPARATION

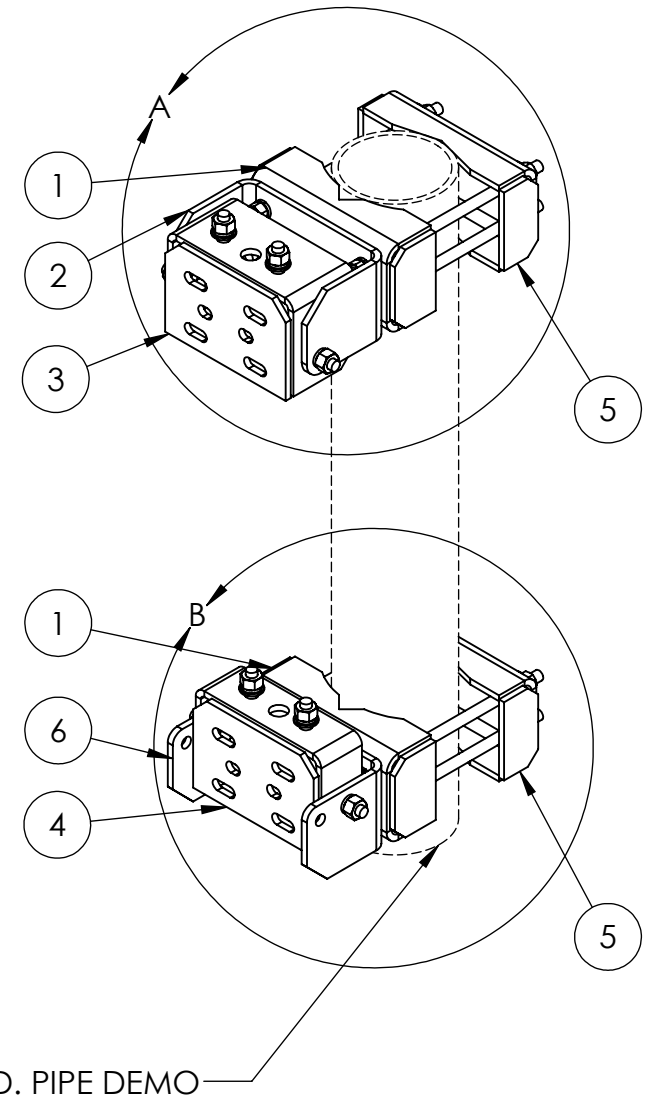
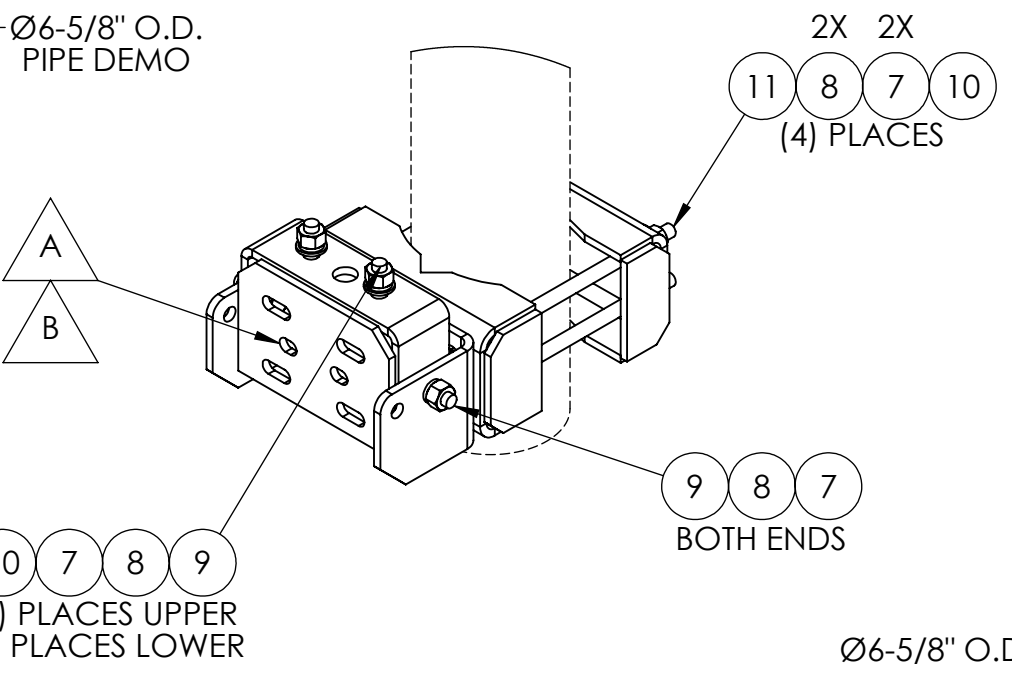
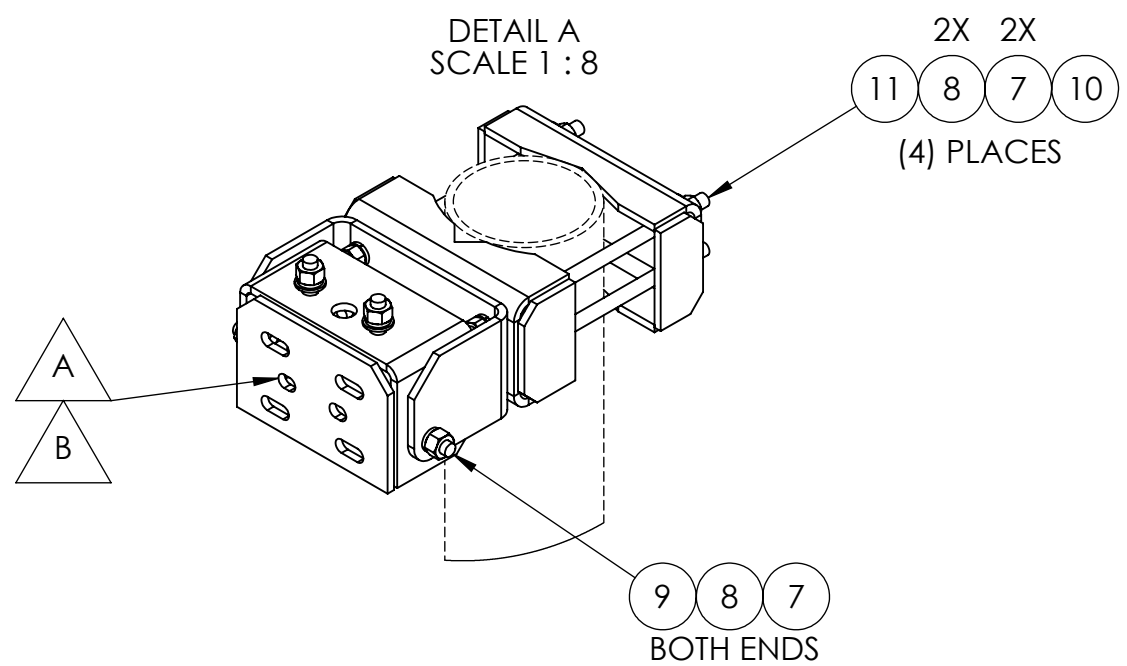
		UNLESS OTHERWISE SPECIFIED: DIMENSIONS ARE IN INCHES TOLERANCE ± 1/16	DESCRIPTION: UNIVERSAL SADDLE MOUNT		
		PROPRIETARY AND CONFIDENTIAL THE INFORMATION CONTAINED IN THIS DRAWING IS THE SOLE PROPERTY OF PRO TOWER MANUFACTURING L.L.C. ANY REPRODUCTION IN PART OR AS A WHOLE WITHOUT THE WRITTEN PERMISSION OF PRO TOWER MANUFACTURING L.L.C. IS PROHIBITED.	<b>PRO TOWER          MANUFACTURING          L.L.C.</b> <b>5601 San Francisco St. NE</b> <b>Albuquerque, N.M. 87109</b> <b>(505) 924-2810</b>	DWG NO: TW1126	
MATERIAL	-			DRAWN BY: AJK	DATE: 4/13/2022
FINISH	-		CHECKED BY: E. FILMER	DATE: 4/13/2022	WEIGHT: -
			SHEET: 1 of 4	SCALE: NTS	

REVISIONS			
REV.	DESCRIPTION	DATE	APPROVED
A	TW1126.3 & TW1126.4 EXISTING SLOT LENGTH DIMENSION INCREASE. SLOT SPREAD DIMENSIONS INCREASED TO INCLUDE ADDITIONAL SLOTS (SEE SHEETS 10-17)	12/28/20	E. FILMER
B	TW1126.3 & TW1126.4 FORMED BRACKET PLATE LEGS REDUCED IN SIZE FROM 6-3/8" LG. TO 6" LG. TYP. (SEE SHEETS 10-17)	01/04/21	E. FILMER
C	ALL FILLET WELDS CHANGED TO 1/4"	03/18/21	T. SMYTHE
D	BRACE (WELDMENT) FACE PLATES LENGTHENED TO ALLOW FOR EASE OF FABRICATION FIT UP. INCREASED CHAMFER SIZE TO ALLOW GALV. TO RUN OUT WHEN DIPPED	04/13/22	E. FILMER

ITEM NO.	PART NUMBER	DESCRIPTION	FINISH	WEIGHT (PER)	QTY.
1	TW1126.1	TOWER LEG CLAMP (WELDMENT)	H.D.G.	13.24	2
2	TW1126.2	HINGE BRACE (F.B. 5" x 3/8" x 20-3/4")	H.D.G.	10.62	1
3	TW1126.3	ADJUSTABLE BRACE (WELDMENT)	H.D.G.	13.99	1
4	TW1126.4	LOWER FIXED PIVOT BRACE (WELDMENT)	H.D.G.	11.09	1
5	TW1126.5	TOWER LEG CLAMP (WELDMENT)	H.D.G.	12.14	2
6	TW1126.6	HINGE BRACE (F.B. 5" x 3/8" x 20-3/4")	H.D.G.	10.57	1
7	GL05	5/8" LOCK WASHER	H.D.G.	0.03	24
8	GN05A	5/8" HEX NUT (2H)	H.D.G.	0.12	24
9	GB0520A	5/8" x 2" HEX BOLT	H.D.G.	0.28	8
10	GF05A	5/8" FLAT WASHER	H.D.G.	0.08	12
11	GR625.014	5/8" X 14" THREADED ROD	H.D.G.	1.22	8



IN ORDER TO ACHIEVE 8° OF TILT FORWARD FROM PLUMB, BRACKET CENTER SEPARATION MUST BE SET AT 30-3/8" AS SHOWN



PLEASE SEE SHEET 3 FOR MULTIPLE TOWER LEG CONFIGURATIONS

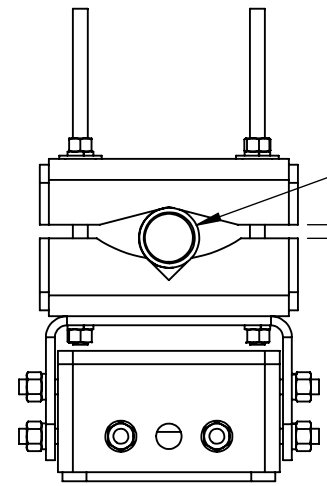
UNIVERSAL SADDLE MOUNT FITS:  
 -ANGLE TOWER LEGS (2-3/4" - 4-1/2")  
 -PIPE TOWER LEGS (Ø1-3/4" - Ø6-5/8" O.D.)

DETAIL B  
SCALE 1 : 8

Ø6-5/8" O.D. PIPE DEMO

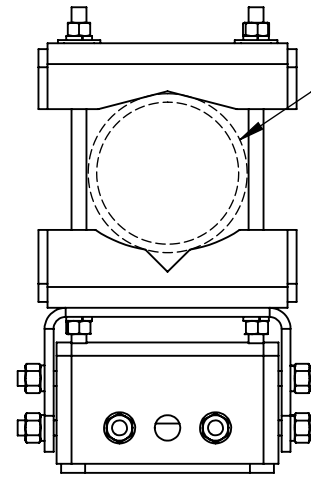
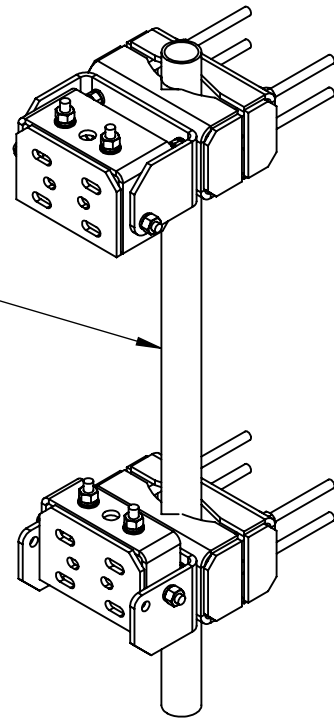
UNLESS OTHERWISE SPECIFIED: DIMENSIONS ARE IN INCHES TOLERANCE ± 1/16		DESCRIPTION: <b>UNIVERSAL SADDLE MOUNT</b>	
MATERIAL: -		DWG NO: TW1126	
FINISH: H.D.G.		DRAWN BY: AJK	
SIZE: <b>B</b>		DATE: 4/13/2022	
PROPRIETARY AND CONFIDENTIAL THE INFORMATION CONTAINED IN THIS DRAWING IS THE SOLE PROPERTY OF PRO TOWER MANUFACTURING L.L.C. ANY REPRODUCTION IN PART OR AS A WHOLE WITHOUT THE WRITTEN PERMISSION OF PRO TOWER MANUFACTURING L.L.C. IS PROHIBITED.		CHECKED BY: E. FILMER	
DATE: 4/13/2022		REV: <b>D</b>	
PRO TOWER MANUFACTURING L.L.C. 5601 San Francisco St. NE Albuquerque, N.M. 87109 (505) 924-2810		SHEET: 2 of 4	
SCALE: NTS		WEIGHT: 113.59	

# UNIVERSAL SADDLE MOUNT CONFIGURATION SHEET FOR CLARITY

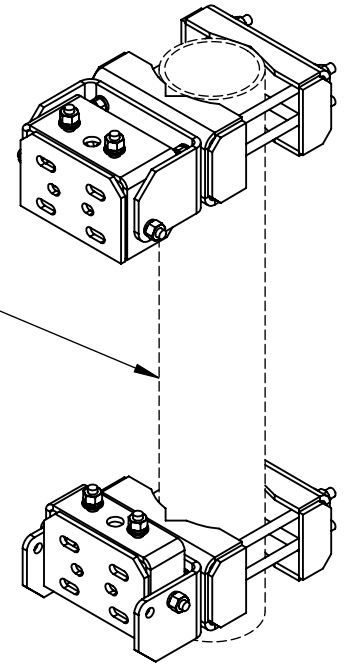


Ø2-1/2" O.D.  
PIPE CONFIGURATION  
SHOWN

( $\frac{9}{16}$ " )



Ø6-5/8" O.D.  
PIPE CONFIGURATION  
SHOWN



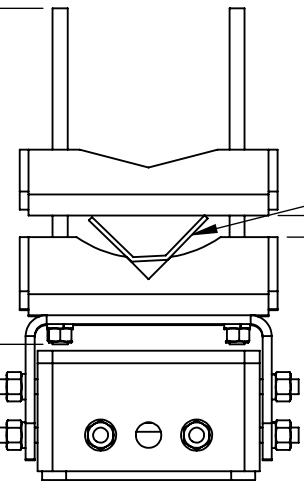
## UNIVERSAL SADDLE MOUNT

FITS:

-ANGLE TOWER LEGS (2-3/4" - 4-1/2")

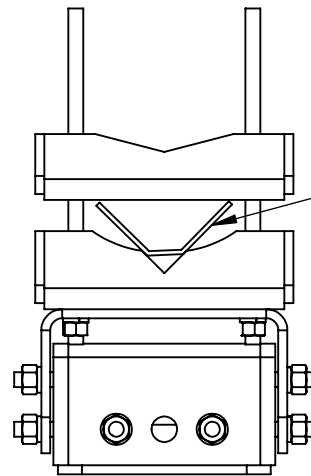
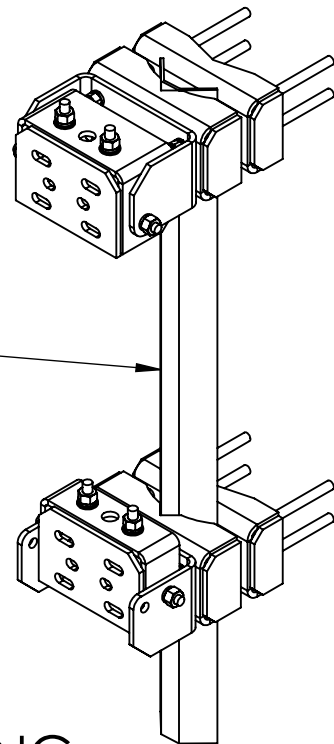
-PIPE TOWER LEGS (Ø1-3/4" - Ø6-5/8" O.D.)

14" TYP.

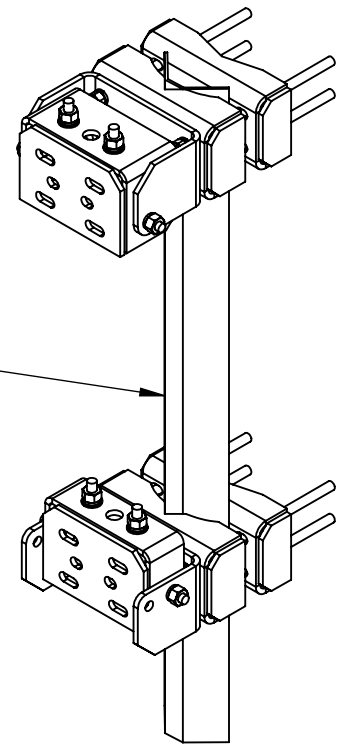


3-1/2" ANGLE LEG  
CONFIGURATION  
SHOWN

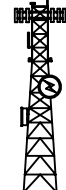
( $\frac{7}{8}$ " )



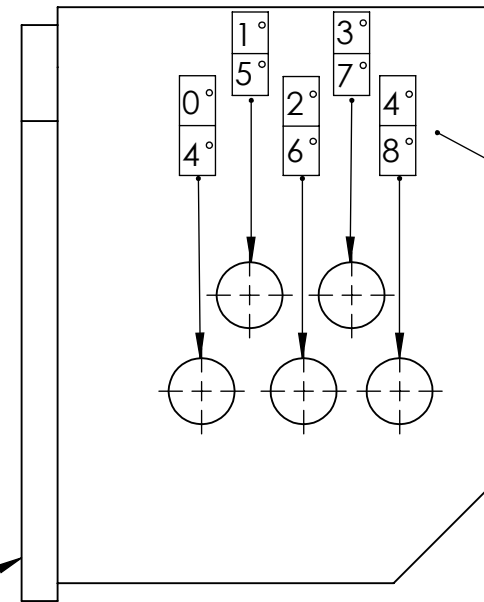
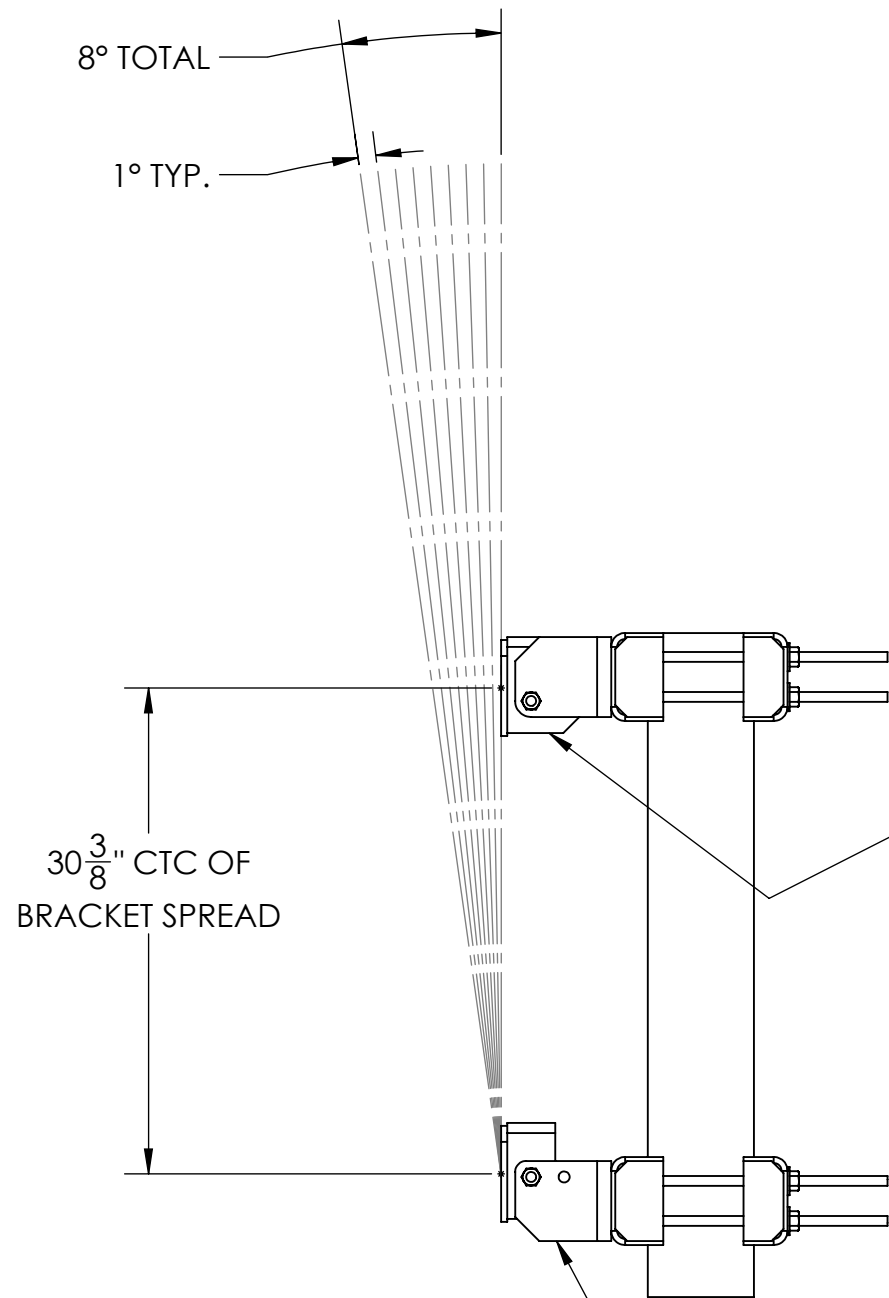
4" ANGLE LEG  
CONFIGURATION  
SHOWN



PLEASE NOTE THAT WHEN MOUNTING TO AN ANGLE TOWER LEG YOU MUST FLIP BOTH "TW1126.5" DETAILS TO ALLOW FOR A FLAT SURFACE TO CLAMP AGAINST THE ANGLE LEGS AS SHOWN.

MATERIAL		UNLESS OTHERWISE SPECIFIED: DIMENSIONS ARE IN INCHES TOLERANCE ± 1/16		DESCRIPTION: UNIVERSAL SADDLE MOUNT	
FINISH H.D.G.		SIZE <b>B</b>	PROPRIETARY AND CONFIDENTIAL THE INFORMATION CONTAINED IN THIS DRAWING IS THE SOLE PROPERTY OF PRO TOWER MANUFACTURING L.L.C. ANY REPRODUCTION IN PART OR AS A WHOLE WITHOUT THE WRITTEN PERMISSION OF PRO TOWER MANUFACTURING L.L.C. IS PROHIBITED.	 <b>PRO TOWER MANUFACTURING L.L.C.</b> 5601 San Francisco St. NE Albuquerque, N.M. 87109 (505) 924-2810	DWG NO: TW1126
					DRAWN BY: AJK CHECKED BY: E. FILMER SHEET: 3 of 4

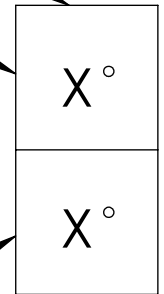
# RANGE OF MOTION SPECIFICATION SHEET



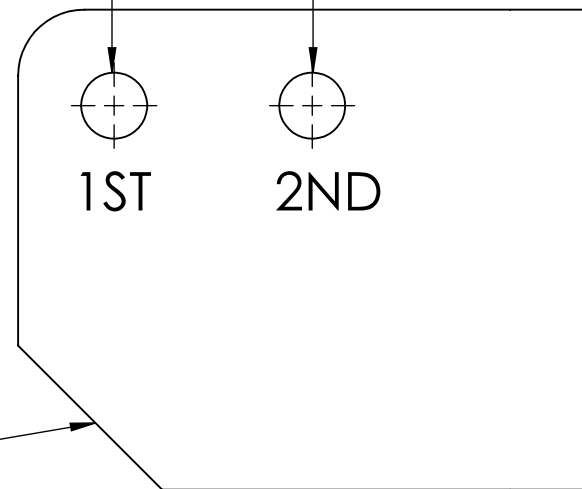
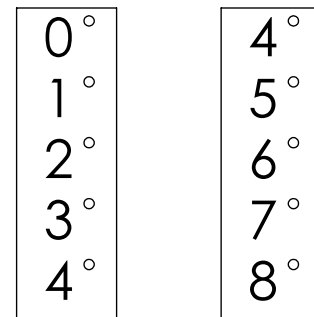
BASED OFF A CENTER TO CENTER OF BRACKET SPREAD OF 30-3/8"

EXAMPLE

1ST HOLE



2ND HOLE

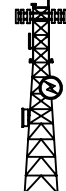


4° CAN BE SET USING EITHER OF THE LOWER TWO HOLES

MATERIAL	-
FINISH	H.D.G.

UNLESS OTHERWISE SPECIFIED:  
DIMENSIONS ARE IN INCHES  
TOLERANCE ± 1/16

PROPRIETARY AND CONFIDENTIAL  
THE INFORMATION CONTAINED IN THIS  
DRAWING IS THE SOLE PROPERTY OF  
PRO TOWER MANUFACTURING L.L.C. ANY  
REPRODUCTION IN PART OR AS A WHOLE  
WITHOUT THE WRITTEN PERMISSION OF  
PRO TOWER MANUFACTURING L.L.C. IS  
PROHIBITED.

DESCRIPTION: UNIVERSAL SADDLE MOUNT RANGE OF MOTION		DWG NO: TW1126	
<b>PRO TOWER MANUFACTURING L.L.C.</b> 5601 San Francisco St. NE Albuquerque, N.M. 87109 (505) 924-2810		DRAWN BY: AJK	DATE: 4/13/2022
		CHECKED BY: E. FILMER	DATE: 4/13/2022
		SHEET: 4 of 4	SCALE: NTS
		REV D	WEIGHT: