

PRO TOWER MANUFACTURING LLC.

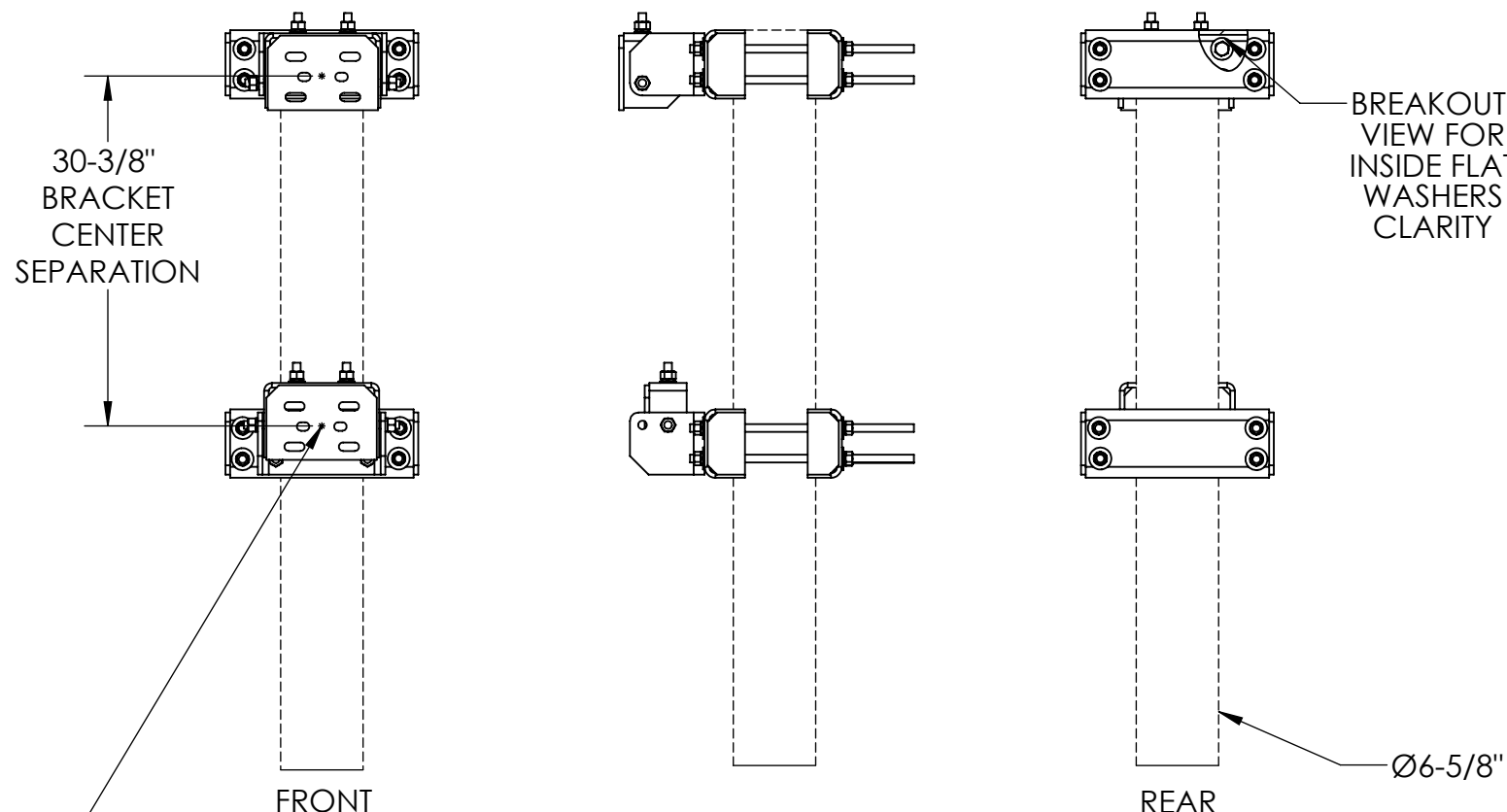
PROJECT DESCRIPTION:
 FABRICATION SHOP PRINTS FOR A
 -TW1128 UNIVERSAL SADDLE MOUNT (LONG LEG ADAPTER KIT)
 FITS:
 -ANGLE TOWER LEGS (3" - 8-1/2" LEGS)
 -PIPE TOWER LEGS (Ø1-3/4" O.D. - Ø12" O.D.)

ALSO CAPABLE OF 8° TILT FORWARD FROM PLUMB WITH THE ABILITY TO SET AT 1° INCREMENTS
 AT A 30-3/8" CENTER TO CENTER OF BRACKET SEPARATION

		UNLESS OTHERWISE SPECIFIED: DIMENSIONS ARE IN INCHES TOLERANCE ± 1/16	DESCRIPTION: UNIVERSAL SADDLE MOUNT (LONG LEG ADAPTER KIT)		
		PROPRIETARY AND CONFIDENTIAL THE INFORMATION CONTAINED IN THIS DRAWING IS THE SOLE PROPERTY OF PRO TOWER MANUFACTURING L.L.C. ANY REPRODUCTION IN PART OR AS A WHOLE WITHOUT THE WRITTEN PERMISSION OF PRO TOWER MANUFACTURING L.L.C. IS PROHIBITED.	PRO TOWER MANUFACTURING L.L.C. 5601 San Francisco St. NE Albuquerque, N.M. 87109 (505) 924-2810	DWG NO: TW1128	
MATERIAL	-			DRAWN BY: AJK	DATE: 4/18/2022
FINISH	-		CHECKED BY: E. FILMER	DATE: 4/18/2022	WEIGHT:
			SHEET: 1 of 4	SCALE: NTS	

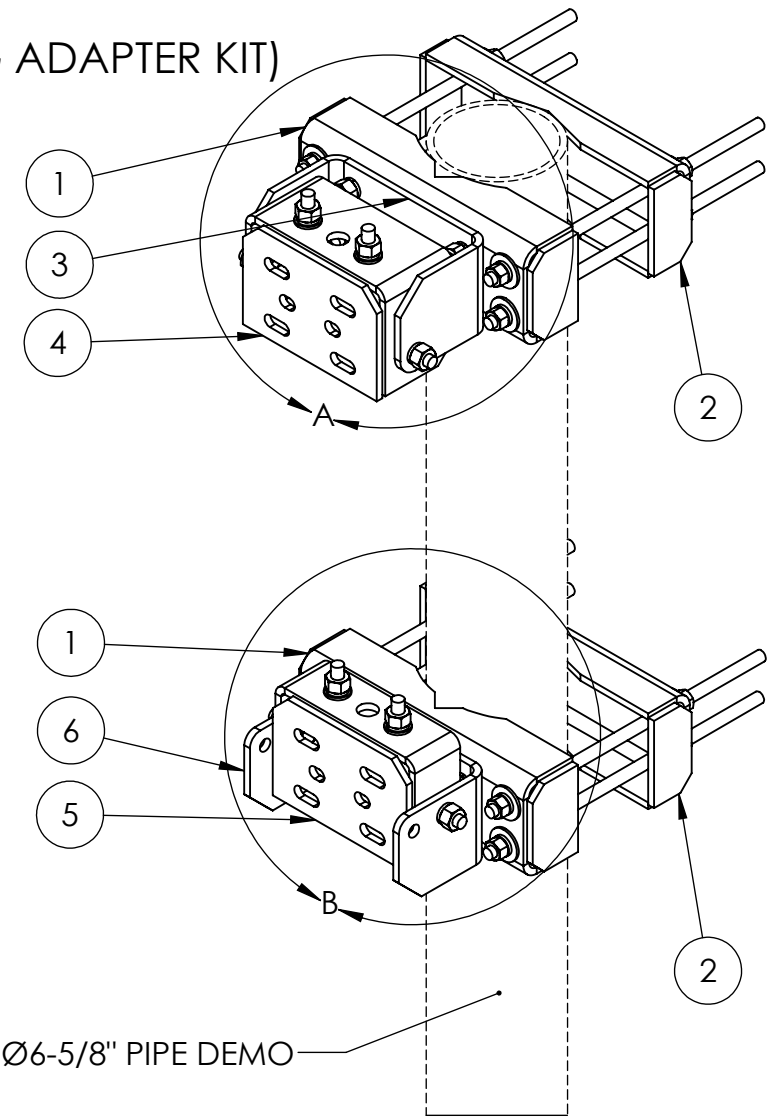
REVISIONS			
REV.	DESCRIPTION	DATE	APPROVED
A	TW1126.3 & TW1126.4 EXISTING SLOT LENGTH DIMENSION INCREASE. SLOT SPREAD DIMENSIONS INCREASED TO INCLUDE ADDITIONAL SLOTS (SEE SHEETS)	12/28/20	E. FILMER
B	TW1126.3 & TW1126.4 FORMED BRACKET PLATE LEGS REDUCED IN SIZE FROM 6-3/8" LG. TO 6" LG. TYP. (SEE SHEETS)	01/04/21	E. FILMER
C	ALL FILLET WELDS CHANGED TO 1/4"	03/18/21	T. SMYTHE
D	BRACE (WELDMNT) FACE PLATES LENGTHENED TO ALLOW FOR EASE OF FABRICATION FIT UP. INCREASED CHAMFER SIZE TO ALLOW GALV. TO RUN OUT WHEN DIPPED	04/13/22	E. FILMER

ITEM NO.	PART NUMBER	DESCRIPTION	FINISH	WEIGHT (PER)	QTY.
1	TW1128.1	TOWER LEG CLAMP (WELDMNT)	H.D.G.	18.39	2
2	TW1128.2	TOWER LEG CLAMP (WELDMNT)	H.D.G.	17.03	2
3	TW1126.2	HINGE BRACE (F.B. 5" x 3/8" x 20-3/4")	H.D.G.	10.62	1
4	TW1126.3	ADJUSTABLE BRACE (WELDMNT)	H.D.G.	13.99	1
5	TW1126.4	LOWER FIXED PIVOT BRACE (WELDMNT)	H.D.G.	11.09	1
6	TW1126.6	HINGE BRACE (F.B. 5" x 3/8" x 20-3/4")	H.D.G.	10.57	1
7	GL05	5/8" LOCK WASHER	H.D.G.	0.03	32
8	GN05A	5/8" HEX NUT (2H)	H.D.G.	0.12	32
9	GB0520A	5/8" x 2" HEX BOLT	H.D.G.	0.28	16
10	GF05A	5/8" FLAT WASHER	H.D.G.	0.08	28
11	GR625.018	5/8" X 18" THREADED ROD	H.D.G.	1.57	8

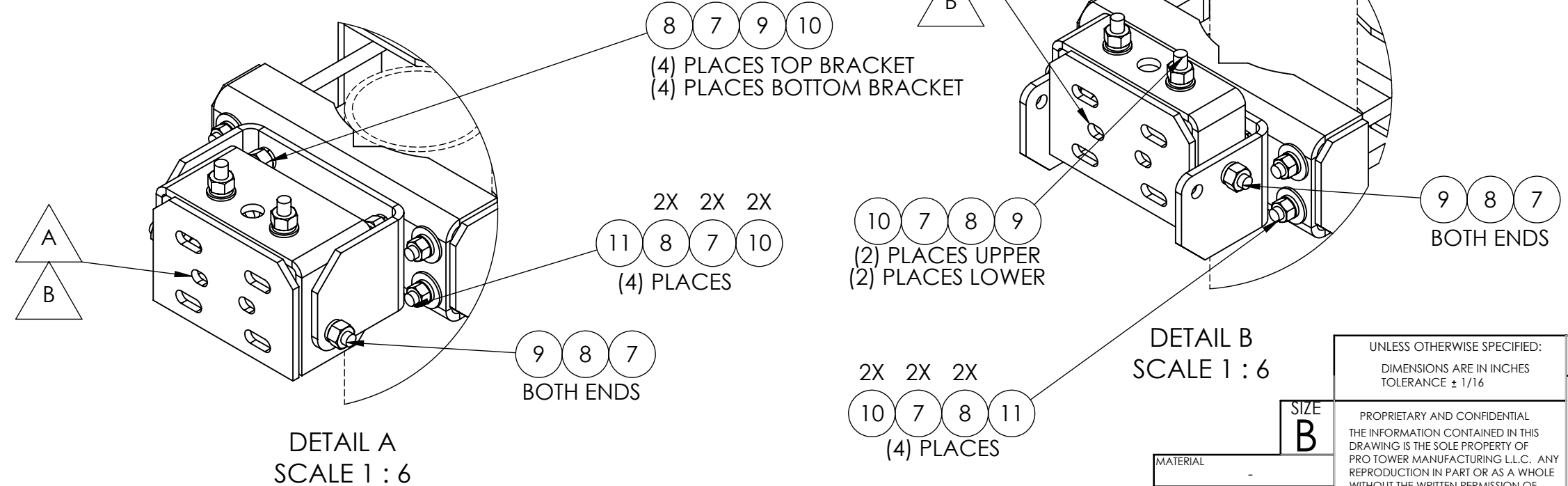


PLEASE SEE SHEET 3 FOR MULTIPLE TOWER LEG CONFIGURATIONS

UNIVERSAL SADDLE MOUNT (LONG LEG ADAPTER KIT)
 FITS:
 -ANGLE TOWER LEGS (3" - 8-1/2" LEGS)
 -PIPE TOWER LEGS (Ø1-3/4" - Ø12" O.D.)

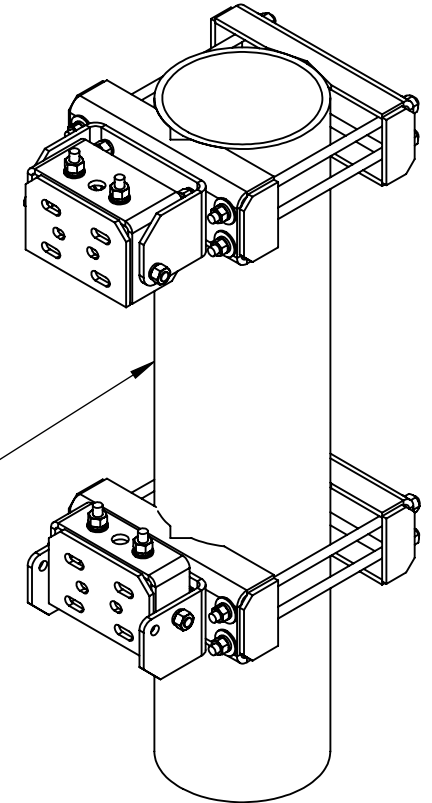
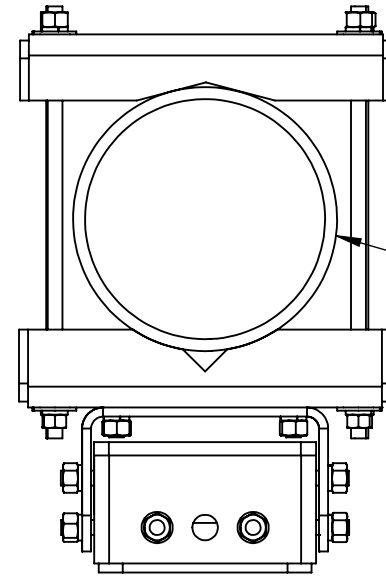
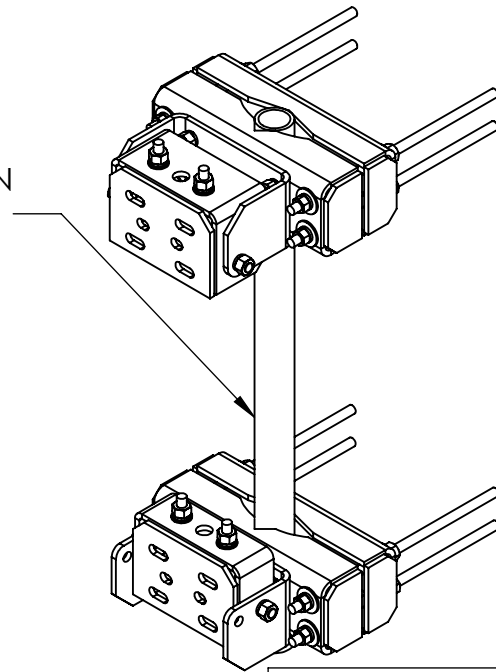
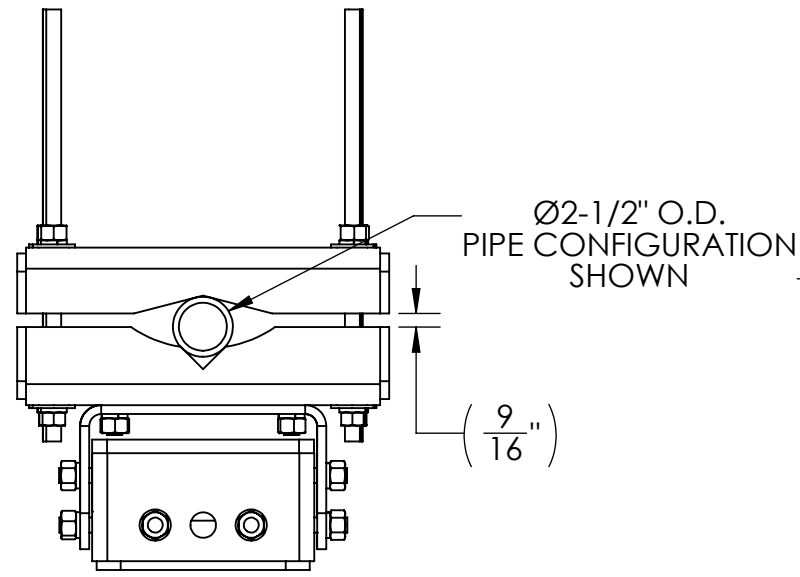


IN ORDER TO ACHIEVE 8° OF TILT FORWARD FROM PLUMB, BRACKETS CENTER SEPARATION MUST BE SET AT 30-3/8" AS SHOWN

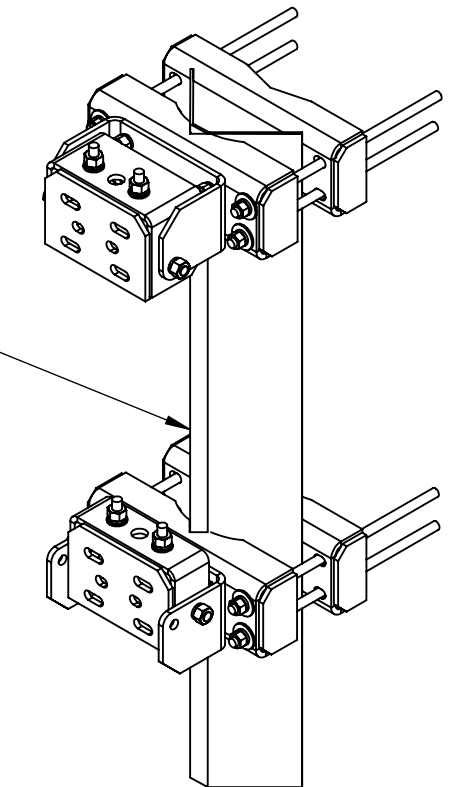
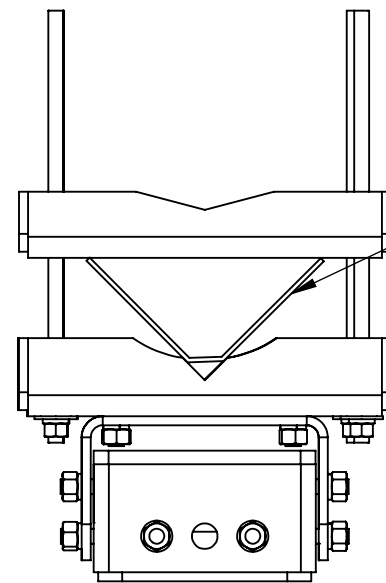
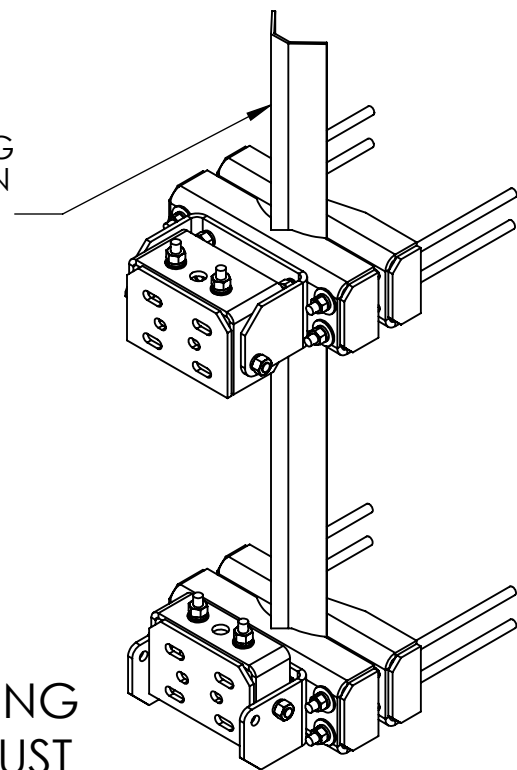
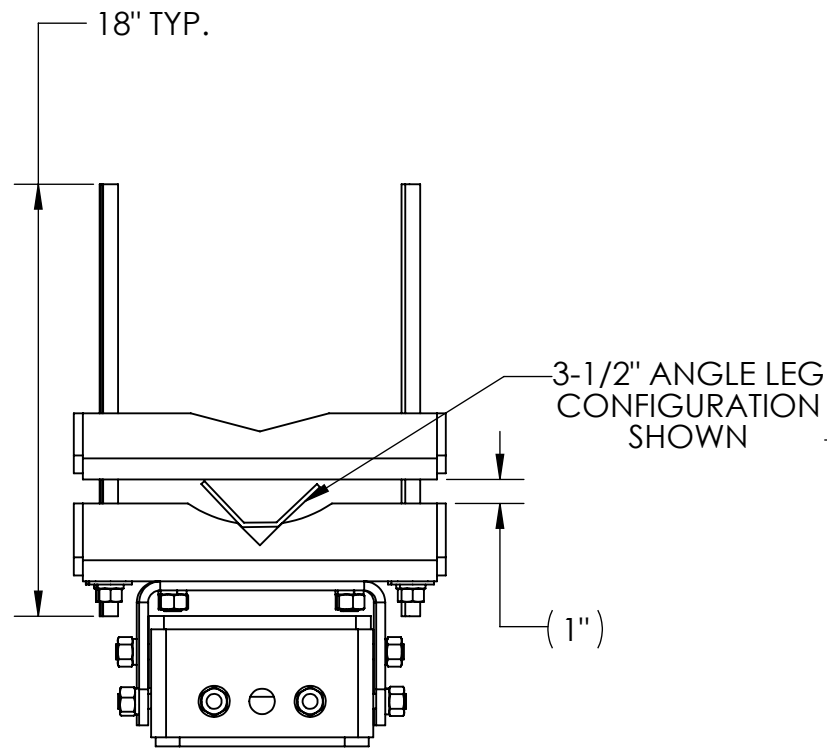


UNLESS OTHERWISE SPECIFIED: DIMENSIONS ARE IN INCHES TOLERANCE ± 1/16		DESCRIPTION: UNIVERSAL SADDLE MOUNT (LONG LEG ADAPTER KIT)	
PROPRIETARY AND CONFIDENTIAL THE INFORMATION CONTAINED IN THIS DRAWING IS THE SOLE PROPERTY OF PRO TOWER MANUFACTURING L.L.C. ANY REPRODUCTION IN PART OR AS A WHOLE WITHOUT THE WRITTEN PERMISSION OF PRO TOWER MANUFACTURING L.L.C. IS PROHIBITED.		PRO TOWER MANUFACTURING L.L.C. 5601 San Francisco St. NE Albuquerque, N.M. 87109 (505) 924-2810	
MATERIAL -	FINISH H.D.G.	DWG NO: TW1128	DRAWN BY: AJK CHECKED BY: E. FILMER SHEET: 2 of 4
SIZE B		DATE: 4/18/2022	REV D
		DATE: 4/18/2022	WEIGHT: 141.19
		SCALE: NTS	

UNIVERSAL SADDLE MOUNT (LONG LEG) CONFIGURATION SHEET FOR CLARITY



UNIVERSAL SADDLE MOUNT (LONG LEG ADAPTER KIT) FITS:
 -ANGLE TOWER LEGS (3" - 8-1/2" LEGS)
 -PIPE TOWER LEGS (Ø1-3/4" - Ø12" O.D.)



PLEASE NOTE THAT WHEN MOUNTING TO AN ANGLE TOWER LEG YOU MUST FLIP BOTH "TW1128.2" DETAILS TO ALLOW FOR A FLAT SURFACE TO CLAMP AGAINST THE ANGLE LEGS AS SHOWN.

MATERIAL	-
FINISH	H.D.G.

SIZE
B

UNLESS OTHERWISE SPECIFIED:
 DIMENSIONS ARE IN INCHES
 TOLERANCE ± 1/16

PROPRIETARY AND CONFIDENTIAL
 THE INFORMATION CONTAINED IN THIS DRAWING IS THE SOLE PROPERTY OF PRO TOWER MANUFACTURING L.L.C. ANY REPRODUCTION IN PART OR AS A WHOLE WITHOUT THE WRITTEN PERMISSION OF PRO TOWER MANUFACTURING L.L.C. IS PROHIBITED.

DESCRIPTION: UNIVERSAL SADDLE MOUNT (LONG LEG ADAPTER KIT)

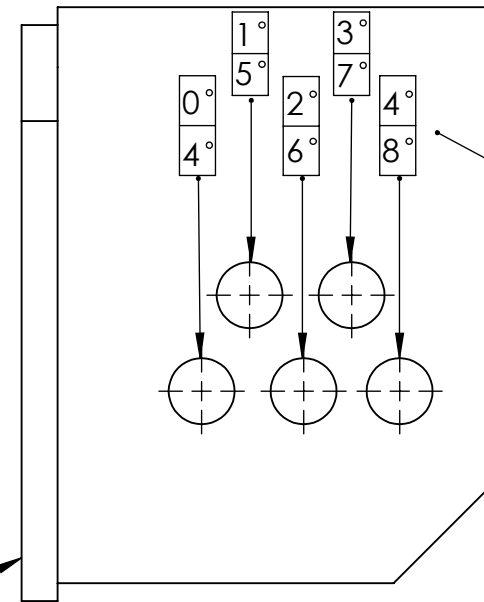
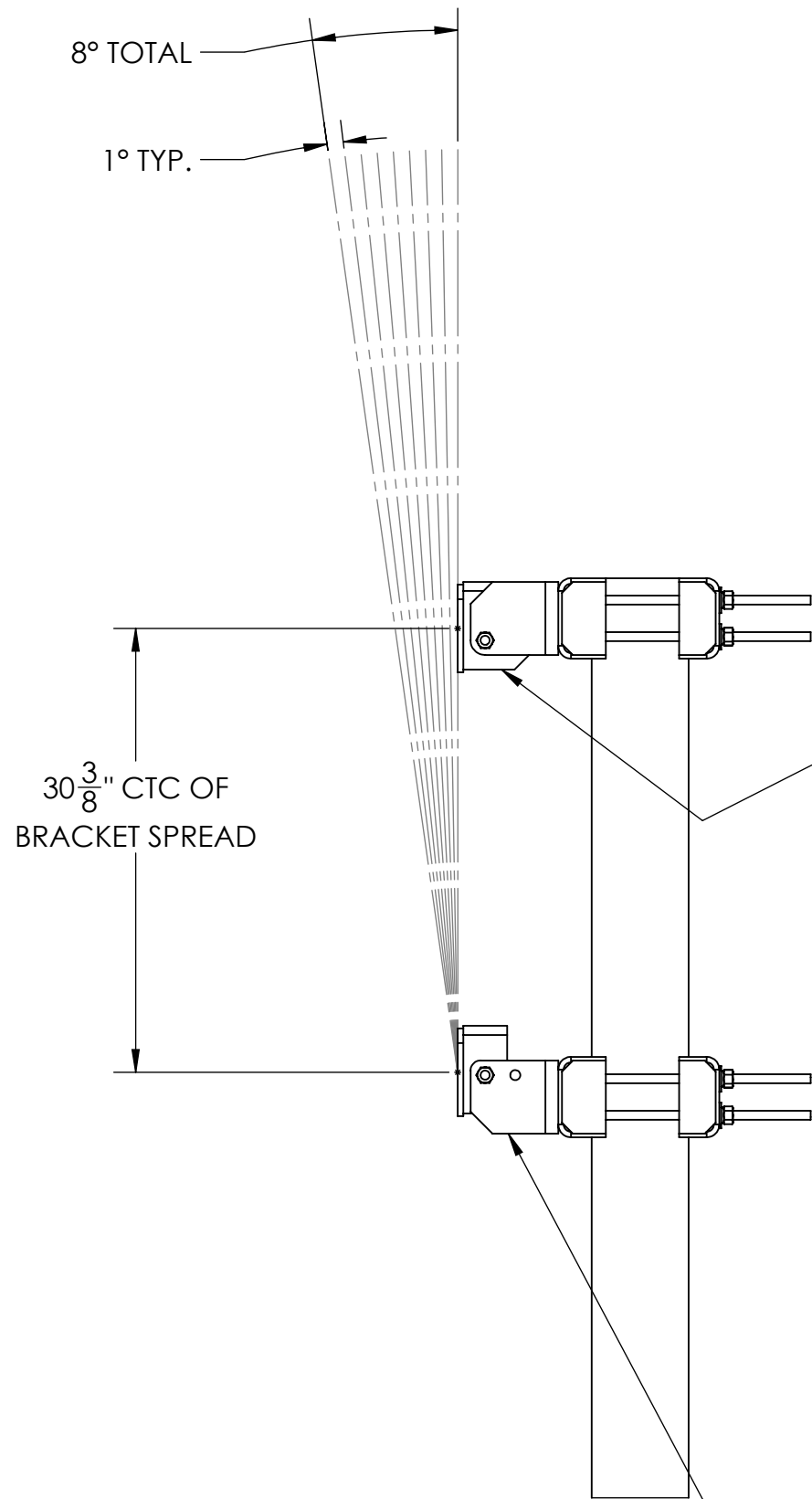


PRO TOWER MANUFACTURING L.L.C.
 5601 San Francisco St. NE
 Albuquerque, N.M. 87109
 (505) 924-2810

DWG NO: TW1128

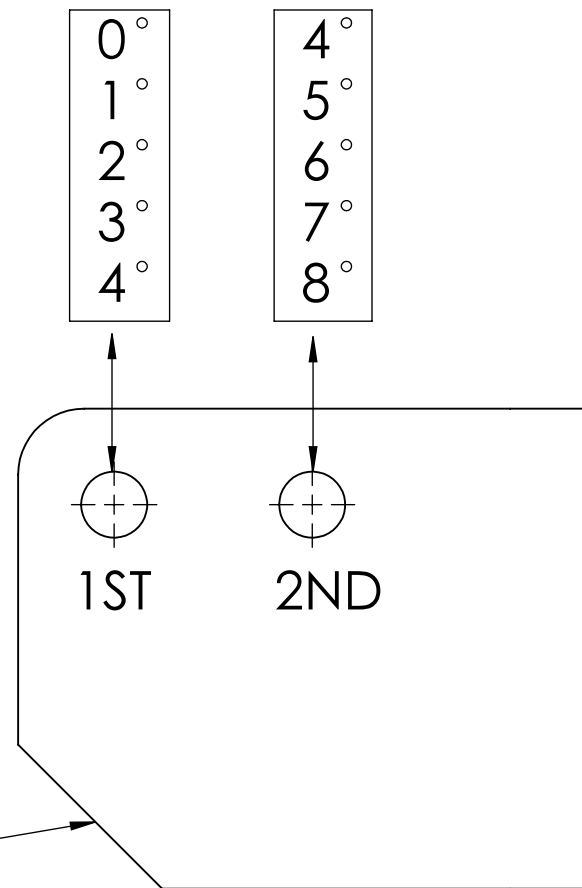
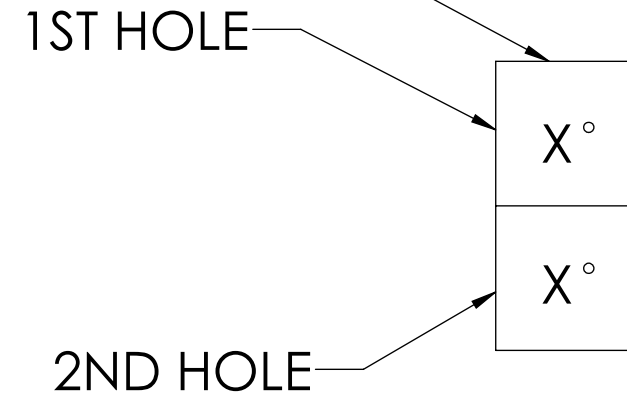
DRAWN BY: AJK	DATE: 4/18/2022	REV D
CHECKED BY: E. FILMER	DATE: 4/18/2022	WEIGHT:
SHEET: 3 of 4	SCALE: NTS	

RANGE OF MOTION SPECIFICATION SHEET



BASED OFF A CENTER TO CENTER OF BRACKET SPREAD OF 30-3/8"

EXAMPLE



4° CAN BE SET USING EITHER OF THE LOWER TWO HOLES

MATERIAL	-
FINISH	H.D.G.

UNLESS OTHERWISE SPECIFIED:
DIMENSIONS ARE IN INCHES
TOLERANCE ± 1/16

PROPRIETARY AND CONFIDENTIAL
THE INFORMATION CONTAINED IN THIS
DRAWING IS THE SOLE PROPERTY OF
PRO TOWER MANUFACTURING L.L.C. ANY
REPRODUCTION IN PART OR AS A WHOLE
WITHOUT THE WRITTEN PERMISSION OF
PRO TOWER MANUFACTURING L.L.C. IS
PROHIBITED.

DESCRIPTION: UNIVERSAL SADDLE MOUNT (LONG LEG ADAPTER KIT)		DWG NO: TW1128	
PRO TOWER MANUFACTURING L.L.C. 5601 San Francisco St. NE Albuquerque, N.M. 87109 (505) 924-2810		DRAWN BY: AJK	DATE: 4/18/2022
CHECKED BY: E. FILMER SHEET: 4 of 4		DATE: 4/18/2022	REV D
		SCALE: NTS	WEIGHT: