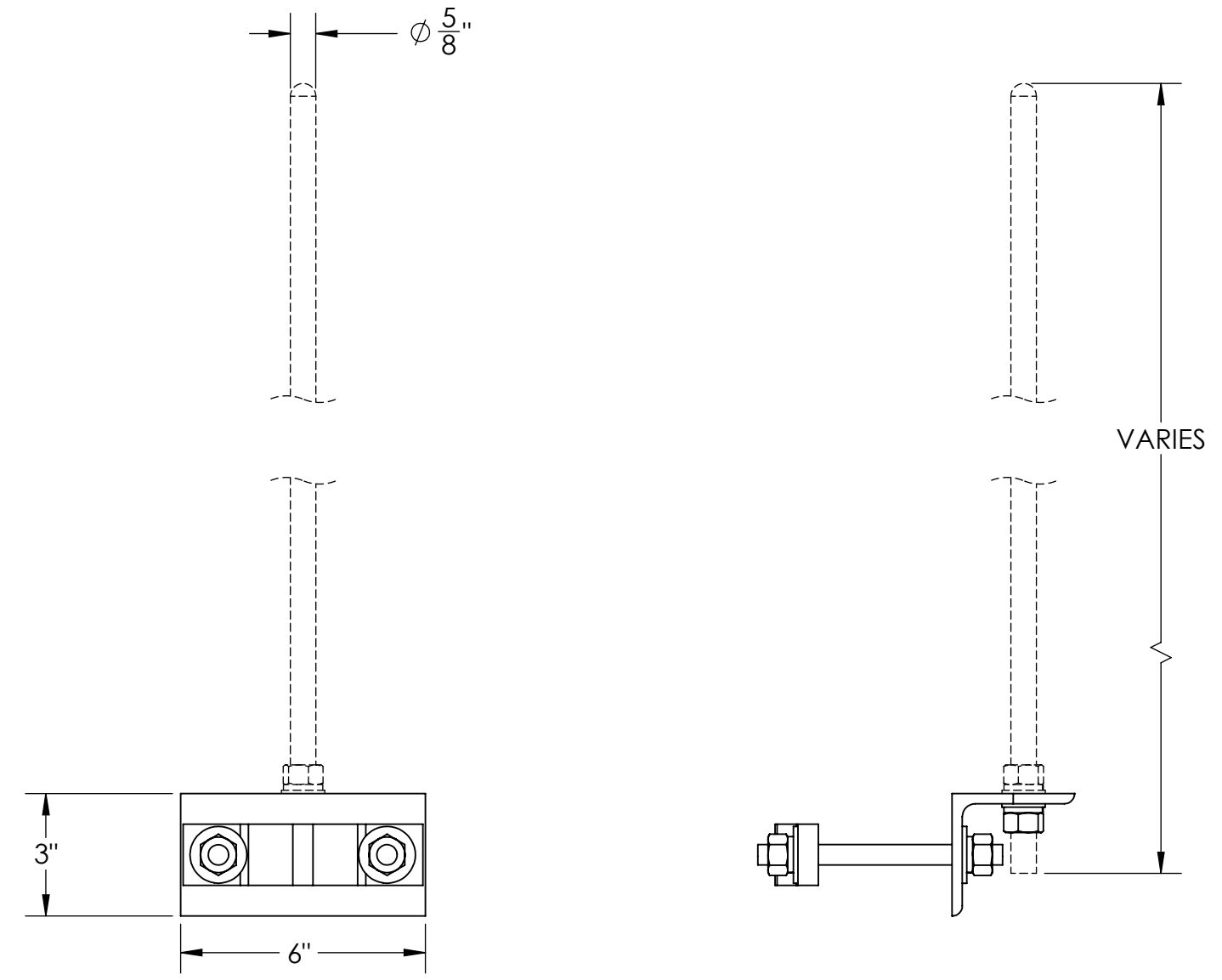
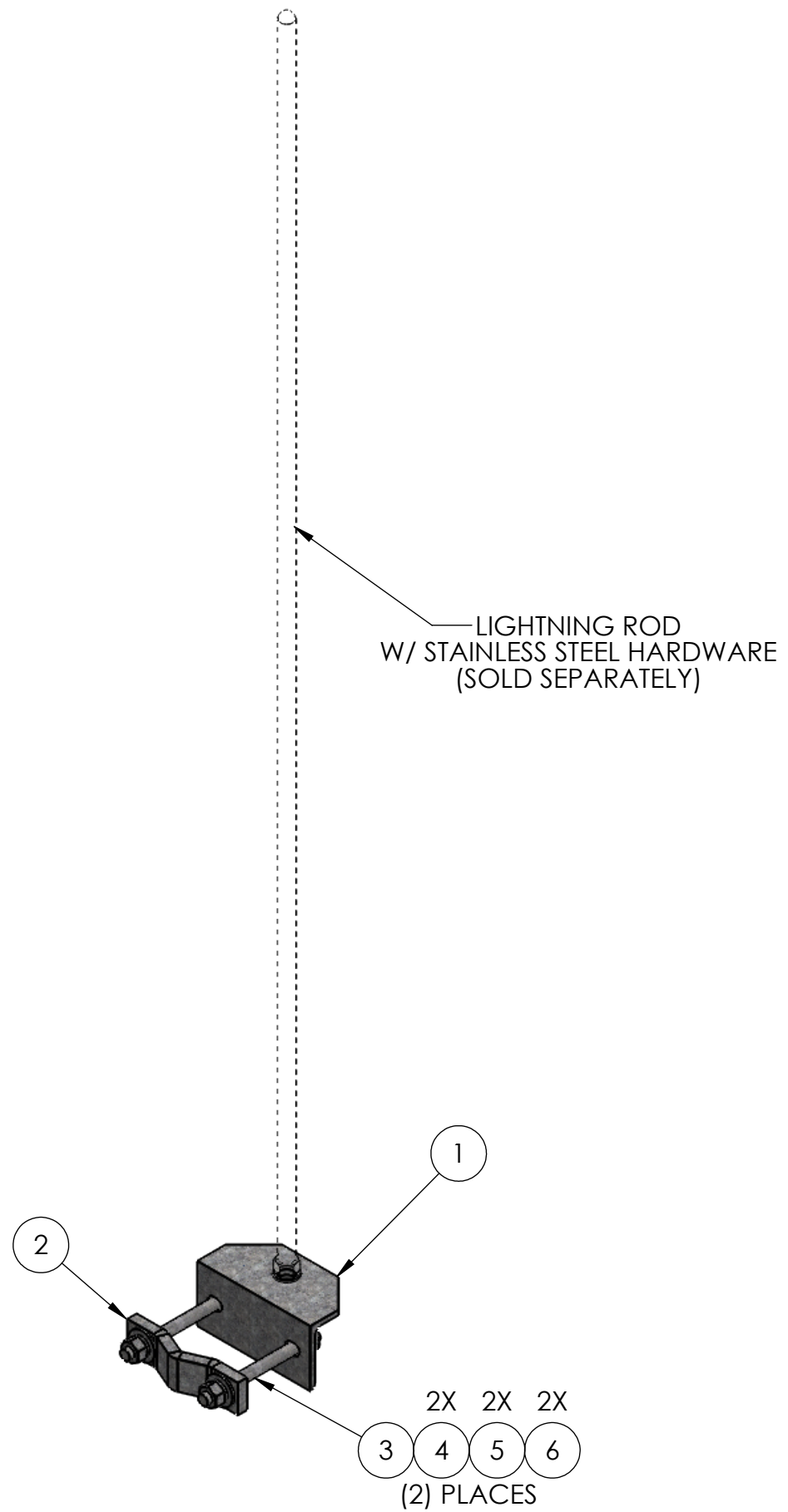


ITEM NO.	PART NUMBER	DESCRIPTION	FINISH	WEIGHT (PER)	QTY.
1	GA3.250	L3" x 3" x 1/4" x 6"	H.D.G.	2.22	1
2	TW1320.01	CLAMP HALF 1-1/2" TO 3-1/2" OD ROUND (1/2" PLATE)	H.D.G.	1.20	1
3	GR500.006	1/2" x 6" THREADED ROD	H.D.G.	0.33	2
4	GF04	1/2" FLAT WASHER	H.D.G.	0.04	4
5	GL04	1/2" LOCK WASHER	H.D.G.	0.02	4
6	GN04A	1/2" HEX NUT (2H)	H.D.G.	0.06	4



UNLESS OTHERWISE SPECIFIED: DIMENSIONS ARE IN INCHES TOLERANCE $\pm 1/16$		DESCRIPTION: LIGHTNING ROD ASSEMBLY KIT		
MATERIAL -		 PRO TOWER MANUFACTURING L.L.C. 5601 San Francisco St. NE Albuquerque, N.M. 87109 (505) 924-2810	DWG NO: LRMA	
FINISH H.D.G.			DRAWN BY: AJK CHECKED BY: E.FILMER SHEET: 1 of 1	DATE: 8/24/2022 DATE: 8/24/2022 SCALE: NTS
SIZE B PROPRIETARY AND CONFIDENTIAL THE INFORMATION CONTAINED IN THIS DRAWING IS THE SOLE PROPERTY OF PRO TOWER MANUFACTURING L.L.C. ANY REPRODUCTION IN PART OR AS A WHOLE WITHOUT THE WRITTEN PERMISSION OF PRO TOWER MANUFACTURING L.L.C. IS PROHIBITED.		REV WEIGHT: 4.56		